



**Australian
Bureau of
Statistics**

**February 1994
Labour Force
South Australia**

Catalogue No. 6201.4



EMBARGOED UNTIL 11.00 A.M. 26 APRIL 1994

LABOUR FORCE
SOUTH AUSTRALIA
FEBRUARY 1994

(Including an appendix containing revised seasonally adjusted and trend estimates
for January 1989 to February 1994)

P.M. GARDNER
Deputy Commonwealth Statistician
and Government Statist

© Commonwealth of Australia 1994

CONTENTS

<i>Table</i>		<i>Page</i>
..	Main Features	1
SOUTH AUSTRALIA		
1	Labour force status of the civilian population aged 15 years and over	2
Civilian labour force:		
2	Seasonally adjusted and trend series	4
3	Age group	6
4	Participation rates by age group	7
Employed persons:		
5	Full-time and part-time status by age group	8
6	Status of worker	11
7	Occupation	11
8	Industry	12
9	Average weekly hours worked by industry	13
Unemployed persons:		
10	Age group	14
11	Unemployment rates by age group	15
12	Duration of unemployment by selected characteristics, August 1993	16
13	Duration of unemployment	17
14	Number and rate by birthplace	18

INQUIRIES

- *for more information about these statistics, and the availability of related unpublished statistics, contact Brian Moody on Adelaide (08) 237 7315.*
- *for information about other ABS statistics and services please contact Information Services on Adelaide (08) 237 7100, call at 55 Currie Street, Adelaide, or write to Information Services, ABS, GPO Box 2272, Adelaide SA 5001.*

CONTENTS – continued

<i>Table</i>		<i>Page</i>
	REGIONS OF SOUTH AUSTRALIA	
15	Labour force status of the civilian population aged 15 years and over:	
	Adelaide Statistical Division;	19
	Northern Adelaide	21
	Western Adelaide	22
	Eastern Adelaide	23
	Southern Adelaide	24
	Balance of South Australia (excludes Adelaide Statistical Division);	25
	Northern and Western South Australia	26
	Southern and Eastern South Australia	27
	Employed persons:	
16	Occupation	28
17	Industry	30
..	Explanatory Notes	33
..	Recently released labour statistics publication	36
..	Technical Notes	37
..	Glossary	40
..	Early Release of Final Labour Force Estimates	42
..	Labour Force Supplementary and Special Surveys	42
	APPENDIX : REVISED MONTHLY LABOUR FORCE SURVEY ESTIMATES	
	Civilian Labour Force: original, seasonally adjusted and trend series, January 1989 to February 1994:	
A1	Males	43
A2	Females	45
A3	Persons	47
..	MAPS OF STATISTICAL REGIONS	49

AVAILABILITY OF UNPUBLISHED STATISTICS

The ABS offers a range of unpublished statistics from the Labour Force Survey. This information may be made available in the following forms: computer printout, microfiche, or on floppy disk. Generally, a charge is made for providing unpublished statistics.

Any queries regarding the availability of unpublished statistics should be directed to Information Services on (08) 237 7100.

MAIN FEATURES

NOTE:

1. **REVISED DATA:** In this and future issues all data published are based on population estimates obtained from the 1991 Census of Population and Housing. Small revisions have therefore been made to many of the estimates from January 1989 to January 1994. Seasonally adjusted and trend estimates have also been revised as a result of the revisions to original estimates and the annual reanalysis of seasonal factors.

2. Care should be taken in the interpretation of month to month movements in the original and seasonally adjusted data - see Paragraphs 28 and 29 of the Explanatory Notes. Readers are advised that the last six months' trend estimates are provisional, and could change when data for future months are available - see paragraphs 30 to 32 for further details.

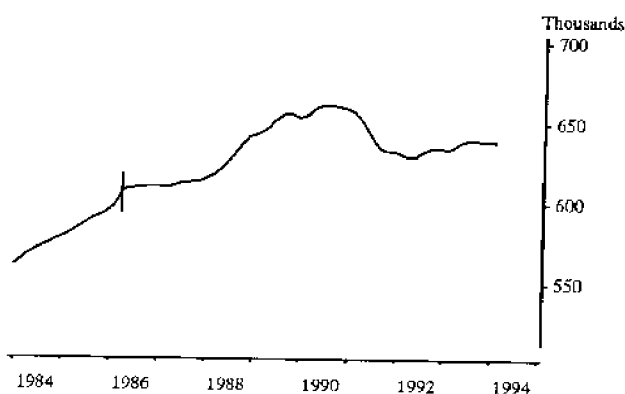
Regions of South Australia

- In original terms, the number of employed persons in the Adelaide Statistical Division in February 1994 was 464,000. Within the Balance of South Australia, there were 167,900 employed persons. Neither region experienced a significant shift in employment over the past 12 months.
- Within the Adelaide Statistical Division in February 1994, Western Adelaide recorded the highest unemployment rate of 16.1 per cent, followed by Northern Adelaide (13.1 per cent) and Southern Adelaide (11.1 per cent). Eastern Adelaide recorded the lowest unemployment rate of 9.6 per cent.
- Northern Adelaide recorded the highest labour force participation rate of 63.4 per cent and Western Adelaide the lowest, with 55.4 per cent.

Trend Series

- The trend estimate of employed persons in South Australia increased from 630,600 in February 1993 to 636,200 in August 1993, but has since gradually decreased to 635,100 in February 1994.

EMPLOYED PERSONS: TREND SERIES

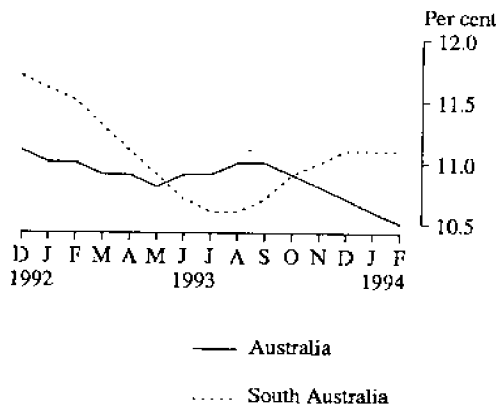


Indicates a change in definition - see paragraphs 15 and 16 of the Explanatory Notes for further details.

- Between February and July 1993 the trend estimate of the labour force decreased slightly from 712,600 to 711,500. It increased in each subsequent month to 714,400 in January 1994 and stood at 714,200 in February 1994.

- From February 1993, the trend estimate of unemployed persons fell from 82,000 to 75,400 in July 1993 and then gradually rose to 79,100 in January 1994 and now stands at 79,000. Over the same period, the trend unemployment rate fell from 11.5 per cent to 10.6 in July and August 1993 and rose to 11.1 in February 1994. The national rate has been falling since September 1993 and in February 1994 was 10.5 per cent.

UNEMPLOYMENT RATES
TREND ESTIMATES



Seasonally adjusted estimates

- The seasonally adjusted estimate of employed persons in February 1994 was 631,400, compared with 634,000 in February 1993. The estimate of employed males was 359,800 in February 1994 (363,000 in February 1993) while the number of employed females was 271,600 (271,100 in February 1993)
- The seasonally adjusted estimate for February 1994 of the number of unemployed persons was 75,900.
- The unemployment rates were 10.7 per cent for all persons, 11.5 for males and 9.7 for females.

Full-time and part-time employment

- In original terms, there were 631,900 employed persons in February 1994, compared with 634,500 in February 1993. There were 471,400 persons employed full-time in February 1994.
- The number of males and females employed full-time has not changed significantly over the past twelve months, currently standing at 322,200 and 149,200 respectively. Similarly there has been little change in part-time employment, which at February 1994 was 37,400 males and 123,100 females.

TABLE 1 — LABOUR FORCE STATUS OF THE CIVILIAN POPULATION AGED 15 YEARS AND OVER
SOUTH AUSTRALIA

Month	Employed		Unemployed			Labour force '000	Not in labour force '000	Civilian population 15 years & over '000	Unemployment rate per cent	Participation rate per cent
	Full-time workers '000	Total '000	Looking for		Total '000					
			Full-time work '000	Part-time work '000						
MALES										
Feb. 1987	338.2	359.9	36.0	3.4	39.4	399.3	136.4	535.7	9.9	74.5
Feb. 1988	331.2	360.4	35.1	*1.9	37.0	397.4	146.0	543.4	9.3	73.1
Feb. 1989	347.9	377.2	31.0	2.2	33.2	410.5	136.7	547.2	8.1	75.0
Feb. 1990	351.2	380.9	29.1	2.6	31.7	412.7	140.6	553.2	7.7	74.6
Feb. 1991	346.3	378.8	39.0	3.7	42.7	421.5	137.5	559.0	10.1	75.4
Feb. 1992	322.7	359.7	52.2	4.5	56.7	416.4	148.3	564.6	13.6	73.7
1992 —										
Dec.	326.1	362.6	50.0	4.8	54.8	417.4	149.9	567.3	13.1	73.6
1993 —										
Jan.	320.0	357.3	52.3	5.7	58.0	415.3	152.3	567.6	14.0	73.2
Feb.	322.6	362.8	46.8	5.9	52.7	415.4	152.4	567.8	12.7	73.2
Mar.	320.6	362.2	46.0	4.7	50.7	412.9	155.1	568.0	12.3	72.7
Apr.	318.2	361.0	46.9	4.1	51.0	412.0	156.3	568.3	12.4	72.5
May	326.4	366.7	44.2	4.3	48.5	415.2	153.3	568.5	11.7	73.0
June	325.2	362.0	45.9	2.7	48.6	410.6	158.2	568.8	11.8	72.2
July	322.5	359.5	45.0	2.7	47.7	407.2	161.8	569.0	11.7	71.6
Aug.	316.9	360.4	41.3	2.7	44.0	404.4	164.9	569.3	10.9	71.0
Sept.	318.1	360.7	44.1	3.3	47.4	408.0	161.5	569.5	11.6	71.6
Oct.	321.7	361.2	45.5	3.2	48.7	409.9	159.9	569.9	11.9	71.9
Nov.	320.4	362.7	43.3	4.2	47.5	410.2	160.0	570.2	11.6	71.9
Dec.	326.1	367.8	44.7	3.6	48.3	416.1	154.4	570.5	11.6	72.9
1994 —										
Jan.	320.5	361.3	50.9	3.2	54.1	415.4	155.4	570.8	13.0	72.8
Feb.	322.2	359.6	46.0	4.0	50.1	409.6	161.5	571.1	12.2	71.7
MARRIED FEMALES										
Feb. 1987	73.3	154.7	6.4	4.6	11.0	165.7	171.2	337.0	6.6	49.2
Feb. 1988	74.3	159.1	6.2	3.7	9.9	169.0	165.0	334.0	5.9	50.6
Feb. 1989	77.2	163.9	6.3	4.7	10.9	174.8	169.7	344.5	6.3	50.7
Feb. 1990	87.7	174.6	6.5	4.6	11.1	185.7	162.4	348.1	6.0	53.3
Feb. 1991	85.5	175.7	7.5	4.6	12.1	187.9	160.2	348.1	6.5	54.0
Feb. 1992	87.0	171.9	7.8	5.1	12.9	184.8	169.1	353.9	7.0	52.2
1992 —										
Dec.	83.3	169.9	8.2	3.4	11.5	181.5	164.5	345.9	6.4	52.5
1993 —										
Jan.	84.3	166.9	9.0	4.4	13.5	180.4	168.6	349.0	7.5	51.7
Feb.	85.3	174.2	8.8	4.8	13.6	187.9	161.5	349.4	7.3	53.8
Mar.	83.2	173.1	9.0	3.7	12.7	185.8	163.2	349.0	6.8	53.2
Apr.	82.4	172.8	7.2	4.4	11.6	184.4	165.2	349.6	6.3	52.7
May	85.5	174.9	5.6	4.4	9.9	184.8	164.5	349.4	5.4	52.9
June	87.4	176.4	6.4	3.6	10.0	186.3	162.1	348.4	5.4	53.5
July	88.3	176.8	6.1	3.4	9.5	186.2	159.4	345.6	5.1	53.9
Aug.	89.0	176.5	6.0	4.1	10.1	186.6	157.8	344.3	5.4	54.2
Sept.	87.7	179.0	6.4	3.9	10.3	189.3	153.0	342.3	5.4	55.3
Oct.	85.5	174.9	6.9	5.2	12.1	187.0	157.7	344.7	6.5	54.3
Nov.	85.1	177.2	6.9	4.2	11.1	188.3	157.9	346.2	5.9	54.4
Dec.	90.2	180.2	7.5	3.8	11.3	191.4	158.8	350.2	5.9	54.7
1994 —										
Jan.	87.7	174.9	6.1	4.0	10.1	185.0	164.6	349.6	5.5	52.9
Feb.	89.3	176.7	8.9	4.4	13.3	190.0	161.6	351.6	7.0	54.0

TABLE 1 — LABOUR FORCE STATUS OF THE CIVILIAN POPULATION AGED 15 YEARS AND OVER
SOUTH AUSTRALIA—continued

Month	Employed		Unemployed			Labour force '000	Not in labour force '000	Civilian population 15 years & over '000	Unemployment rate per cent	Participation rate per cent
	Full- time workers '000	Total '000	Looking for		Total '000					
			Full-time work '000	Part-time work '000						
ALL FEMALES										
Feb. 1987	138.1	243.8	17.6	8.5	26.1	269.9	283.4	553.2	9.7	48.8
Feb. 1988	138.0	249.2	21.0	8.1	29.1	278.3	282.8	561.1	10.5	49.6
Feb. 1989	143.8	262.4	17.7	8.7	26.4	288.9	278.9	567.8	9.1	50.9
Feb. 1990	150.8	270.1	18.6	7.7	26.3	296.4	277.9	574.3	8.9	51.6
Feb. 1991	150.7	275.1	20.0	8.0	28.0	303.1	277.5	580.7	9.2	52.2
Feb. 1992	147.0	266.0	23.3	9.4	32.7	298.7	287.4	586.1	10.9	51.0
1992 —										
Dec.	145.8	271.1	24.6	7.8	32.4	303.5	285.2	588.8	10.7	51.6
1993 —										
Jan.	146.8	266.8	24.0	8.8	32.8	299.6	289.4	589.0	10.9	50.9
Feb.	145.0	271.7	25.6	9.3	34.9	306.6	282.6	589.2	11.4	52.0
Mar.	142.4	272.1	23.8	7.3	31.1	303.2	286.3	589.5	10.3	51.4
Apr.	140.1	270.0	20.2	8.7	28.9	298.9	290.8	589.7	9.7	50.7
May	144.1	271.3	18.2	8.0	26.1	297.4	292.6	590.0	8.8	50.4
June	147.9	273.9	18.3	7.1	25.3	299.3	290.9	590.2	8.5	50.7
July	149.1	276.3	18.0	7.0	25.0	301.3	289.2	590.5	8.3	51.0
Aug.	145.5	269.9	18.2	7.8	26.0	295.9	294.8	590.7	8.8	50.1
Sept.	148.3	275.1	19.0	8.4	27.4	302.5	288.5	591.0	9.1	51.2
Oct.	144.2	269.7	19.7	10.1	29.8	299.5	291.8	591.3	10.0	50.7
Nov.	145.9	273.7	20.0	8.9	28.9	302.6	289.0	591.6	9.5	51.2
Dec.	153.1	279.0	22.1	9.7	31.8	310.9	281.0	591.9	10.2	52.5
1994 —										
Jan.	145.8	268.3	23.7	10.0	33.7	302.0	290.2	592.2	11.1	51.0
Feb.	149.2	272.3	23.7	9.8	33.6	305.9	286.6	592.4	11.0	51.6
PERSONS										
Feb. 1987	476.4	603.7	53.6	11.9	65.5	669.2	419.8	1,089.0	9.8	61.5
Feb. 1988	469.2	609.6	56.1	10.0	66.1	675.7	428.8	1,104.5	9.8	61.2
Feb. 1989	491.8	639.7	48.7	10.9	59.7	699.3	415.6	1,115.0	8.5	62.7
Feb. 1990	502.0	651.0	47.7	10.3	58.1	709.1	418.4	1,127.5	8.2	62.9
Feb. 1991	497.1	654.0	59.1	11.6	70.7	724.7	415.0	1,139.7	9.8	63.6
Feb. 1992	469.7	625.7	75.5	13.8	89.4	715.1	435.7	1,150.8	12.5	62.1
1992 —										
Dec.	471.9	633.7	74.6	12.6	87.2	720.9	435.1	1,156.1	12.1	62.4
1993 —										
Jan.	466.8	624.1	76.3	14.5	90.8	714.9	441.7	1,156.6	12.7	61.8
Feb.	467.6	634.5	72.3	15.2	87.6	722.1	435.0	1,157.0	12.1	62.4
Mar.	463.0	634.3	69.7	12.0	81.8	716.1	441.4	1,157.5	11.4	61.9
Apr.	458.2	631.0	67.0	12.8	79.9	710.9	447.1	1,158.0	11.2	61.4
May	470.6	638.0	62.3	12.3	74.6	712.6	445.9	1,158.5	10.5	61.5
June	473.1	636.0	64.1	9.8	73.9	709.9	449.1	1,159.0	10.4	61.2
July	471.6	635.8	63.0	9.7	72.7	708.5	451.0	1,159.5	10.3	61.1
Aug.	462.5	630.3	59.6	10.5	70.0	700.3	459.7	1,160.0	10.0	60.4
Sept.	466.3	635.8	63.1	11.7	74.8	710.5	450.0	1,160.5	10.5	61.2
Oct.	465.9	630.9	65.2	13.3	78.6	709.4	451.7	1,161.2	11.1	61.1
Nov.	466.2	636.4	63.3	13.1	76.4	712.8	448.9	1,161.8	10.7	61.4
Dec.	479.2	646.9	66.8	13.3	80.1	727.0	435.4	1,162.4	11.0	62.5
1994 —										
Jan.	466.3	629.6	74.5	13.2	87.8	717.4	445.6	1,163.0	12.2	61.7
Feb.	471.4	631.9	69.8	13.9	83.6	715.5	448.0	1,163.6	11.7	61.5

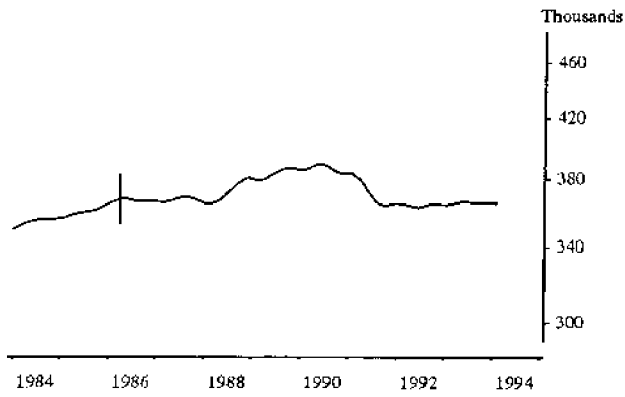
TABLE 2 — CIVILIAN LABOUR FORCE : SEASONALLY ADJUSTED AND TREND SERIES (a), SOUTH AUSTRALIA

Month	Employed		Unemployed		Labour force		Unemployment rate		Participation rate	
	Seasonally adjusted	Trend	Seasonally adjusted	Trend	Seasonally adjusted	Trend	Seasonally adjusted	Trend	Seasonally adjusted	Trend
	'000	'000	'000	'000	'000	'000	per cent	per cent	per cent	per cent
MALES										
1992 —										
Dec.	359.0	361.1	54.1	52.1	413.1	413.2	13.1	12.6	72.8	72.8
1993 —										
Jan.	358.6	360.9	52.6	52.0	411.1	412.9	12.8	12.6	72.4	72.7
Feb.	363.0	360.9	49.0	51.9	412.0	412.8	11.9	12.6	72.6	72.7
Mar.	360.0	361.3	52.3	51.5	412.3	412.8	12.7	12.5	72.6	72.7
Apr.	360.5	362.0	51.9	50.7	412.4	412.8	12.6	12.3	72.6	72.6
May	366.7	362.6	49.1	49.8	415.9	412.4	11.8	12.1	73.1	72.5
June	362.0	362.8	50.7	48.9	412.7	411.7	12.3	11.9	72.6	72.4
July	360.7	362.6	47.9	48.1	408.5	410.7	11.7	11.7	71.8	72.2
Aug.	364.6	362.3	44.6	47.7	409.2	410.1	10.9	11.6	71.9	72.0
Sept.	360.8	362.2	47.1	47.8	408.0	410.0	11.6	11.7	71.6	72.0
Oct.	360.8	362.1	50.2	48.2	411.1	410.3	12.2	11.7	72.1	72.0
Nov.	362.4	362.2	49.7	48.4	412.1	410.7	12.0	11.8	72.3	72.0
Dec.	364.2	362.2	47.7	48.5	411.9	410.7	11.6	11.8	72.2	72.0
1994 —										
Jan.	362.5	362.0	49.1	48.5	411.7	410.5	11.9	11.8	72.1	71.9
Feb.	359.8	361.7	46.6	48.3	406.4	410.0	11.5	11.8	71.2	71.8
FEMALES										
1992 —										
Dec.	268.6	269.9	31.4	31.5	300.0	301.4	10.5	10.5	51.0	51.2
1993 —										
Jan.	271.8	269.7	30.4	31.0	302.2	300.7	10.1	10.3	51.3	51.1
Feb.	271.1	269.7	30.4	30.2	301.5	299.8	10.1	10.1	51.2	50.9
Mar.	268.8	270.0	29.8	29.2	298.6	299.3	10.0	9.8	50.7	50.8
Apr.	268.8	270.9	28.5	28.3	297.4	299.2	9.6	9.5	50.4	50.7
May	270.8	271.9	26.4	27.6	297.2	299.5	8.9	9.2	50.4	50.8
June	272.9	272.8	27.2	27.2	300.1	300.0	9.1	9.1	50.9	50.8
July	279.2	273.5	27.5	27.3	306.7	300.8	9.0	9.1	51.9	50.9
Aug.	271.6	273.9	27.6	27.8	299.2	301.7	9.2	9.2	50.6	51.1
Sept.	273.7	273.8	27.7	28.7	301.4	302.5	9.2	9.5	51.0	51.2
Oct.	270.8	273.6	30.5	29.5	301.3	303.0	10.1	9.7	51.0	51.3
Nov.	273.5	273.4	30.6	30.1	304.2	303.5	10.1	9.9	51.4	51.3
Dec.	276.4	273.4	30.8	30.5	307.2	303.8	10.0	10.0	51.9	51.3
1994 —										
Jan.	273.3	273.3	31.1	30.7	304.4	303.9	10.2	10.1	51.4	51.3
Feb.	271.6	273.5	29.3	30.7	300.9	304.2	9.7	10.1	50.8	51.3
PERSONS										
1992 —										
Dec.	627.6	631.0	85.5	83.7	713.1	714.6	12.0	11.7	61.7	61.8
1993 —										
Jan.	630.3	630.5	83.0	83.1	713.3	713.6	11.6	11.6	61.7	61.7
Feb.	634.0	630.6	79.5	82.0	713.5	712.6	11.1	11.5	61.7	61.6
Mar.	628.8	631.4	82.1	80.7	710.9	712.1	11.5	11.3	61.4	61.5
Apr.	629.3	632.9	80.4	79.0	709.8	711.9	11.3	11.1	61.3	61.5
May	637.6	634.6	75.5	77.4	713.1	711.9	10.6	10.9	61.6	61.5
June	634.9	635.6	78.0	76.1	712.9	711.7	10.9	10.7	61.5	61.4
July	639.9	636.1	75.3	75.4	715.2	711.5	10.5	10.6	61.7	61.4
Aug.	636.2	636.2	72.2	75.6	708.4	711.8	10.2	10.6	61.1	61.4
Sept.	634.5	636.0	74.8	76.5	709.4	712.5	10.6	10.7	61.1	61.4
Oct.	631.7	635.7	80.7	77.6	712.4	713.3	11.3	10.9	61.4	61.4
Nov.	636.0	635.6	80.3	78.5	716.3	714.2	11.2	11.0	61.7	61.5
Dec.	640.6	635.6	78.4	79.0	719.0	714.6	10.9	11.1	61.9	61.5
1994 —										
Jan.	635.8	635.3	80.3	79.1	716.1	714.4	11.2	11.1	61.6	61.4
Feb.	631.4	635.1	75.9	79.0	707.3	714.2	10.7	11.1	60.8	61.4

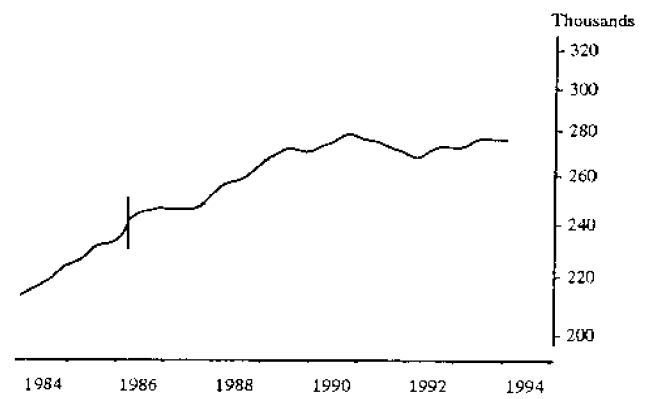
(a) Seasonally adjusted and trend series have been revised. See the Explanatory Notes for further details.

TREND SERIES, SOUTH AUSTRALIA

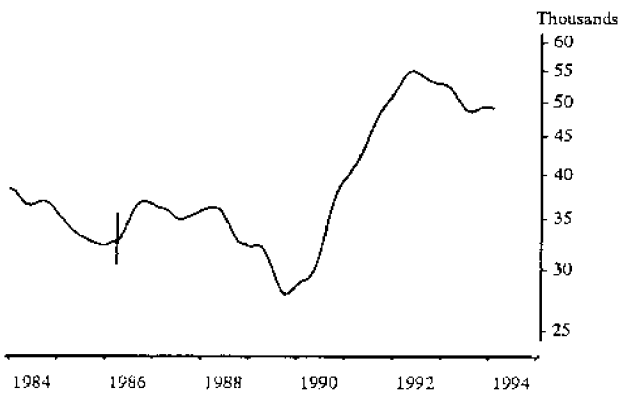
EMPLOYED MALES (a)



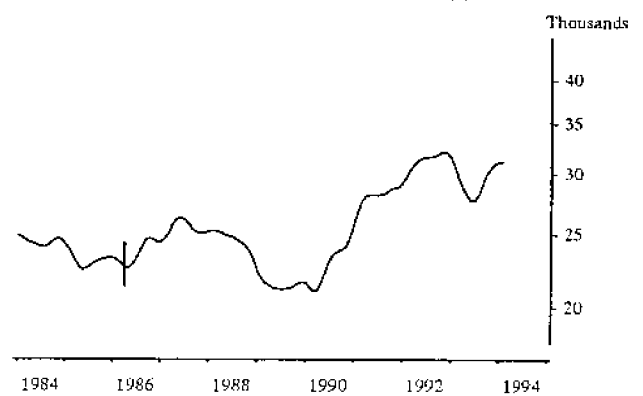
EMPLOYED FEMALES (a)



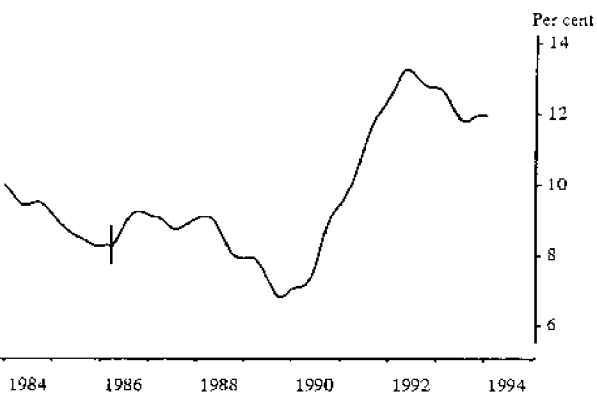
UNEMPLOYED MALES (a)



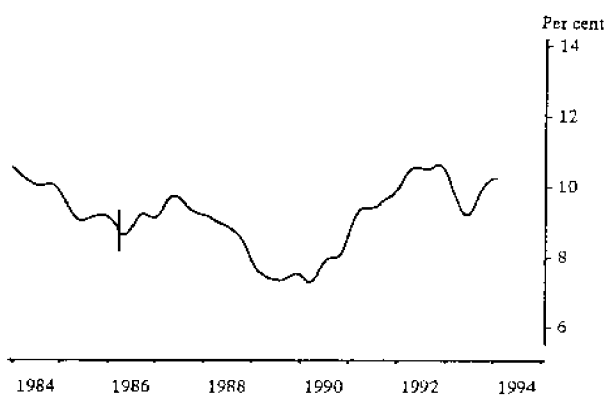
UNEMPLOYED FEMALES (a)



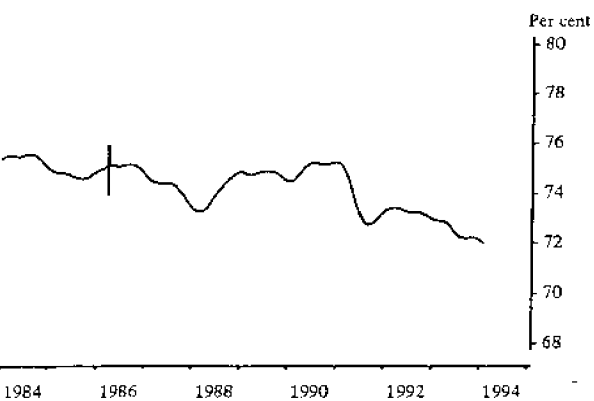
MALE UNEMPLOYMENT RATE



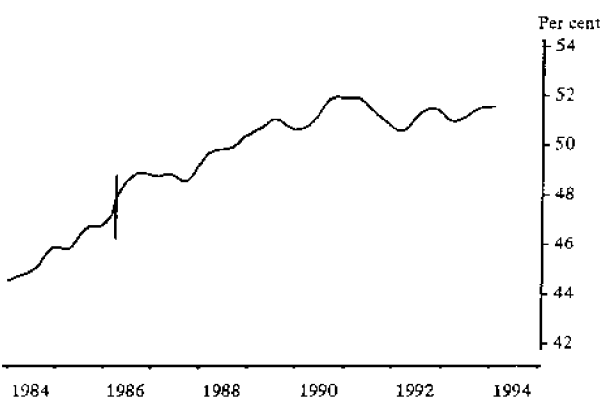
FEMALE UNEMPLOYMENT RATE



MALE PARTICIPATION RATE



FEMALE PARTICIPATION RATE



(a) These graphs have been drawn to a semi-logarithmic scale to enable comparisons to be made of rates of change in series of differing magnitude.
 | Indicates a change in definition - see paragraphs 15 and 16 of the Explanatory Notes for further details.

TABLE 3 — CIVILIAN LABOUR FORCE : AGE GROUP, SOUTH AUSTRALIA
(*000)

Month	Age group (years)								Total
	15-19	20-24	25-34	35-44	45-54	55-59	60-64	65 & over	
MALES									
1992 —									
Dec.	31.4	54.4	107.3	102.0	74.6	24.8	15.1	7.9	417.4
1993 —									
Jan.	32.6	53.8	108.0	101.9	73.2	23.3	14.5	7.9	415.3
Feb.	29.8	54.5	108.5	102.7	74.7	23.8	14.7	6.6	415.4
Mar.	28.7	52.5	106.7	102.0	75.8	24.4	15.1	7.7	412.9
Apr.	27.6	51.6	107.4	101.7	76.1	23.7	16.0	7.9	412.0
May	27.0	52.5	107.5	103.3	77.6	23.5	15.4	8.4	415.2
June	26.6	50.8	107.7	102.5	76.9	24.3	15.2	6.7	410.6
July	27.9	50.1	106.3	100.3	77.5	22.6	15.0	7.5	407.2
Aug.	25.9	50.2	106.3	100.1	76.7	21.9	14.3	8.9	404.4
Sept.	25.5	50.2	106.2	102.1	77.8	23.2	15.7	7.3	408.0
Oct.	26.8	49.6	107.5	102.9	76.7	23.8	15.2	7.5	409.9
Nov.	26.1	50.3	107.7	103.1	77.1	23.9	14.2	7.8	410.2
Dec.	31.2	52.5	107.1	102.8	77.1	23.2	14.6	7.7	416.1
1994 —									
Jan.	30.4	53.5	107.4	103.4	76.4	22.0	14.9	7.5	415.4
Feb.	28.8	52.0	105.3	104.3	76.3	21.7	14.2	7.0	409.6
FEMALES									
1992 —									
Dec.	32.5	44.9	76.5	79.4	53.2	10.7	4.0	*2.3	303.5
1993 —									
Jan.	33.7	43.4	74.3	79.6	51.6	10.6	4.6	*1.8	299.6
Feb.	30.9	45.1	78.7	82.3	52.9	11.0	3.8	*2.1	306.6
Mar.	28.8	43.2	77.6	79.4	54.0	12.2	5.7	*2.3	303.2
Apr.	27.6	42.4	76.8	79.8	54.0	10.8	5.5	*2.0	298.9
May	26.8	42.0	74.0	79.0	55.8	11.9	5.3	2.6	297.4
June	25.6	42.6	74.6	80.0	57.1	12.1	5.0	*2.3	299.3
July	25.9	42.6	74.1	79.8	57.8	12.9	5.7	2.5	301.3
Aug.	23.8	41.9	75.1	80.9	56.2	11.1	5.3	*1.7	295.9
Sept.	24.6	42.0	75.0	83.1	57.7	11.0	6.3	2.7	302.5
Oct.	25.4	43.0	75.1	81.8	55.8	11.1	4.8	2.5	299.5
Nov.	26.4	42.3	75.5	82.9	56.8	12.1	4.8	*1.8	302.6
Dec.	29.6	43.5	76.7	83.6	57.8	12.1	5.3	*2.2	310.9
1994 —									
Jan.	30.6	42.3	73.7	79.7	56.5	13.2	3.4	2.6	302.0
Feb.	28.1	42.1	76.8	82.3	56.5	13.5	4.0	2.5	305.9
PERSONS									
1992 —									
Dec.	63.9	99.2	183.8	181.4	127.8	35.5	19.1	10.2	720.9
1993 —									
Jan.	66.3	97.2	182.3	181.5	124.8	33.9	19.1	9.7	714.9
Feb.	60.7	99.6	187.3	185.0	127.5	34.8	18.5	8.7	722.1
Mar.	57.4	95.7	184.2	181.4	129.9	36.6	20.9	10.1	716.1
Apr.	55.2	93.9	184.2	181.5	130.0	34.6	21.5	9.9	710.9
May	53.9	94.5	181.5	182.3	133.4	35.4	20.6	11.1	712.6
June	52.2	93.4	182.4	182.4	134.0	36.3	20.2	9.0	709.9
July	53.8	92.7	180.4	180.1	135.3	35.5	20.8	10.0	708.5
Aug.	49.7	92.0	181.4	181.0	133.0	32.9	19.6	10.6	700.3
Sept.	50.1	92.2	181.2	185.2	135.5	34.3	22.0	10.0	710.5
Oct.	52.2	92.5	182.7	184.6	132.5	35.0	19.9	10.0	709.4
Nov.	52.5	92.6	183.2	186.0	133.9	36.0	19.1	9.6	712.8
Dec.	60.8	96.0	183.8	186.4	134.9	35.3	19.9	9.9	727.0
1994 —									
Jan.	61.0	95.8	181.1	183.1	132.9	35.2	18.2	10.1	717.4
Feb.	56.9	94.1	182.1	186.6	132.8	35.2	18.2	9.5	715.5

TABLE 4 — CIVILIAN LABOUR FORCE : PARTICIPATION RATES BY AGE GROUP, SOUTH AUSTRALIA
(Per cent)

Month	Age group (years)								Total
	15-19	20-24	25-34	35-44	45-54	55-59	60-64	65 & over	
MALES									
1992 —									
Dec.	59.6	92.9	93.0	93.1	88.8	77.3	47.3	9.5	73.6
1993 —									
Jan.	62.1	92.1	93.7	92.9	86.9	72.4	45.7	9.5	73.2
Feb.	56.9	93.2	94.2	93.6	88.3	74.0	46.4	8.0	73.2
Mar.	54.8	90.0	92.6	92.9	89.4	75.6	47.8	9.2	72.7
Apr.	52.9	88.3	93.3	92.6	89.4	73.6	50.6	9.4	72.5
May	52.0	90.0	93.4	94.0	90.9	72.8	48.8	10.0	73.0
June	51.3	87.1	93.6	93.2	89.7	75.0	48.4	7.9	72.2
July	53.9	86.1	92.4	91.2	90.1	69.7	48.0	8.9	71.6
Aug.	50.2	86.3	92.5	90.9	89.0	67.5	45.8	10.6	71.0
Sept.	49.4	86.6	92.3	92.7	90.0	71.5	50.3	8.6	71.6
Oct.	52.0	85.5	93.6	93.3	88.5	73.3	48.6	8.8	71.9
Nov.	50.7	86.9	93.7	93.5	88.6	73.5	45.8	9.2	71.9
Dec.	60.7	90.9	93.2	93.2	88.3	71.0	47.0	9.1	72.9
1994 —									
Jan.	59.3	92.7	93.5	93.7	87.3	67.2	48.0	8.7	72.8
Feb.	56.2	90.3	91.7	94.5	86.9	66.3	46.0	8.2	71.7
FEMALES									
1992 —									
Dec.	64.8	79.6	66.8	72.2	64.3	33.4	12.4	*2.0	51.6
1993 —									
Jan.	67.5	77.0	65.0	72.4	62.1	33.0	14.1	*1.6	50.9
Feb.	61.9	80.1	68.8	74.7	63.4	34.2	11.7	*1.9	52.0
Mar.	57.8	76.7	67.9	72.1	64.6	37.9	17.8	*2.1	51.4
Apr.	55.7	75.4	67.2	72.4	64.3	33.6	17.1	*1.8	50.7
May	54.2	74.7	64.9	71.6	66.3	36.8	16.5	2.4	50.4
June	51.9	75.8	65.4	72.5	67.6	37.3	15.6	*2.1	50.7
July	52.5	75.9	65.0	72.3	68.2	39.8	18.1	2.2	51.0
Aug.	48.3	74.8	65.9	73.3	66.2	34.0	16.8	*1.5	50.1
Sept.	50.2	75.1	65.9	75.2	67.6	34.0	19.9	2.4	51.2
Oct.	51.8	77.0	66.0	74.0	65.3	34.1	15.1	2.3	50.7
Nov.	53.9	76.0	66.4	74.9	66.2	36.9	15.3	*1.6	51.2
Dec.	60.5	78.2	67.5	75.5	67.2	37.0	16.9	*2.0	52.5
1994 —									
Jan.	62.7	76.2	64.9	71.9	65.4	40.3	10.7	2.3	51.0
Feb.	57.6	76.0	67.6	74.3	65.3	41.1	12.6	2.3	51.6
PERSONS									
1992 —									
Dec.	62.2	86.4	79.9	82.6	76.6	55.4	29.7	5.2	62.4
1993 —									
Jan.	64.7	84.7	79.4	82.6	74.6	52.7	29.8	5.0	61.8
Feb.	59.4	86.8	81.6	84.2	76.0	54.1	28.9	4.5	62.4
Mar.	56.3	83.5	80.3	82.5	77.1	56.8	32.7	5.2	61.9
Apr.	54.3	82.0	80.3	82.5	76.9	53.6	33.8	5.1	61.4
May	53.1	82.5	79.2	82.8	78.7	54.8	32.5	5.7	61.5
June	51.6	81.6	79.6	82.8	78.7	56.1	31.9	4.6	61.2
July	53.2	81.1	78.8	81.7	79.3	54.7	33.0	5.1	61.1
Aug.	49.3	80.7	79.2	82.1	77.7	50.8	31.2	5.4	60.4
Sept.	49.8	81.0	79.2	83.9	78.9	52.7	35.0	5.1	61.2
Oct.	51.9	81.4	79.8	83.6	76.9	53.7	31.8	5.1	61.1
Nov.	52.2	81.6	80.1	84.2	77.5	55.2	30.4	4.9	61.4
Dec.	60.6	84.7	80.4	84.3	77.8	54.0	31.8	5.0	62.5
1994 —									
Jan.	60.9	84.6	79.2	82.8	76.5	53.7	29.2	5.1	61.7
Feb.	56.9	83.3	79.7	84.4	76.2	53.7	29.2	4.8	61.5

TABLE 5 — EMPLOYED PERSONS : FULL-TIME AND PART-TIME STATUS BY AGE GROUP, SOUTH AUSTRALIA
(^{'000})

Month	Full-time			Part-time			Total		
	Males	Females	Persons	Males	Females	Persons	Males	Females	Persons
15-19 YEARS									
1992 —									
Dec.	12.7	7.7	20.4	9.5	15.4	25.0	22.3	23.1	45.4
1993 —									
Jan.	13.9	7.9	21.8	8.6	16.9	25.5	22.5	24.8	47.3
Feb.	11.3	7.1	18.4	9.3	16.5	25.7	20.6	23.5	44.1
Mar.	11.7	6.7	18.4	8.5	15.3	23.8	20.2	22.0	42.1
Apr.	10.2	6.1	16.3	8.7	15.9	24.6	18.9	22.0	40.9
May	10.8	7.1	17.8	8.5	14.1	22.6	19.3	21.1	40.5
June	9.5	6.7	16.3	9.2	13.8	23.1	18.8	20.6	39.4
July	10.5	6.5	17.0	9.4	14.2	23.5	19.9	20.7	40.5
Aug.	9.6	5.1	14.6	8.7	13.3	22.0	18.2	18.4	36.6
Sept.	9.6	5.7	15.3	9.0	12.4	21.4	18.6	18.0	36.7
Oct.	10.1	6.4	16.5	8.8	12.0	20.8	18.9	18.4	37.4
Nov.	10.3	5.2	15.4	9.2	12.0	21.2	19.5	17.2	36.7
Dec.	13.1	6.9	20.0	10.3	13.0	23.2	23.4	19.9	43.2
1994 —									
Jan.	12.2	5.7	17.9	10.7	13.4	24.1	22.9	19.2	42.1
Feb.	13.0	5.7	18.7	8.1	12.6	20.6	21.0	18.3	39.3
20-24 YEARS									
1992 —									
Dec.	38.2	25.9	64.1	5.9	10.9	16.8	44.1	36.9	80.9
1993 —									
Jan.	36.3	26.3	62.6	6.8	9.3	16.1	43.2	35.6	78.7
Feb.	37.4	25.9	63.3	7.6	10.1	17.7	45.0	36.0	81.0
Mar.	34.5	24.1	58.6	8.2	11.9	20.1	42.6	36.0	78.7
Apr.	33.9	24.0	57.9	8.3	11.4	19.7	42.2	35.4	77.6
May	36.9	23.9	60.8	6.1	11.9	17.9	43.0	35.8	78.7
June	36.2	26.1	62.3	5.6	12.1	17.7	41.8	38.2	80.0
July	35.5	26.7	62.2	5.7	12.3	18.0	41.2	39.0	80.3
Aug.	36.2	24.9	61.1	7.0	12.1	19.1	43.2	37.0	80.2
Sept.	35.4	26.9	62.3	6.1	10.6	16.7	41.5	37.4	78.9
Oct.	36.2	26.0	62.2	5.8	10.3	16.1	42.1	36.3	78.4
Nov.	35.7	26.6	62.3	6.9	11.0	18.0	42.6	37.7	80.3
Dec.	37.1	27.0	64.1	7.5	11.0	18.5	44.6	38.0	82.6
1994 —									
Jan.	34.9	25.4	60.4	8.2	11.1	19.3	43.1	36.6	79.7
Feb.	34.5	26.8	61.3	7.2	9.7	17.0	41.7	36.5	78.2
25-34 YEARS									
1992 —									
Dec.	87.1	41.9	129.0	6.8	27.7	34.5	93.9	69.6	163.5
1993 —									
Jan.	86.4	39.2	125.5	6.3	27.8	34.0	92.6	66.9	159.6
Feb.	87.5	41.2	128.7	9.1	30.3	39.5	96.7	71.5	168.2
Mar.	88.6	42.3	130.9	7.3	28.4	35.8	96.0	70.7	166.7
Apr.	87.6	38.3	125.8	7.6	30.1	37.7	95.2	68.3	163.5
May	89.2	42.3	131.5	8.4	26.0	34.4	97.6	68.3	165.9
June	91.2	40.0	131.2	6.1	28.5	34.6	97.3	68.5	165.8
July	87.1	41.5	128.6	6.3	26.4	32.6	93.4	67.9	161.3
Aug.	87.6	40.2	127.8	6.8	27.8	34.6	94.4	67.9	162.4
Sept.	88.2	40.4	128.6	6.5	28.2	34.6	94.7	68.5	163.2
Oct.	89.0	38.6	127.6	6.7	30.3	37.0	95.6	69.0	164.6
Nov.	85.8	38.9	124.7	7.9	29.8	37.7	93.7	68.7	162.4
Dec.	86.7	42.4	129.2	6.5	28.1	34.6	93.2	70.5	163.7
1994 —									
Jan.	86.6	41.0	127.6	4.5	26.6	31.1	91.1	67.6	158.7
Feb.	86.7	42.0	128.8	4.8	27.8	32.6	91.6	69.8	161.4

TABLE 5 — EMPLOYED PERSONS : FULL-TIME AND PART-TIME STATUS BY AGE GROUP, SOUTH AUSTRALIA—continued
 ('000)

Month	Full-time			Part-time			Total		
	Males	Females	Persons	Males	Females	Persons	Males	Females	Persons
35-44 YEARS									
1992 —									
Dec.	88.1	39.1	127.2	4.2	35.9	40.1	92.3	75.0	167.3
1993 —									
Jan.	86.3	39.4	125.7	5.3	34.7	40.0	91.6	74.1	165.7
Feb.	88.2	39.3	127.5	4.9	36.4	41.3	93.1	75.7	168.8
Mar.	86.8	35.6	122.4	5.3	38.3	43.5	92.1	73.8	165.9
Apr.	87.0	37.8	124.8	5.6	38.2	43.7	92.6	75.9	168.5
May	87.3	34.8	122.1	5.6	39.2	44.8	92.9	74.0	166.8
June	86.7	36.1	122.8	4.9	37.9	42.8	91.6	74.0	165.6
July	86.5	35.8	122.2	4.7	38.2	42.9	91.2	74.0	165.2
Aug.	85.7	38.8	124.5	5.7	36.3	42.1	91.5	75.1	166.6
Sept.	87.7	37.8	125.5	5.8	39.2	45.0	93.5	77.0	170.5
Oct.	89.7	36.8	126.4	4.3	38.8	43.0	93.9	75.5	169.5
Nov.	89.5	38.6	128.1	4.8	38.8	43.6	94.2	77.4	171.7
Dec.	90.8	40.6	131.4	4.2	36.1	40.3	95.0	76.7	171.7
1994 —									
Jan.	91.3	36.5	127.8	4.4	37.8	42.2	95.6	74.4	170.0
Feb.	92.6	37.9	130.6	4.5	38.5	43.1	97.1	76.5	173.6
45-54 YEARS									
1992 —									
Dec.	64.9	23.8	88.7	3.9	26.6	30.5	68.7	50.4	119.2
1993 —									
Jan.	63.8	26.2	90.0	3.6	23.1	26.7	67.4	49.4	116.7
Feb.	65.2	24.5	89.6	3.4	24.4	27.8	68.6	48.9	117.5
Mar.	64.9	25.3	90.3	4.9	24.4	29.3	69.9	49.8	119.6
Apr.	65.2	26.8	92.0	4.8	24.4	29.2	70.0	51.1	121.2
May	67.2	28.1	95.3	4.4	24.9	29.4	71.6	53.1	124.7
June	67.8	31.2	99.0	3.9	22.7	26.6	71.7	53.9	125.6
July	69.3	29.5	98.7	3.6	25.0	28.6	72.9	54.4	127.3
Aug.	66.7	28.8	95.5	5.1	24.8	29.8	71.8	53.6	125.4
Sept.	67.0	29.1	96.1	5.0	25.3	30.3	72.0	54.4	126.4
Oct.	65.7	28.0	93.6	4.8	24.7	29.5	70.5	52.7	123.2
Nov.	67.8	27.4	95.2	4.1	27.1	31.2	71.9	54.6	126.4
Dec.	67.5	27.3	94.7	4.1	28.1	32.2	71.6	55.3	126.9
1994 —									
Jan.	66.8	27.7	94.5	4.2	25.2	29.4	71.0	52.9	123.9
Feb.	67.2	27.8	95.0	4.0	24.8	28.8	71.2	52.6	123.8
55-59 YEARS									
1992 —									
Dec.	19.8	5.0	24.7	*1.6	4.9	6.6	21.4	9.9	31.3
1993 —									
Jan.	18.8	5.1	23.9	*1.6	4.7	6.3	20.3	9.8	30.1
Feb.	18.6	4.6	23.2	*1.5	5.7	7.2	20.0	10.4	30.4
Mar.	18.9	5.9	24.8	*2.2	5.8	8.1	21.1	11.7	32.8
Apr.	19.1	4.6	23.7	*1.8	5.5	7.3	21.0	10.0	31.0
May	18.4	5.5	23.9	*2.2	5.6	7.8	20.6	11.1	31.7
June	18.2	5.3	23.5	2.7	6.2	9.0	21.0	11.5	32.5
July	17.3	6.0	23.3	2.6	6.2	8.7	19.8	12.2	32.0
Aug.	16.1	4.9	21.0	3.6	6.0	9.6	19.7	10.9	30.6
Sept.	15.9	4.5	20.4	3.5	6.3	9.9	19.4	10.8	30.2
Oct.	16.8	5.7	22.5	3.1	5.0	8.1	19.9	10.7	30.6
Nov.	17.5	6.0	23.5	3.3	5.6	8.9	20.8	11.6	32.4
Dec.	17.0	5.4	22.4	3.0	6.1	9.1	20.0	11.6	31.5
1994 —									
Jan.	16.2	6.2	22.4	2.8	5.7	8.4	19.0	11.8	30.8
Feb.	16.0	6.2	22.2	2.7	5.9	8.6	18.7	12.1	30.8

TABLE 5 — EMPLOYED PERSONS: FULL-TIME AND PART-TIME STATUS BY AGE GROUP, SOUTH AUSTRALIA—continued
(*000)

Month	Full-time			Part-time			Total		
	Males	Females	Persons	Males	Females	Persons	Males	Females	Persons
60-64 YEARS									
<i>1992 —</i>									
Dec.	10.4	*1.8	12.1	*1.8	*2.2	4.0	12.2	4.0	16.2
<i>1993 —</i>									
Jan.	10.1	*2.2	12.3	*1.8	*2.2	4.0	11.9	4.4	16.3
Feb.	10.4	*1.8	12.2	*1.7	*1.9	3.6	12.1	3.8	15.8
Mar.	10.8	*2.0	12.8	*2.0	3.8	5.7	12.8	5.7	18.5
Apr.	10.9	*1.9	12.8	2.5	3.3	5.7	13.4	5.2	18.6
May	11.9	*2.0	13.9	*1.4	3.3	4.7	13.3	5.3	18.6
June	11.6	*1.6	13.2	*1.8	3.4	5.2	13.4	5.0	18.4
July	12.0	*2.3	14.3	*1.6	3.3	4.9	13.6	5.6	19.2
Aug.	10.4	*2.3	12.7	*2.3	3.0	5.3	12.7	5.3	18.0
Sept.	10.7	2.9	13.6	3.1	3.4	6.4	13.7	6.3	20.0
Oct.	10.5	*1.9	12.3	2.5	2.8	5.3	13.0	4.6	17.6
Nov.	9.8	*2.3	12.1	2.4	2.5	4.8	12.1	4.8	17.0
Dec.	9.9	2.6	12.5	2.3	2.4	4.8	12.3	5.0	17.3
<i>1994 —</i>									
Jan.	8.4	*1.9	10.3	2.8	*1.3	4.1	11.2	3.2	14.4
Feb.	8.5	*1.6	10.1	2.7	2.4	5.1	11.2	4.0	15.2
65 YEARS & OVER									
<i>1992 —</i>									
Dec.	5.0	*0.6	5.6	2.7	*1.6	4.4	7.8	*2.3	10.0
<i>1993 —</i>									
Jan.	4.5	*0.5	5.0	3.2	*1.3	4.6	7.8	*1.8	9.6
Feb.	4.0	*0.7	4.7	2.6	*1.4	4.1	6.6	*2.1	8.7
Mar.	4.4	*0.5	4.9	3.2	*1.8	5.0	7.6	*2.3	9.9
Apr.	4.2	*0.7	4.9	3.6	*1.3	4.9	7.8	*2.0	9.8
May	4.8	*0.4	5.2	3.6	*2.2	5.8	8.4	2.6	11.1
June	4.0	*0.9	4.9	2.5	*1.4	3.9	6.5	*2.3	8.8
July	4.4	*0.8	5.2	3.1	*1.7	4.8	7.5	2.5	10.0
Aug.	4.6	*0.6	5.2	4.3	*1.1	5.4	8.9	*1.7	10.6
Sept.	3.5	*1.1	4.6	3.6	*1.6	5.2	7.1	2.7	9.8
Oct.	3.9	*0.8	4.7	3.4	*1.6	5.0	7.3	2.4	9.7
Nov.	4.1	*0.8	4.9	3.7	*1.1	4.8	7.8	*1.8	9.6
Dec.	3.9	*1.0	4.9	3.8	*1.1	4.9	7.7	*2.1	9.8
<i>1994 —</i>									
Jan.	4.1	*1.3	5.4	3.3	*1.3	4.7	7.5	2.6	10.1
Feb.	3.7	*1.2	4.9	3.3	*1.4	4.7	7.0	2.5	9.5
TOTAL									
<i>1992 —</i>									
Dec.	326.1	145.8	471.9	36.5	125.3	161.8	362.6	271.1	633.7
<i>1993 —</i>									
Jan.	320.0	146.8	466.8	37.3	120.0	157.3	357.3	266.8	624.1
Feb.	322.6	145.0	467.6	40.1	126.7	166.9	362.8	271.7	634.5
Mar.	320.6	142.4	463.0	41.6	129.7	171.3	362.2	272.1	634.3
Apr.	318.2	140.1	458.2	42.8	130.0	172.8	361.0	270.0	631.0
May	326.4	144.1	470.6	40.3	127.1	167.4	366.7	271.3	638.0
June	325.2	147.9	473.1	36.8	126.0	162.9	362.0	273.9	636.0
July	322.5	149.1	471.6	37.0	127.2	164.2	359.5	276.3	635.8
Aug.	316.9	145.5	462.5	43.5	124.3	167.9	360.4	269.9	630.3
Sept.	318.1	148.3	466.3	42.6	126.8	169.4	360.7	275.1	635.8
Oct.	321.7	144.2	465.9	39.5	125.5	164.9	361.2	269.7	630.9
Nov.	320.4	145.9	466.2	42.3	127.9	170.2	362.7	273.7	636.4
Dec.	326.1	153.1	479.2	41.7	126.0	167.7	367.8	279.0	646.9
<i>1994 —</i>									
Jan.	320.5	145.8	466.3	40.8	122.5	163.3	361.3	268.3	629.6
Feb.	322.2	149.2	471.4	37.4	123.1	160.5	359.6	272.3	631.9

TABLE 6 — EMPLOYED PERSONS : STATUS OF WORKER, SOUTH AUSTRALIA
(*000)

Month	Wage and salary earners			Employers and self-employed			Total (a)		
	Males	Females	Persons	Males	Females	Persons	Males	Females	Persons
1992 —									
Nov.	285.7	229.6	515.3	73.8	33.7	107.5	363.5	268.4	632.0
1993 —									
Feb.	282.3	231.7	514.0	75.8	35.2	111.0	362.8	271.7	634.5
May	287.5	232.7	520.2	75.0	35.0	110.0	366.7	271.3	638.0
Aug.	278.2	230.1	508.3	78.7	35.8	114.5	360.4	269.9	630.3
Nov.	281.4	234.3	515.7	76.5	35.9	112.4	362.7	273.7	636.4
1994 —									
Feb.	285.2	228.6	513.9	72.1	39.2	111.3	359.6	272.3	631.9

(a) Includes unpaid family helpers.

TABLE 7 — EMPLOYED PERSONS : OCCUPATION (a), SOUTH AUSTRALIA
(*000)

Occupation (a)	1992		1993		1994	
	Nov.	Feb.	May	Aug.	Nov.	Feb.
MALES						
Managers and administrators	56.3	57.0	63.0	59.8	60.3	63.2
Professionals	42.5	42.7	49.1	50.9	49.9	45.2
Para-professionals	21.3	19.8	19.8	19.3	21.5	20.0
Tradespersons	85.5	83.0	83.2	81.1	80.1	83.1
Clerks	23.3	19.5	18.0	17.2	18.7	20.0
Salespersons and personal service workers	36.4	42.9	35.7	34.5	32.9	32.3
Plant and machine operators, and drivers	36.5	38.4	38.3	38.8	37.1	35.6
Labourers and related workers	61.8	59.5	59.5	58.8	62.2	60.3
<i>Total</i>	<i>363.5</i>	<i>362.8</i>	<i>366.7</i>	<i>360.4</i>	<i>362.7</i>	<i>359.6</i>
FEMALES						
Managers and administrators	19.9	19.6	20.6	19.8	20.7	25.0
Professionals	34.0	36.3	39.0	38.6	34.9	35.9
Para-professionals	20.6	21.0	20.8	21.2	20.6	19.3
Tradespersons	9.8	9.4	10.7	13.5	13.2	11.6
Clerks	70.0	71.5	79.4	77.3	77.0	70.2
Salespersons and personal service workers	69.4	68.3	61.9	56.8	61.4	63.9
Plant and machine operators, and drivers	5.2	5.8	5.1	6.0	6.4	6.7
Labourers and related workers	39.5	39.9	33.7	36.8	39.6	39.7
<i>Total</i>	<i>268.4</i>	<i>271.7</i>	<i>271.3</i>	<i>269.9</i>	<i>273.7</i>	<i>272.3</i>
PERSONS						
Managers and administrators	76.2	76.6	83.6	79.7	81.0	88.2
Professionals	76.6	78.9	88.1	89.6	84.8	81.1
Para-professionals	41.9	40.8	40.7	40.5	42.1	39.3
Tradespersons	95.3	92.4	93.9	94.6	93.3	94.7
Clerks	93.3	90.9	97.4	94.5	95.7	90.2
Salespersons and personal service workers	105.7	111.3	97.7	91.3	94.3	96.2
Plant and machine operators, and drivers	41.6	44.2	43.4	44.7	43.5	42.3
Labourers and related workers	101.3	99.4	93.2	95.5	101.8	100.0
<i>Total</i>	<i>632.0</i>	<i>634.5</i>	<i>638.0</i>	<i>630.3</i>	<i>636.4</i>	<i>631.9</i>

(a) Classified according to the Australian Standard Classification of Occupations (ASCO).

TABLE 8 — EMPLOYED PERSONS : INDUSTRY, SOUTH AUSTRALIA
(’000)

Industry	1992		1993			1994	
	Nov.	Feb.	May	Aug.	Nov.	Feb.	
MALES							
Agriculture, forestry, fishing and hunting	35.0	35.6	37.8	34.1	34.6	32.7	
Agriculture and services to agriculture	32.4	33.0	34.9	32.4	32.4	30.7	
Mining	3.5	4.6	4.2	4.6	3.8	4.0	
Manufacturing	70.2	74.6	74.4	70.8	69.2	73.0	
Food, beverages and tobacco	11.9	12.4	12.2	9.7	10.2	8.9	
Metal Products	10.6	11.2	13.5	14.2	13.5	12.3	
Other manufacturing	47.7	51.0	48.7	46.9	45.5	51.9	
Electricity, gas and water	7.2	8.1	6.6	6.2	6.3	6.6	
Construction	31.1	33.1	32.6	33.8	33.2	27.0	
Wholesale trade	28.8	23.6	22.9	23.0	26.3	27.5	
Retail trade	44.6	45.2	47.6	45.8	44.3	46.5	
Transport and storage	20.6	19.8	19.5	24.3	23.1	20.7	
Communication	6.9	6.5	6.2	4.9	5.4	6.6	
Finance, property and business services	32.6	29.7	27.7	30.2	31.8	31.3	
Public administration and defence	15.9	14.3	15.8	13.3	10.8	10.9	
Community services (a)	45.8	45.6	50.1	49.6	53.6	49.2	
Recreation, personal and other services	21.3	22.0	21.2	19.8	20.3	23.6	
<i>Total</i>	<i>363.5</i>	<i>362.8</i>	<i>366.7</i>	<i>360.4</i>	<i>362.7</i>	<i>359.6</i>	
FEMALES							
Agriculture, forestry, fishing and hunting	15.9	15.5	14.2	13.6	13.9	16.1	
Agriculture and services to agriculture	15.0	15.1	13.8	13.1	13.5	15.3	
Mining	*1.0	*0.7	*0.9	*0.6	*0.4	*0.0	
Manufacturing	25.4	21.6	21.7	22.2	25.2	21.6	
Food, beverages and tobacco	7.0	4.6	5.6	6.2	7.4	5.0	
Metal Products	2.9	2.0	*1.2	*1.4	*1.8	*1.5	
Other manufacturing	15.5	14.9	14.9	14.6	16.1	15.1	
Electricity, gas and water	*0.7	*0.9	*1.2	*1.1	*0.6	*0.9	
Construction	6.3	5.8	6.3	5.8	6.6	3.9	
Wholesale trade	10.1	11.3	11.6	13.2	12.3	14.4	
Retail trade	44.5	48.8	42.3	41.2	45.1	48.4	
Transport and storage	5.0	5.6	4.9	4.3	5.6	6.0	
Communication	2.8	2.7	3.6	3.3	2.0	2.3	
Finance, property and business services	26.0	28.2	28.6	32.0	31.7	29.6	
Public administration and defence	7.8	8.9	9.7	8.7	8.9	9.4	
Community services (a)	93.0	94.9	100.4	96.0	95.2	92.2	
Recreation, personal and other services	29.8	26.9	25.9	28.0	26.3	27.5	
<i>Total</i>	<i>268.4</i>	<i>271.7</i>	<i>271.3</i>	<i>269.9</i>	<i>273.7</i>	<i>272.3</i>	
PERSONS							
Agriculture, forestry, fishing and hunting	50.9	51.1	52.0	47.7	48.4	48.8	
Agriculture and services to agriculture	47.4	48.1	48.7	45.5	46.0	45.9	
Mining	4.4	5.3	5.1	5.2	4.2	4.0	
Manufacturing	95.6	96.2	96.1	93.0	94.4	94.7	
Food, beverages and tobacco	18.9	17.0	17.7	15.9	17.6	13.9	
Metal Products	13.5	13.2	14.7	15.6	15.3	13.8	
Other manufacturing	63.2	66.0	63.7	61.5	61.6	67.0	
Electricity, gas and water	8.0	9.0	7.8	7.3	6.9	7.5	
Construction	37.4	38.9	38.9	39.6	39.8	30.9	
Wholesale trade	38.9	34.9	34.5	36.1	38.6	41.9	
Retail trade	89.1	94.0	89.9	87.0	89.4	94.9	
Transport and storage	25.7	25.4	24.4	28.6	28.7	26.7	
Communication	9.7	9.2	9.9	8.2	7.4	8.9	
Finance, property and business services	58.6	57.8	56.2	62.3	63.5	60.9	
Public administration and defence	23.7	23.2	25.5	22.0	19.7	20.3	
Community services (a)	138.9	140.5	150.5	145.6	148.8	141.4	
Recreation, personal and other services	51.0	48.9	47.1	47.7	46.6	51.1	
<i>Total</i>	<i>632.0</i>	<i>634.5</i>	<i>638.0</i>	<i>630.3</i>	<i>636.4</i>	<i>631.9</i>	

(a) Comprises health, education, libraries etc.; welfare and religious institutions; other community services.

TABLE 9 — EMPLOYED PERSONS : AVERAGE WEEKLY HOURS WORKED BY INDUSTRY, SOUTH AUSTRALIA
(Hours)

Industry	1992		1993		1994	
	Nov.	Feb.	May	Aug.	Nov.	Feb.
MALES						
Agriculture, forestry, fishing and hunting	49.7	53.5	50.8	43.1	48.9	48.9
Agriculture and services to agriculture	48.7	53.2	51.7	44.7	49.7	48.5
Mining	44.0	35.8	43.7	40.5	41.9	45.2
Manufacturing	39.5	37.6	39.5	41.4	40.6	41.9
Food, Beverages and Tobacco	38.1	37.6	40.5	36.4	38.1	40.0
Metal products	36.0	36.6	36.7	40.1	39.3	41.8
Other manufacturing	40.6	37.8	40.0	42.8	41.5	42.2
Electricity, gas and water	37.0	37.4	37.9	36.0	36.6	36.5
Construction	41.1	38.1	41.9	39.8	41.8	40.3
Wholesale trade	41.9	39.3	43.0	43.7	40.4	42.0
Retail trade	38.8	38.0	38.5	39.5	40.1	39.9
Transport and storage	43.8	44.1	44.1	40.2	41.6	44.2
Communication	36.8	32.7	34.5	36.3	38.3	33.3
Finance, property and business services	40.6	39.6	40.2	40.8	41.0	42.1
Public administration and defence	38.1	33.1	36.0	37.0	36.8	38.1
Community services (a)	37.5	38.3	39.6	39.5	37.6	39.7
Recreation, personal and other services	35.8	33.0	36.4	38.1	36.7	35.0
<i>Total</i>	<i>40.5</i>	<i>39.4</i>	<i>40.9</i>	<i>40.5</i>	<i>40.7</i>	<i>41.2</i>
FEMALES						
Agriculture, forestry, fishing and hunting	26.5	28.3	28.8	26.4	29.2	28.1
Agriculture and services to agriculture	26.8	28.6	29.3	26.6	29.8	28.8
Mining	*29.6	*31.7	*33.0	*40.7	*33.9	
Manufacturing	32.6	32.0	31.7	32.6	33.0	34.2
Food, Beverages and Tobacco	31.6	28.9	32.6	28.5	32.4	35.8
Metal products	33.4	34.4	*39.2	*29.5	*33.1	*33.6
Other manufacturing	32.9	32.7	30.8	34.6	33.3	33.7
Electricity, gas and water	*32.7	*39.5	*28.8	*40.2	*26.5	*31.8
Construction	20.0	18.2	20.2	20.2	20.0	17.8
Wholesale trade	29.7	31.9	34.8	34.8	29.5	30.7
Retail trade	26.3	23.5	25.2	25.7	28.1	26.6
Transport and storage	30.6	33.7	30.0	26.7	30.4	31.8
Communication	34.0	29.2	25.5	27.6	28.0	31.1
Finance, property and business services	28.4	26.9	27.3	26.5	26.7	27.5
Public administration and defence	30.1	29.3	30.6	31.9	32.4	31.0
Community services (a)	28.9	28.9	29.7	29.2	29.3	31.0
Recreation, personal and other services	26.1	25.1	27.8	25.4	26.3	25.5
<i>Total</i>	<i>28.3</i>	<i>27.7</i>	<i>28.8</i>	<i>28.3</i>	<i>28.8</i>	<i>29.2</i>
PERSONS						
Agriculture, forestry, fishing and hunting	42.5	45.9	44.8	38.3	43.2	42.0
Agriculture and services to agriculture	41.8	45.5	45.3	39.5	43.8	42.0
Mining	40.8	35.2	41.8	40.5	41.1	45.2
Manufacturing	37.7	36.3	37.7	39.3	38.6	40.1
Food, Beverages and Tobacco	35.7	35.2	38.0	33.3	35.7	38.5
Metal products	35.4	36.3	36.9	39.2	38.6	40.9
Other manufacturing	38.7	36.6	37.8	40.9	39.4	40.3
Electricity, gas and water	36.7	37.6	36.5	36.6	35.7	35.9
Construction	37.6	35.1	38.4	36.9	38.2	37.5
Wholesale trade	38.7	36.9	40.2	40.5	36.9	38.1
Retail trade	32.6	30.5	32.2	33.0	34.1	33.1
Transport and storage	41.2	41.8	41.3	38.2	39.5	41.4
Communication	36.0	31.7	31.2	32.8	35.5	32.8
Finance, property and business services	35.2	33.4	33.7	33.5	33.9	35.0
Public administration and defence	35.4	31.7	33.9	35.0	34.8	34.8
Community services (a)	31.7	32.0	33.0	32.7	32.3	34.0
Recreation, personal and other services	30.2	28.7	31.7	30.6	30.8	29.9
<i>Total</i>	<i>35.4</i>	<i>34.4</i>	<i>35.8</i>	<i>35.3</i>	<i>35.6</i>	<i>36.0</i>

(a) Comprises health; education, libraries etc.; welfare and religious institutions; other community services.

TABLE 10 — UNEMPLOYED PERSONS : AGE GROUP, SOUTH AUSTRALIA
(000)

Month	Age group (years)						Total
	15-19	20-24	25-34	35-44	45-54	55 & over	
MALES							
1992 —							
Dec.	9.1	10.3	13.4	9.7	5.8	6.4	54.8
1993 —							
Jan.	10.1	10.7	15.3	10.3	5.9	5.7	58.0
Feb.	9.3	9.5	11.9	9.5	6.1	6.4	52.7
Mar.	8.5	9.9	10.7	9.9	6.0	5.7	50.7
Apr.	8.7	9.4	12.3	9.1	6.0	5.5	51.0
May	7.7	9.5	9.9	10.4	6.0	4.8	48.5
June	7.9	9.0	10.5	10.9	5.1	5.1	48.6
July	8.0	8.9	12.9	9.1	4.5	4.1	47.7
Aug.	7.7	7.0	11.9	8.6	4.9	3.8	44.0
Sept.	6.9	8.7	11.5	8.6	5.8	6.0	47.4
Oct.	7.9	7.5	11.9	8.9	6.3	6.3	48.7
Nov.	6.6	7.6	14.0	8.9	5.2	5.3	47.5
Dec.	7.8	7.9	13.8	7.8	5.4	5.5	48.3
1994 —							
Jan.	7.5	10.4	16.3	7.8	5.4	6.7	54.1
Feb.	7.8	10.3	13.8	7.2	5.1	6.0	50.1
FEMALES							
1992 —							
Dec.	9.4	8.0	6.9	4.5	2.8	*0.8	32.4
1993 —							
Jan.	8.9	7.8	7.4	5.5	*2.2	*0.9	32.8
Feb.	7.3	9.1	7.2	6.6	4.0	*0.6	34.9
Mar.	6.8	7.1	6.8	5.6	4.3	*0.5	31.1
Apr.	5.6	7.0	8.4	3.9	2.9	*1.0	28.9
May	5.7	6.2	5.7	5.0	2.7	*0.8	26.1
June	5.0	4.4	6.2	6.0	3.2	*0.5	25.3
July	5.2	3.5	6.3	5.8	3.4	*0.8	25.0
Aug.	5.4	4.9	7.2	5.8	2.7	*0.1	26.0
Sept.	6.6	4.6	6.5	6.2	3.3	*0.3	27.4
Oct.	7.0	6.6	6.1	6.2	3.1	*0.7	29.8
Nov.	9.2	4.7	6.9	5.5	*2.2	*0.4	28.9
Dec.	9.7	5.5	6.2	6.9	2.5	*1.0	31.8
1994 —							
Jan.	11.4	5.7	6.1	5.3	3.6	*1.5	33.7
Feb.	9.8	5.6	7.0	5.9	3.9	*1.4	33.6
PERSONS							
1992 —							
Dec.	18.5	18.3	20.3	14.2	8.6	7.2	87.2
1993 —							
Jan.	19.0	18.5	22.7	15.8	8.1	6.6	90.8
Feb.	16.6	18.6	19.1	16.2	10.1	7.0	87.6
Mar.	15.3	17.1	17.5	15.5	10.2	6.2	81.8
Apr.	14.3	16.4	20.7	13.0	8.9	6.5	79.9
May	13.4	15.8	15.6	15.4	8.7	5.6	74.6
June	12.9	13.4	16.6	16.9	8.3	5.7	73.9
July	13.2	12.5	19.1	14.9	7.9	5.0	72.7
Aug.	13.1	11.9	19.1	14.4	7.6	4.0	70.0
Sept.	13.5	13.3	18.0	14.7	9.1	6.2	74.8
Oct.	14.8	14.1	18.0	15.2	9.4	7.0	78.6
Nov.	15.8	12.3	20.9	14.3	7.4	5.7	76.4
Dec.	17.5	13.4	20.1	14.7	7.9	6.5	80.1
1994 —							
Jan.	19.0	16.1	22.4	13.1	9.0	8.2	87.8
Feb.	17.6	15.9	20.8	13.0	9.0	7.4	83.6

TABLE 11 — UNEMPLOYED PERSONS : UNEMPLOYMENT RATES BY AGE GROUP, SOUTH AUSTRALIA
(Per cent)

Month	Age group (years)						Total
	15-19	20-24	25-34	35-44	45-54	55 & over	
MALES							
1992 —							
Dec.	29.1	18.9	12.5	9.5	7.8	13.5	13.1
1993 —							
Jan.	31.0	19.8	14.2	10.1	8.0	12.5	14.0
Feb.	31.0	17.4	10.9	9.3	8.2	14.1	12.7
Mar.	29.6	18.9	10.0	9.7	7.9	12.1	12.3
Apr.	31.5	18.2	11.4	9.0	7.9	11.6	12.4
May	28.6	18.2	9.2	10.1	7.7	10.3	11.7
June	29.5	17.8	9.7	10.6	6.7	11.2	11.8
July	28.8	17.8	12.1	9.1	5.9	9.2	11.7
Aug.	29.7	14.0	11.2	8.6	6.4	8.4	10.9
Sept.	26.9	17.3	10.8	8.4	7.5	12.9	11.6
Oct.	29.4	15.1	11.1	8.7	8.2	13.6	11.9
Nov.	25.2	15.2	13.0	8.6	6.7	11.4	11.6
Dec.	25.1	15.1	12.9	7.6	7.1	12.1	11.6
1994 —							
Jan.	24.8	19.5	15.2	7.5	7.1	15.1	13.0
Feb.	27.0	19.8	13.1	6.9	6.7	13.9	12.2
FEMALES							
1992 —							
Dec.	28.8	17.9	9.0	5.6	5.3	*4.7	10.7
1993 —							
Jan.	26.4	18.0	10.0	7.0	*4.3	*5.4	10.9
Feb.	23.7	20.2	9.2	8.1	7.5	*3.9	11.4
Mar.	23.6	16.5	8.8	7.0	7.9	*2.4	10.3
Apr.	20.4	16.5	11.0	4.8	5.3	*5.8	9.7
May	21.2	14.8	7.7	6.3	4.9	*4.1	8.8
June	19.6	10.3	8.3	7.5	5.6	*2.9	8.5
July	20.1	8.3	8.4	7.2	5.8	*4.0	8.3
Aug.	22.7	11.6	9.6	7.2	4.8	*0.8	8.8
Sept.	26.8	10.9	8.7	7.4	5.7	*1.4	9.1
Oct.	27.4	15.5	8.2	7.6	5.6	*4.0	10.0
Nov.	34.9	11.0	9.1	6.6	*4.0	*2.3	9.5
Dec.	32.7	12.6	8.1	8.3	4.3	*5.2	10.2
1994 —							
Jan.	37.3	13.4	8.3	6.7	6.4	*7.8	11.1
Feb.	34.9	13.2	9.1	7.1	6.9	*7.1	11.0
PERSONS							
1992 —							
Dec.	29.0	18.4	11.0	7.8	6.8	11.2	12.1
1993 —							
Jan.	28.7	19.0	12.5	8.7	6.5	10.6	12.7
Feb.	27.3	18.7	10.2	8.7	7.9	11.4	12.1
Mar.	26.6	17.8	9.5	8.5	7.9	9.2	11.4
Apr.	26.0	17.4	11.2	7.2	6.8	10.0	11.2
May	24.9	16.7	8.6	8.5	6.5	8.5	10.5
June	24.7	14.4	9.1	9.2	6.2	8.8	10.4
July	24.6	13.4	10.6	8.3	5.9	7.6	10.3
Aug.	26.3	12.9	10.5	8.0	5.7	6.3	10.0
Sept.	26.8	14.4	9.9	7.9	6.7	9.4	10.5
Oct.	28.4	15.3	9.9	8.2	7.1	10.8	11.1
Nov.	30.1	13.3	11.4	7.7	5.6	8.8	10.7
Dec.	28.8	14.0	10.9	7.9	5.9	10.0	11.0
1994 —							
Jan.	31.1	16.8	12.4	7.1	6.8	12.9	12.2
Feb.	30.9	16.9	11.4	7.0	6.8	11.8	11.7

TABLE 12 — UNEMPLOYED PERSONS : DURATION OF UNEMPLOYMENT BY SELECTED CHARACTERISTICS
SOUTH AUSTRALIA, FEBRUARY 1994

Duration of unemployment (weeks)	Age group		Total(a)	Married	Not married	Looking for full-time work
	15-34	35-54				
MALES						
	— '000 —					
Under 52	20.7	6.0	28.7	10.9	17.8	25.1
Under 26	14.6	3.7	19.2	6.7	12.5	16.4
26 and under 52	6.1	* 2.2	9.5	4.3	5.3	8.8
52 and over	11.1	6.3	21.3	9.9	11.4	20.9
52 and under 104	3.9	2.7	7.5	3.3	4.2	7.5
104 and over	7.2	3.5	13.8	6.6	7.2	13.4
Total	31.8	12.2	50.1	20.9	29.2	46.0
	— weeks —					
Mean duration —	59.1	79.1	71.1	81.6	63.6	74.0
Median duration —	30	52	33	41	31	39
FEMALES						
	— '000 —					
Under 52	16.4	6.5	23.8	9.7	14.1	16.1
Under 26	12.8	4.8	18.0	7.3	10.7	11.8
26 and under 52	3.6	* 1.6	5.8	* 2.3	3.5	4.3
52 and over	6.0	3.3	9.8	3.6	6.1	7.6
52 and under 104	3.3	* 1.4	4.8	* 2.1	2.8	3.3
104 and over	2.7	* 1.9	4.9	* 1.6	3.3	4.3
Total	22.4	9.8	33.6	13.3	20.3	23.7
	— weeks —					
Mean duration —	39.4	48.6	45.5	41.6	48.1	52.6
Median duration —	16	26	18	13	21	26
PERSONS						
	— '000 —					
Under 52	37.1	12.4	52.5	20.6	31.9	41.2
Under 26	27.4	8.6	37.2	14.0	23.2	28.2
26 and under 52	9.6	3.9	15.3	6.6	8.7	13.1
52 and over	17.1	9.6	31.1	13.6	17.5	28.5
52 and under 104	7.2	4.1	12.4	5.3	7.0	10.8
104 and over	9.9	5.5	18.7	8.2	10.5	17.7
Total	54.2	22.0	83.6	34.1	49.5	69.8
	— weeks —					
Mean duration —	50.9	65.6	60.8	66.0	57.2	66.7
Median duration —	23	32	27	28	26	31

(a) Includes persons aged 55 and over, details for whom are not shown separately.

UNEMPLOYMENT RATES BY AGE GROUP BY SEX,
SOUTH AUSTRALIA, FEBRUARY 1994

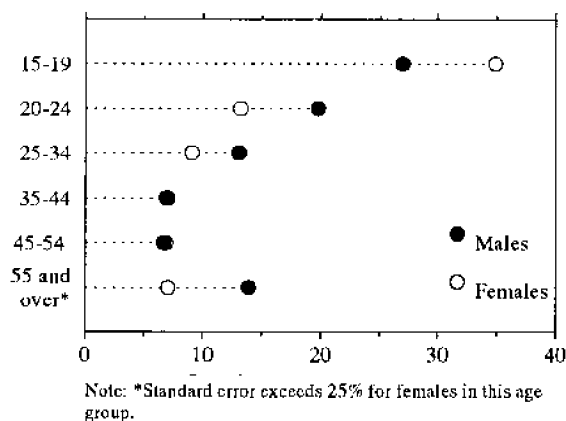


TABLE 13 — UNEMPLOYED PERSONS : DURATION OF UNEMPLOYMENT, SOUTH AUSTRALIA

Month	Number unemployed ('000)							Total	Average duration of unemployment (weeks)	
	Under 4 weeks	4 & under 13 weeks	13 & under 26 weeks	26 & under 39 weeks	39 & under 52 weeks	52 & under 104 weeks	104 weeks & over		Mean	Median
MALES										
1992 —										
Dec.	6.3	7.7	5.7	5.4	4.9	11.6	13.8	54.8	70.9	45
1993 —										
Jan.	6.8	9.9	5.3	5.8	3.2	11.9	15.7	58.0	74.3	43
Feb.	4.7	10.0	6.2	4.1	3.0	10.8	14.4	52.7	74.8	43
Mar.	4.0	9.0	7.3	4.0	3.0	10.3	13.4	50.7	70.7	40
Apr.	3.9	8.5	8.1	4.5	*2.2	11.2	13.1	51.0	73.0	42
May	3.8	7.2	8.6	3.7	2.5	11.3	11.8	48.5	70.5	42
June	4.7	6.4	8.6	4.0	*2.3	11.7	11.4	48.6	72.4	40
July	5.1	6.2	5.9	7.0	2.4	10.6	11.0	47.7	68.8	38
Aug.	3.3	6.2	4.9	8.2	*1.8	10.7	8.8	44.0	62.7	35
Sept.	3.9	6.9	6.2	7.4	2.4	9.8	10.7	47.4	71.7	36
Oct.	4.1	7.4	6.2	5.4	3.7	10.6	11.4	48.7	70.7	41
Nov.	5.6	7.2	8.0	3.4	3.2	8.2	11.9	47.5	68.9	34
Dec.	6.1	6.9	6.5	4.2	2.9	10.0	11.6	48.3	74.4	40
1994 —										
Jan.	6.3	11.5	6.9	6.7	2.7	7.9	12.1	54.1	65.5	26
Feb.	4.4	9.6	5.2	7.3	*2.2	7.5	13.8	50.1	71.1	33
FEMALES										
1992 —										
Dec.	7.8	6.0	2.6	3.2	*2.2	6.0	4.8	32.4	49.6	24
1993 —										
Jan.	4.8	7.7	4.2	3.6	*1.7	5.6	5.3	32.8	50.8	24
Feb.	5.0	8.6	5.2	2.6	*2.1	6.2	5.2	34.9	45.3	21
Mar.	4.4	7.5	3.7	3.4	*1.3	5.7	5.3	31.1	47.2	24
Apr.	5.1	6.8	4.9	2.6	*1.5	4.3	3.9	28.9	40.2	19
May	3.0	4.2	5.3	*2.2	*1.0	4.4	6.2	26.1	59.2	26
June	3.7	4.0	4.2	3.7	*1.4	4.6	4.0	25.3	53.9	25
July	4.1	4.6	4.0	3.7	*1.4	3.1	4.1	25.0	46.9	22
Aug.	4.1	4.2	3.0	4.8	*1.6	3.5	4.8	26.0	54.7	26
Sept.	5.1	3.9	2.9	4.5	*2.0	3.8	5.2	27.4	58.2	28
Oct.	4.8	3.9	2.7	3.9	2.6	5.6	6.4	29.8	64.8	35
Nov.	3.9	5.9	2.6	4.2	2.9	5.0	4.4	28.9	54.8	27
Dec.	6.5	5.5	4.6	3.8	2.7	3.9	4.8	31.8	49.8	21
1994 —										
Jan.	7.6	7.5	3.7	2.7	3.4	4.6	4.1	33.7	35.9	17
Feb.	5.3	9.1	3.6	4.2	*1.6	4.8	4.9	33.6	45.5	18
PERSONS										
1992 —										
Dec.	14.1	13.7	8.2	8.6	7.1	17.6	18.6	87.2	63.1	36
1993 —										
Jan.	11.6	17.6	9.5	9.4	4.9	17.5	21.0	90.8	65.9	32
Feb.	9.7	18.5	11.4	6.8	5.1	17.0	19.6	87.6	63.1	31
Mar.	8.4	16.6	11.1	7.3	4.3	16.0	18.7	81.8	61.8	33
Apr.	8.9	15.4	13.0	7.1	3.7	15.6	17.0	79.9	61.2	28
May	6.7	11.4	13.9	5.9	3.5	15.7	18.0	74.6	66.5	36
June	8.4	10.4	12.7	7.6	3.7	16.2	15.4	73.9	66.1	32
July	9.2	10.8	9.9	10.6	3.8	13.7	15.1	72.7	61.3	29
Aug.	7.4	10.4	8.0	13.0	3.4	14.2	13.6	70.0	59.8	32
Sept.	9.0	10.8	9.1	11.9	4.4	13.6	15.9	74.8	66.7	33
Oct.	8.9	11.3	8.9	9.3	6.3	16.1	17.8	78.6	68.5	39
Nov.	9.5	13.1	10.6	7.6	6.0	13.2	16.4	76.4	63.6	31
Dec.	12.7	12.4	11.1	8.0	5.6	14.0	16.5	80.1	64.7	28
1994 —										
Jan.	13.9	19.0	10.6	9.4	6.1	12.5	16.3	87.8	54.2	25
Feb.	9.7	18.7	8.8	11.5	3.8	12.4	18.7	83.6	60.8	27

TABLE 14 — UNEMPLOYED PERSONS : NUMBER AND RATE BY BIRTHPLACE, SOUTH AUSTRALIA

Month	Unemployed			Unemployment rate		
	Males '000	Females '000	Persons '000	Males per cent	Females per cent	Persons per cent
AUSTRALIA						
1992 —						
Dec.	37.8	24.9	62.7	12.1	10.6	11.5
1993 —						
Jan.	42.1	23.5	65.5	13.6	10.2	12.1
Feb.	36.7	24.5	61.1	11.8	10.4	11.2
Mar.	36.8	22.9	59.7	11.7	9.8	10.9
Apr.	35.4	20.3	55.8	11.4	8.8	10.3
May	37.0	19.3	56.3	11.7	8.3	10.3
June	35.5	18.0	53.5	11.4	7.7	9.8
July	36.4	19.6	56.0	11.8	8.3	10.3
Aug.	31.6	19.4	50.9	10.3	8.5	9.5
Sept.	32.1	20.4	52.5	10.5	8.7	9.8
Oct.	33.3	22.4	55.6	10.9	9.6	10.3
Nov.	33.9	23.3	57.3	11.1	9.9	10.6
Dec.	35.3	25.8	61.2	11.3	10.7	11.0
1994 —						
Jan.	39.2	27.0	66.2	12.7	11.5	12.2
Feb.	36.6	25.9	62.5	11.9	10.9	11.5
MAIN ENGLISH-SPEAKING COUNTRIES (a)						
1992 —						
Dec.	8.9	2.7	11.6	15.6	7.3	12.3
1993 —						
Jan.	7.7	3.5	11.2	13.8	9.2	11.9
Feb.	7.8	4.5	12.3	13.8	11.5	12.9
Mar.	6.1	3.0	9.1	11.7	7.7	10.0
Apr.	8.0	3.1	11.1	14.8	8.3	12.1
May	5.7	2.5	8.2	10.6	6.5	8.9
June	5.9	3.0	8.9	11.0	7.9	9.7
July	4.7	*2.3	7.1	8.9	*6.1	7.7
Aug.	5.3	2.9	8.2	9.5	7.7	8.8
Sept.	6.6	2.5	9.1	11.6	6.9	9.7
Oct.	7.5	2.5	10.0	12.8	7.0	10.6
Nov.	6.7	*1.8	8.6	11.5	*5.0	9.0
Dec.	6.3	2.5	8.8	10.8	6.7	9.2
1994 —						
Jan.	7.5	2.8	10.3	12.5	7.3	10.5
Feb.	7.4	3.6	11.0	12.6	9.5	11.4
OTHER THAN MAIN ENGLISH-SPEAKING COUNTRIES						
1992 —						
Dec.	8.2	4.7	12.9	16.5	15.7	16.2
1993 —						
Jan.	8.2	5.8	14.0	16.7	18.5	17.4
Feb.	8.2	6.0	14.1	16.9	18.6	17.6
Mar.	7.8	5.2	13.0	16.7	17.9	17.1
Apr.	7.6	5.4	13.0	16.4	18.5	17.2
May	5.8	4.4	10.2	13.1	15.5	14.0
June	7.2	4.4	11.5	15.7	15.3	15.6
July	6.6	3.0	9.6	14.5	11.0	13.2
Aug.	7.1	3.8	10.9	16.1	12.9	14.9
Sept.	8.7	4.4	13.2	18.5	14.1	16.7
Oct.	8.0	4.9	12.9	17.3	16.3	16.9
Nov.	6.8	3.7	10.6	14.8	11.8	13.5
Dec.	6.7	3.5	10.1	14.8	11.1	13.3
1994 —						
Jan.	7.3	3.9	11.3	16.0	13.3	14.9
Feb.	6.1	4.0	10.1	14.0	13.4	13.8

(a) Main English speaking countries are United Kingdom, Ireland, Canada, United States of America, New Zealand and South Africa.

TABLE 15 — LABOUR FORCE STATUS OF THE CIVILIAN POPULATION AGED 15 YEARS AND OVER
ADELAIDE STATISTICAL DIVISION

Month	Employed		Unemployed		Labour force '000	Not in labour force '000	Civilian population 15 years and over '000	Unemployment rate per cent	Participation rate per cent
	Full-time workers '000	Total '000	Looking for full-time work '000	Total '000					
MALES									
Feb. 1988	237.2	257.6	25.6	27.3	284.9	109.6	394.6	9.6	72.2
Feb. 1989	251.7	273.3	19.9	21.6	294.9	103.7	398.6	7.3	74.0
Feb. 1990	253.8	275.4	20.8	22.4	297.9	106.0	403.9	7.5	73.8
Feb. 1991	250.1	272.4	29.2	32.2	304.6	104.4	408.9	10.6	74.5
Feb. 1992	233.7	258.7	37.5	41.4	300.2	113.4	413.5	13.8	72.6
1992 —									
Dec.	233.4	260.6	35.5	39.7	300.3	115.7	416.0	13.2	72.2
1993 —									
Jan.	228.8	256.5	38.6	43.4	299.9	116.3	416.3	14.5	72.1
Feb.	231.6	261.1	35.5	40.5	301.6	115.0	416.5	13.4	72.4
Mar.	226.7	258.7	36.1	40.5	299.2	117.6	416.7	13.5	71.8
Apr.	225.1	257.8	37.1	40.3	298.0	119.0	417.0	13.5	71.5
May	230.6	261.2	34.1	37.9	299.1	118.2	417.3	12.7	71.7
June	230.9	257.6	35.4	37.4	295.0	122.5	417.5	12.7	70.6
July	229.8	256.7	36.1	38.3	295.0	122.8	417.8	13.0	70.6
Aug.	225.4	256.8	33.8	35.5	292.3	125.8	418.1	12.2	69.9
Sept.	225.7	258.5	35.8	38.4	296.9	121.5	418.3	12.9	71.0
Oct.	230.1	259.3	35.3	37.8	297.1	121.6	418.6	12.7	71.0
Nov.	229.3	260.8	33.8	37.3	298.1	120.9	419.0	12.5	71.1
Dec.	236.0	266.7	33.6	36.4	303.0	116.2	419.3	12.0	72.3
1994 —									
Jan.	231.2	261.0	38.6	41.4	302.4	117.2	419.6	13.7	72.1
Feb.	232.8	261.3	35.6	39.4	300.7	119.2	419.9	13.1	71.6
MARRIED FEMALES									
Feb. 1988	55.5	115.0	4.5	7.0	122.0	119.9	241.9	5.7	50.4
Feb. 1989	55.8	116.4	4.3	8.1	124.5	122.4	247.0	6.5	50.4
Feb. 1990	64.7	127.4	4.0	7.4	134.8	116.0	250.7	5.5	53.8
Feb. 1991	60.3	123.7	5.9	9.1	132.7	115.1	247.8	6.8	53.6
Feb. 1992	61.8	123.8	5.8	8.8	132.7	122.7	255.4	6.7	51.9
1992 —									
Dec.	61.4	121.2	6.2	8.3	129.5	120.2	249.6	6.4	51.9
1993 —									
Jan.	61.9	117.0	6.9	10.0	127.0	123.9	250.8	7.9	50.6
Feb.	62.5	123.9	7.7	11.1	135.0	118.2	253.2	8.2	53.3
Mar.	60.8	123.7	7.3	9.5	133.2	120.3	253.5	7.2	52.5
Apr.	62.1	123.5	6.1	8.4	132.0	121.3	253.3	6.4	52.1
May	64.1	125.7	4.7	8.4	134.1	119.3	253.5	6.3	52.9
June	63.9	126.3	5.5	8.2	134.5	118.1	252.6	6.1	53.3
July	64.5	126.3	4.7	7.2	133.5	116.6	250.1	5.4	53.4
Aug.	65.7	127.1	5.4	8.1	135.2	116.2	251.3	6.0	53.8
Sept.	64.3	127.5	4.7	7.5	135.0	114.1	249.2	5.6	54.2
Oct.	62.8	124.7	5.1	8.4	133.2	116.4	249.6	6.3	53.4
Nov.	62.0	126.1	4.6	7.8	133.9	116.1	250.0	5.8	53.6
Dec.	65.5	129.1	5.2	7.3	136.5	117.9	254.4	5.4	53.7
1994 —									
Jan.	64.7	124.9	4.4	7.3	132.2	121.0	253.2	5.6	52.2
Feb.	65.4	126.0	6.2	9.2	135.3	121.8	257.0	6.8	52.6

TABLE 15 — LABOUR FORCE STATUS OF THE CIVILIAN POPULATION AGED 15 YEARS AND OVER
ADELAIDE STATISTICAL DIVISION—continued

Month	Employed		Unemployed		Labour force '000	Not in labour force '000	Civilian population 15 years and over '000	Unemployment rate per cent	Participation rate per cent
	Full-time workers '000	Total '000	Looking for full-time work '000	Total '000					
ALL FEMALES									
Feb. 1988	105.8	184.9	15.5	22.1	207.0	211.6	418.6	10.7	49.4
Feb. 1989	110.9	197.7	13.1	20.4	218.1	206.8	424.8	9.4	51.3
Feb. 1990	116.4	205.2	13.2	18.9	224.2	206.2	430.4	8.4	52.1
Feb. 1991	114.2	204.7	15.4	21.3	226.1	209.7	435.8	9.4	51.9
Feb. 1992	110.0	198.7	18.3	25.0	223.7	216.3	440.1	11.2	50.8
1992 —									
Dec.	113.9	203.2	19.9	25.2	228.4	213.9	442.3	11.0	51.6
1993 —									
Jan.	114.4	197.8	18.8	25.8	223.6	219.0	442.6	11.5	50.5
Feb.	111.1	202.9	21.2	28.2	231.1	211.7	442.8	12.2	52.2
Mar.	109.3	204.3	19.3	24.4	228.7	214.3	443.0	10.7	51.6
Apr.	108.4	202.0	16.5	22.1	224.1	219.1	443.3	9.9	50.6
May	110.7	202.9	14.9	21.7	224.6	218.9	443.5	9.7	50.6
June	111.6	205.1	15.1	21.0	226.1	217.7	443.7	9.3	50.9
July	112.6	206.8	13.4	19.4	226.2	217.8	444.0	8.6	50.9
Aug.	109.8	200.8	15.3	21.4	222.2	222.1	444.3	9.6	50.0
Sept.	111.8	204.8	14.2	20.8	225.6	218.9	444.5	9.2	50.7
Oct.	108.8	200.5	15.3	23.2	223.7	221.2	444.8	10.4	50.3
Nov.	110.6	204.2	14.6	22.3	226.5	218.6	445.1	9.8	50.9
Dec.	116.1	208.3	17.0	24.3	232.6	212.8	445.4	10.4	52.2
1994 —									
Jan.	113.2	199.9	18.7	25.9	225.9	219.8	445.7	11.5	50.7
Feb.	114.5	202.7	17.9	25.8	228.5	217.4	446.0	11.3	51.2
PERSONS									
Feb. 1988	343.0	442.5	41.1	49.4	491.9	321.3	813.2	10.0	60.5
Feb. 1989	362.6	471.0	33.0	42.0	513.0	310.5	823.5	8.2	62.3
Feb. 1990	370.2	480.7	33.9	41.4	522.1	312.2	834.2	7.9	62.6
Feb. 1991	364.3	477.1	44.6	53.5	530.6	314.1	844.7	10.1	62.8
Feb. 1992	343.6	457.5	55.9	66.4	523.9	329.7	853.6	12.7	61.4
1992 —									
Dec.	347.3	463.8	55.4	64.9	528.8	329.6	858.4	12.3	61.6
1993 —									
Jan.	343.2	454.4	57.4	69.1	523.5	335.4	858.8	13.2	61.0
Feb.	342.8	464.0	56.7	68.7	532.7	326.6	859.3	12.9	62.0
Mar.	336.1	463.0	55.4	64.9	527.9	331.9	859.8	12.3	61.4
Apr.	333.5	459.8	53.6	62.4	522.2	338.1	860.3	11.9	60.7
May	341.3	464.0	49.0	59.7	523.7	337.1	860.8	11.4	60.8
June	342.5	462.7	50.5	58.3	521.1	340.2	861.3	11.2	60.5
July	342.4	463.5	49.6	57.7	521.2	340.7	861.8	11.1	60.5
Aug.	335.1	457.6	49.1	56.9	514.5	347.9	862.3	11.1	59.7
Sept.	337.5	463.3	50.0	59.2	522.5	340.4	862.9	11.3	60.6
Oct.	338.9	459.8	50.7	61.0	520.7	342.8	863.5	11.7	60.3
Nov.	340.0	465.0	48.4	59.6	524.6	339.5	864.1	11.4	60.7
Dec.	352.2	475.0	50.7	60.6	535.6	329.1	864.7	11.3	61.9
1994 —									
Jan.	344.4	460.9	57.3	67.3	528.2	337.1	865.3	12.7	61.0
Feb.	347.4	464.0	53.5	65.2	529.2	336.6	865.8	12.3	61.1

TABLE 15 — LABOUR FORCE STATUS OF THE CIVILIAN POPULATION AGED 15 YEARS AND OVER—continued
NORTHERN ADELAIDE

Month	Employed		Unemployed		Labour force '000	Not in labour force '000	Unemployment rate per cent	Participation rate per cent
	Full-time workers '000	Total '000	Looking for full- time work '000	Total '000				
MALES								
1992 —								
Dec.	74.1	82.6	11.2	12.6	95.1	27.7	13.2	77.5
1993 —								
Jan.	73.3	80.4	11.7	13.0	93.4	28.8	13.9	76.4
Feb.	73.9	82.9	11.4	12.1	95.1	28.8	12.8	76.8
Mar.	72.3	81.6	12.3	12.6	94.3	29.7	13.4	76.0
Apr.	72.7	81.7	12.5	13.3	95.0	29.9	14.0	76.1
May	74.6	82.4	10.9	12.3	94.7	30.2	13.0	75.8
June	74.5	80.6	10.5	11.4	92.0	30.5	12.4	75.1
July	73.3	78.7	11.1	12.0	90.7	31.5	13.2	74.2
Aug.	73.1	79.0	10.0	10.5	89.5	35.1	11.7	71.8
Sept.	72.1	79.2	10.8	11.4	90.6	32.5	12.6	73.6
Oct.	72.6	78.4	10.1	10.8	89.2	32.4	12.1	73.3
Nov.	72.1	77.8	10.2	11.4	89.2	32.2	12.8	73.5
Dec.	73.4	78.9	10.6	11.3	90.2	33.8	12.5	72.7
1994 —								
Jan.	72.7	78.9	10.7	11.7	90.6	33.5	12.9	73.0
Feb.	73.2	79.3	10.9	12.1	91.4	31.1	13.2	74.6
FEMALES								
1992 —								
Dec.	34.3	62.7	6.4	8.1	70.8	60.2	11.5	54.1
1993 —								
Jan.	33.2	59.5	5.9	8.4	67.9	60.0	12.4	53.1
Feb.	32.8	61.2	6.5	8.7	70.0	59.8	12.5	53.9
Mar.	29.9	60.6	6.1	7.6	68.2	60.6	11.2	52.9
Apr.	31.4	61.5	6.0	7.6	69.1	59.9	11.0	53.5
May	31.9	60.0	4.9	6.8	66.8	63.7	10.2	51.2
June	30.3	58.0	5.4	6.9	64.9	64.2	10.6	50.2
July	32.1	57.7	4.7	6.5	64.2	63.7	10.2	50.2
Aug.	31.3	56.1	4.5	5.9	62.1	68.9	9.5	47.4
Sept.	31.0	56.0	5.5	7.2	63.2	67.5	11.4	48.3
Oct.	30.0	56.4	5.9	8.6	65.0	64.0	13.2	50.4
Nov.	29.5	56.2	5.7	8.3	64.4	64.4	12.9	50.0
Dec.	30.5	57.2	6.6	9.8	66.9	63.0	14.6	51.5
1994 —								
Jan.	30.0	56.1	7.7	10.2	66.4	64.5	15.4	50.7
Feb.	31.1	60.9	7.0	9.1	70.0	62.2	13.0	52.9
PERSONS								
1992 —								
Dec.	108.4	145.3	17.6	20.7	166.0	87.9	12.5	65.4
1993 —								
Jan.	106.5	139.9	17.6	21.4	161.3	88.8	13.3	64.5
Feb.	106.7	144.1	17.9	20.9	165.0	88.6	12.7	65.1
Mar.	102.2	142.2	18.4	20.3	162.5	90.3	12.5	64.3
Apr.	104.1	143.2	18.5	20.9	164.1	89.8	12.7	64.6
May	106.5	142.4	15.8	19.0	161.5	94.0	11.8	63.2
June	104.8	138.6	15.9	18.3	156.9	94.7	11.7	62.4
July	105.4	136.4	15.8	18.5	154.9	95.2	12.0	61.9
Aug.	104.4	135.1	14.5	16.4	151.5	104.0	10.8	59.3
Sept.	103.1	135.2	16.3	18.6	153.8	100.1	12.1	60.6
Oct.	102.6	134.8	16.0	19.4	154.2	96.4	12.6	61.5
Nov.	101.6	134.0	15.9	19.7	153.6	96.6	12.8	61.4
Dec.	103.9	136.1	17.2	21.1	157.2	96.8	13.4	61.9
1994 —								
Jan.	102.7	135.0	18.3	21.9	157.0	98.0	14.0	61.6
Feb.	104.3	140.2	17.9	21.2	161.4	93.3	13.1	63.4

TABLE 15 — LABOUR FORCE STATUS OF THE CIVILIAN POPULATION AGED 15 YEARS AND OVER—continued
WESTERN ADELAIDE

Month	Employed		Unemployed		Labour force '000	Not in labour force '000	Unemployment rate per cent	Participation rate per cent
	Full-time workers '000	Total '000	Looking for full-time work '000	Total '000				
MALES								
1992 —								
Dec.	43.7	49.1	10.3	10.9	60.0	28.5	18.2	67.8
1993 —								
Jan.	42.9	48.2	10.6	11.6	59.8	27.7	19.3	68.3
Feb.	42.0	47.4	9.7	10.8	58.2	27.2	18.5	68.2
Mar.	41.5	47.7	9.5	10.2	57.9	26.7	17.6	68.5
Apr.	41.0	45.3	10.3	11.2	56.4	27.0	19.8	67.7
May	42.5	47.6	10.2	10.7	58.3	25.6	18.3	69.5
June	43.1	47.3	10.3	10.6	57.9	27.8	18.4	67.6
July	41.2	46.8	11.1	11.6	58.4	29.0	19.9	66.8
Aug.	39.0	44.8	9.7	10.1	54.9	30.7	18.4	64.1
Sept.	38.9	45.7	9.9	10.1	55.8	28.8	18.1	65.9
Oct.	40.1	45.4	11.0	11.4	56.8	29.0	20.1	66.2
Nov.	41.5	48.9	9.8	10.7	59.6	28.7	17.9	67.5
Dec.	43.3	50.1	9.2	10.2	60.3	27.8	17.0	68.5
1994 —								
Jan.	44.2	51.4	10.1	10.7	62.1	28.3	17.2	68.7
Feb.	42.2	48.4	9.2	10.7	59.1	28.5	18.0	67.5
FEMALES								
1992 —								
Dec.	20.3	34.8	4.9	5.7	40.5	43.8	14.0	48.0
1993 —								
Jan.	21.0	34.4	4.0	5.0	39.5	46.3	12.8	46.0
Feb.	21.3	35.7	4.6	5.4	41.1	43.8	13.1	48.4
Mar.	22.5	37.0	3.9	5.1	42.2	44.1	12.2	48.9
Apr.	20.7	34.9	3.6	4.9	39.8	45.1	12.3	46.9
May	21.2	36.9	2.5	4.7	41.6	46.4	11.3	47.3
June	20.9	37.8	2.1	4.5	42.3	47.0	10.6	47.4
July	22.2	37.8	*1.9	3.6	41.4	49.0	8.8	45.8
Aug.	22.9	38.3	2.9	3.8	42.1	49.7	9.0	45.9
Sept.	23.3	38.4	2.8	4.9	43.3	48.9	11.2	47.0
Oct.	22.9	36.8	3.2	6.1	42.9	50.7	14.1	45.8
Nov.	23.1	38.8	3.1	5.5	44.3	49.0	12.5	47.5
Dec.	23.8	39.3	2.8	4.7	43.9	51.6	10.6	46.0
1994 —								
Jan.	22.8	36.1	4.5	6.8	42.9	50.8	15.9	45.8
Feb.	24.1	35.7	3.2	5.4	41.1	52.2	13.2	44.1
PERSONS								
1992 —								
Dec.	64.0	83.9	15.3	16.6	100.5	72.3	16.5	58.2
1993 —								
Jan.	63.9	82.7	14.6	16.6	99.3	74.1	16.7	57.3
Feb.	63.3	83.1	14.3	16.2	99.3	71.0	16.3	58.3
Mar.	64.0	84.8	13.3	15.4	100.1	70.8	15.3	58.6
Apr.	61.7	80.2	13.8	16.1	96.2	72.1	16.7	57.2
May	63.7	84.5	12.7	15.3	99.9	71.9	15.4	58.1
June	64.0	85.1	12.5	15.1	100.2	74.8	15.1	57.3
July	63.4	84.5	13.0	15.2	99.8	77.9	15.3	56.1
Aug.	61.9	83.1	12.6	13.9	97.0	80.4	14.3	54.7
Sept.	62.2	84.1	12.7	14.9	99.1	77.7	15.1	56.0
Oct.	63.0	82.3	14.2	17.5	99.7	79.7	17.5	55.6
Nov.	64.6	87.7	12.8	16.2	103.9	77.6	15.6	57.2
Dec.	67.1	89.3	12.0	14.9	104.2	79.3	14.3	56.8
1994 —								
Jan.	67.0	87.4	14.7	17.5	105.0	79.1	16.7	57.0
Feb.	66.3	84.1	12.4	16.1	100.2	80.7	16.1	55.4

TABLE 15 — LABOUR FORCE STATUS OF THE CIVILIAN POPULATION AGED 15 YEARS AND OVER—*continued*
EASTERN ADELAIDE

Month	Employed		Unemployed		Labour force '000	Not in labour force '000	Unemployment rate per cent	Participation rate per cent
	Full-time workers '000	Total '000	Looking for full- time work '000	Total '000				
MALES								
1992 —								
Dec.	46.6	52.8	5.7	6.4	59.3	24.0	10.9	71.2
1993 —								
Jan.	46.4	53.9	6.3	7.0	60.9	23.4	11.5	72.3
Feb.	49.9	55.9	5.0	6.7	62.6	24.6	10.7	71.8
Mar.	47.5	54.1	5.4	6.8	60.9	26.1	11.1	70.0
Apr.	48.4	57.2	4.5	4.9	62.1	25.7	7.9	70.8
May	46.8	54.8	4.3	5.3	60.1	26.5	8.8	69.4
June	44.9	52.0	5.0	5.3	57.3	27.3	9.2	67.7
July	46.8	54.2	4.0	4.4	58.6	25.0	7.5	70.1
Aug.	48.0	57.6	4.8	5.3	62.8	22.4	8.4	73.7
Sept.	46.4	55.0	5.2	6.3	61.3	22.6	10.2	73.1
Oct.	48.0	55.3	5.2	5.6	60.9	22.2	9.2	73.3
Nov.	45.1	52.5	5.3	5.7	58.2	24.5	9.8	70.4
Dec.	48.2	55.8	4.3	4.8	60.6	23.0	7.9	72.5
1994 —								
Jan.	47.6	54.3	6.0	6.3	60.6	22.9	10.4	72.6
Feb.	47.7	54.9	6.1	6.5	61.4	25.1	10.6	71.0
FEMALES								
1992 —								
Dec.	27.3	44.3	3.7	5.0	49.3	44.2	10.2	52.7
1993 —								
Jan.	29.1	45.1	3.4	4.6	49.7	45.3	9.2	52.3
Feb.	27.4	45.3	4.5	6.4	51.7	43.5	12.4	54.3
Mar.	27.6	48.0	2.9	4.1	52.1	44.8	7.9	53.8
Apr.	27.0	48.0	*2.0	3.4	51.4	47.7	6.6	51.9
May	27.7	48.1	2.2	3.2	51.4	45.6	6.3	53.0
June	28.8	48.0	3.1	4.2	52.2	42.8	8.1	54.9
July	27.2	48.8	3.0	4.4	53.2	42.1	8.2	55.8
Aug.	26.0	47.9	3.6	5.2	53.1	41.2	9.8	56.3
Sept.	26.1	47.4	*1.8	2.8	50.1	40.5	5.5	55.3
Oct.	24.5	44.0	2.2	2.5	46.5	44.3	5.3	51.2
Nov.	24.2	43.1	2.9	4.0	47.1	43.3	8.5	52.1
Dec.	27.2	47.1	3.4	4.2	51.3	38.3	8.2	57.2
1994 —								
Jan.	26.4	46.0	2.8	3.6	49.6	42.1	7.3	54.1
Feb.	26.1	45.2	2.4	4.1	49.2	40.1	8.3	55.1
PERSONS								
1992 —								
Dec.	73.9	97.1	9.4	11.5	108.5	68.1	10.6	61.4
1993 —								
Jan.	75.5	99.0	9.7	11.6	110.6	68.7	10.5	61.7
Feb.	77.2	101.2	9.5	13.2	114.4	68.1	11.5	62.7
Mar.	75.1	102.1	8.2	10.9	113.0	70.9	9.6	61.5
Apr.	75.4	105.2	6.5	8.3	113.5	73.4	7.3	60.7
May	74.6	102.9	6.5	8.5	111.5	72.1	7.6	60.7
June	73.7	100.0	8.1	9.5	109.5	70.1	8.7	61.0
July	74.0	103.0	7.1	8.8	111.8	67.1	7.8	62.5
Aug.	74.0	105.5	8.4	10.5	116.0	63.6	9.0	64.6
Sept.	72.5	102.4	7.0	9.0	111.4	63.1	8.1	63.8
Oct.	72.4	99.3	7.4	8.1	107.4	66.5	7.5	61.8
Nov.	69.3	95.6	8.2	9.7	105.3	67.7	9.2	60.9
Dec.	75.4	102.9	7.7	9.0	111.9	61.4	8.0	64.6
1994 —								
Jan.	74.0	100.3	8.8	9.9	110.2	65.0	9.0	62.9
Feb.	73.8	100.1	8.5	10.6	110.7	65.2	9.6	62.9

TABLE 15 — LABOUR FORCE STATUS OF THE CIVILIAN POPULATION AGED 15 YEARS AND OVER—*continued*
SOUTHERN ADELAIDE

Month	Employed		Unemployed		Labour force '000	Not in labour force '000	Unemployment rate per cent	Participation rate per cent
	Full-time workers '000	Total '000	Looking for full-time work '000	Total '000				
MALES								
1992 —								
Dec.	68.9	76.1	8.4	9.8	85.9	35.5	11.4	70.7
1993 —								
Jan.	66.2	74.1	9.9	11.8	85.9	36.4	13.8	70.2
Feb.	65.9	74.9	9.3	10.8	85.7	34.4	12.6	71.4
Mar.	65.5	75.2	9.0	10.8	86.0	35.1	12.6	71.0
Apr.	62.9	73.6	9.9	10.9	84.5	36.5	12.9	69.8
May	66.6	76.3	8.7	9.7	86.0	35.9	11.3	70.6
June	68.4	77.7	9.6	10.0	87.7	36.9	11.4	70.4
July	68.4	77.1	9.9	10.3	87.4	37.3	11.8	70.1
Aug.	65.3	75.4	9.3	9.7	85.1	37.5	11.4	69.4
Sept.	68.4	78.6	9.9	10.7	89.2	37.5	11.9	70.4
Oct.	69.5	80.2	9.1	9.9	90.1	37.9	11.0	70.4
Nov.	70.6	81.5	8.5	9.6	91.1	35.5	10.5	71.9
Dec.	71.2	81.8	9.5	10.0	91.9	31.6	10.9	74.4
1994 —								
Jan.	66.7	76.3	11.8	12.7	89.1	32.6	14.3	73.2
Feb.	69.8	78.7	9.4	10.1	88.8	34.6	11.4	71.9
FEMALES								
1992 —								
Dec.	32.0	61.5	4.8	6.4	67.9	65.7	9.4	50.8
1993 —								
Jan.	31.1	58.8	5.5	7.7	66.5	67.3	11.6	49.7
Feb.	29.6	60.6	5.7	7.7	68.3	64.5	11.2	51.4
Mar.	29.3	58.7	6.5	7.5	66.2	64.8	11.4	50.6
Apr.	29.3	57.6	4.9	6.3	63.9	66.4	9.8	49.0
May	29.8	57.9	5.2	7.0	64.9	63.2	10.8	50.7
June	31.6	61.4	4.5	5.3	66.8	63.7	8.0	51.2
July	31.1	62.5	3.9	4.9	67.3	63.0	7.2	51.6
Aug.	29.6	58.4	4.3	6.5	64.9	62.3	10.0	51.0
Sept.	31.4	63.0	4.1	6.0	69.0	62.0	8.7	52.7
Oct.	31.5	63.2	4.1	6.1	69.3	62.2	8.8	52.7
Nov.	33.9	66.1	2.9	4.5	70.6	62.0	6.3	53.3
Dec.	34.6	64.7	4.3	5.6	70.4	60.0	8.0	54.0
1994 —								
Jan.	34.0	61.8	3.6	5.2	67.0	62.4	7.8	51.8
Feb.	33.2	60.9	5.3	7.2	68.1	62.9	10.6	52.0
PERSONS								
1992 —								
Dec.	101.0	137.5	13.2	16.2	153.7	101.2	10.5	60.3
1993 —								
Jan.	97.3	132.9	15.4	19.5	152.4	103.7	12.8	59.5
Feb.	95.5	135.5	15.0	18.5	154.0	98.9	12.0	60.9
Mar.	94.8	133.9	15.4	18.4	152.3	99.9	12.1	60.4
Apr.	92.3	131.2	14.8	17.1	148.4	102.9	11.5	59.0
May	96.4	134.2	13.9	16.7	150.9	99.1	11.1	60.4
June	100.0	139.1	14.0	15.3	154.5	100.6	9.9	60.6
July	99.6	139.5	13.8	15.2	154.7	100.4	9.8	60.7
Aug.	94.9	133.8	13.6	16.2	150.0	99.9	10.8	60.0
Sept.	99.8	141.6	14.0	16.7	158.2	99.5	10.5	61.4
Oct.	100.9	143.3	13.2	16.0	159.4	100.1	10.1	61.4
Nov.	104.4	147.7	11.4	14.0	161.7	97.5	8.7	62.4
Dec.	105.8	146.6	13.8	15.7	162.3	91.6	9.7	63.9
1994 —								
Jan.	100.7	138.1	15.5	17.9	156.0	95.0	11.5	62.1
Feb.	103.0	139.6	14.7	17.3	156.9	97.5	11.1	61.7

TABLE 15 — LABOUR FORCE STATUS OF THE CIVILIAN POPULATION AGED 15 YEARS AND OVER—*continued*
BALANCE OF SOUTH AUSTRALIA (EXCLUDES ADELAIDE STATISTICAL DIVISION)

Month	Employed		Unemployed		Labour force	Not in labour force	Civilian population 15 years & over	Unemployment rate	Participation rate
	Full-time workers	Total	Looking for full-time work	Total					
	'000	'000	'000	'000	'000	'000	'000	per cent	per cent
MALES									
1992 —									
Dec.	92.7	102.0	14.5	15.1	117.1	34.2	151.3	12.9	77.4
1993 —									
Jan.	91.2	100.8	13.7	14.6	115.4	35.9	151.3	12.7	76.3
Feb.	91.0	101.7	11.2	12.2	113.9	37.4	151.3	10.7	75.3
Mar.	93.9	103.5	9.8	10.2	113.7	37.5	151.3	9.0	75.2
Apr.	93.1	103.2	9.7	10.7	114.0	37.3	151.3	9.4	75.3
May	95.9	105.5	10.1	10.6	116.1	35.1	151.2	9.1	76.8
June	94.3	104.4	10.4	11.2	115.6	35.6	151.2	9.7	76.4
July	92.7	102.8	8.9	9.4	112.2	39.0	151.2	8.4	74.2
Aug.	91.6	103.7	7.5	8.4	112.1	39.1	151.2	7.5	74.1
Sept.	92.4	102.2	8.3	9.0	111.2	40.0	151.2	8.1	73.5
Oct.	91.6	101.9	10.2	11.0	112.9	38.3	151.2	9.7	74.6
Nov.	91.0	101.9	9.6	10.2	112.1	39.1	151.2	9.1	74.1
Dec.	90.1	101.2	11.1	11.9	113.1	38.1	151.2	10.5	74.8
1994 —									
Jan.	89.3	100.4	12.2	12.7	113.1	38.2	151.2	11.2	74.8
Feb.	89.4	98.3	10.4	10.7	109.0	42.3	151.2	9.8	72.1
FEMALES									
1992 —									
Dec.	31.9	67.9	4.7	7.2	75.1	71.4	146.4	9.6	51.3
1993 —									
Jan.	32.4	69.0	5.2	7.0	76.0	70.4	146.4	9.2	51.9
Feb.	33.9	68.8	4.3	6.7	75.5	70.9	146.4	8.8	51.6
Mar.	33.1	67.8	4.5	6.7	74.5	72.0	146.4	9.0	50.9
Apr.	31.6	68.0	3.7	6.7	74.7	71.7	146.4	9.0	51.0
May	33.4	68.4	3.3	4.4	72.8	73.7	146.5	6.1	49.7
June	36.3	68.8	3.2	4.4	73.2	73.3	146.5	5.9	50.0
July	36.5	69.5	4.5	5.6	75.1	71.3	146.5	7.4	51.3
Aug.	35.8	69.1	2.9	4.7	73.8	72.7	146.5	6.3	50.4
Sept.	36.4	70.3	4.8	6.6	76.9	69.6	146.5	8.6	52.5
Oct.	35.4	69.2	4.4	6.6	75.8	70.6	146.5	8.7	51.8
Nov.	35.2	69.5	5.4	6.6	76.1	70.4	146.5	8.6	52.0
Dec.	37.0	70.7	5.1	7.6	78.3	68.2	146.5	9.7	53.5
1994 —									
Jan.	32.6	68.4	5.0	7.7	76.1	70.4	146.5	10.1	52.0
Feb.	34.7	69.6	5.9	7.7	77.3	69.1	146.5	10.0	52.8
PERSONS									
1992 —									
Dec.	124.6	169.9	19.2	22.3	192.2	105.6	297.7	11.6	64.5
1993 —									
Jan.	123.6	169.8	18.9	21.6	191.4	106.3	297.7	11.3	64.3
Feb.	124.9	170.5	15.6	18.8	189.4	108.3	297.7	9.9	63.6
Mar.	127.0	171.3	14.3	16.9	188.2	109.5	297.7	9.0	63.2
Apr.	124.7	171.2	13.4	17.5	188.7	109.0	297.7	9.3	63.4
May	129.3	173.9	13.4	15.0	188.9	108.8	297.7	7.9	63.5
June	130.6	173.2	13.6	15.6	188.8	108.9	297.7	8.2	63.4
July	129.2	172.3	13.4	15.0	187.3	110.4	297.7	8.0	62.9
Aug.	127.4	172.8	10.4	13.1	185.9	111.8	297.7	7.0	62.4
Sept.	128.8	172.5	13.1	15.6	188.1	109.6	297.7	8.3	63.2
Oct.	127.0	171.1	14.6	17.6	188.7	109.0	297.7	9.3	63.4
Nov.	126.3	171.4	14.9	16.8	188.2	109.5	297.7	8.9	63.2
Dec.	127.0	171.9	16.2	19.5	191.4	106.3	297.7	10.2	64.3
1994 —									
Jan.	121.9	168.8	17.2	20.4	189.2	108.5	297.7	10.8	63.5
Feb.	124.1	167.9	16.3	18.4	186.3	111.4	297.7	9.9	62.6

TABLE 15 — LABOUR FORCE STATUS OF THE CIVILIAN POPULATION AGED 15 YEARS AND OVER—continued
NORTHERN AND WESTERN SOUTH AUSTRALIA (a)

Month	Employed		Unemployed		Labour force '000	Not in labour force '000	Unemployment rate per cent	Participation rate per cent
	Full-time workers '000	Total '000	Looking for full-time work '000	Total '000				
MALES								
1992 —								
Dec.	34.8	38.9	7.3	7.5	46.4	15.2	16.2	75.3
1993 —								
Jan.	34.9	38.7	7.4	8.0	46.7	15.5	17.1	75.1
Feb.	35.2	39.2	5.2	5.3	44.5	17.6	12.0	71.6
Mar.	37.7	41.3	4.4	4.8	46.1	14.6	10.3	75.9
Apr.	38.0	41.9	4.7	5.6	47.5	15.0	11.7	76.0
May	41.4	45.2	5.2	5.5	50.7	13.5	10.8	79.0
June	41.9	46.6	5.6	6.1	52.6	12.9	11.5	80.3
July	42.0	46.3	4.4	4.6	50.9	13.2	9.0	79.4
Aug.	39.8	44.6	4.8	5.3	49.9	12.7	10.7	79.8
Sept.	40.9	44.6	5.1	5.1	49.7	13.0	10.3	79.2
Oct.	38.9	43.0	6.1	6.5	49.6	13.5	13.2	78.6
Nov.	38.6	43.4	5.2	5.5	48.9	15.1	11.2	76.4
Dec.	37.5	42.1	5.7	6.2	48.3	14.4	12.9	77.1
1994 —								
Jan.	36.5	42.3	5.7	5.9	48.2	15.7	12.2	75.4
Feb.	36.1	39.7	5.3	5.5	45.2	19.4	12.2	70.0
FEMALES								
1992 —								
Dec.	11.6	26.2	*1.9	2.5	28.8	32.4	8.8	47.0
1993 —								
Jan.	11.6	25.2	*1.5	*1.8	27.0	33.1	*6.7	44.9
Feb.	13.4	25.7	*1.2	*1.9	27.7	34.3	*6.9	44.6
Mar.	12.9	26.8	*0.9	*1.7	28.4	31.6	*5.9	47.3
Apr.	11.8	27.2	*1.3	*2.1	29.3	31.2	*7.2	48.4
May	14.4	28.2	*0.9	*1.1	29.3	30.3	*3.6	49.1
June	16.3	29.4	*1.1	*1.7	31.2	29.9	*5.5	51.0
July	16.9	30.1	*1.6	*2.3	32.4	29.1	*7.1	52.6
Aug.	16.2	28.8	*1.2	*1.7	30.5	28.1	*5.5	52.1
Sept.	15.8	29.3	*1.5	*2.2	31.5	25.7	*6.8	55.1
Oct.	16.0	30.2	*1.1	2.4	32.6	25.8	7.2	55.8
Nov.	14.7	29.8	*2.2	2.8	32.6	25.2	8.7	56.4
Dec.	15.9	29.0	2.5	3.4	32.4	23.6	10.5	57.9
1994 —								
Jan.	15.0	28.0	*1.5	3.0	30.9	26.1	9.6	54.3
Feb.	16.0	29.4	*1.9	2.4	31.8	26.9	7.5	54.2
PERSONS								
1992 —								
Dec.	46.4	65.1	9.3	10.1	75.1	47.7	13.4	61.2
1993 —								
Jan.	46.5	63.9	8.9	9.8	73.7	48.5	13.3	60.3
Feb.	48.6	64.9	6.4	7.2	72.2	51.9	10.0	58.2
Mar.	50.6	68.1	5.4	6.4	74.5	46.2	8.6	61.7
Apr.	49.9	69.1	6.0	7.7	76.8	46.2	10.0	62.4
May	55.8	73.4	6.1	6.5	79.9	43.8	8.2	64.6
June	58.2	76.0	6.7	7.8	83.8	42.9	9.3	66.1
July	58.9	76.4	6.0	6.9	83.3	42.3	8.3	66.3
Aug.	56.1	73.5	6.0	7.0	80.5	40.7	8.7	66.4
Sept.	56.7	74.0	6.6	7.3	81.2	38.7	9.0	67.7
Oct.	54.9	73.3	7.2	8.9	82.2	39.3	10.8	67.6
Nov.	53.4	73.2	7.5	8.3	81.5	40.2	10.2	66.9
Dec.	53.4	71.1	8.2	9.6	80.7	37.9	11.9	68.0
1994 —								
Jan.	51.4	70.3	7.2	8.8	79.2	41.8	11.2	65.4
Feb.	52.1	69.1	7.2	7.9	77.0	46.3	10.2	62.4

TABLE 15 — LABOUR FORCE STATUS OF THE CIVILIAN POPULATION AGED 15 YEARS AND OVER—*continued*
SOUTHERN AND EASTERN SOUTH AUSTRALIA (b)

Month	Employed		Unemployed		Labour force '000	Not in labour force '000	Unemployment rate per cent	Participation rate per cent
	Full-time workers '000	Total '000	Looking for full-time work '000	Total '000				
MALES								
1992 —								
Dec.	57.9	63.1	7.1	7.6	70.7	19.0	10.7	78.8
1993 —								
Jan.	56.3	62.1	6.3	6.6	68.7	20.4	9.6	77.1
Feb.	55.8	62.5	6.0	6.8	69.4	19.8	9.8	77.8
Mar.	56.2	62.2	5.4	5.4	67.6	22.9	8.0	74.7
Apr.	55.0	61.3	5.0	5.2	66.5	22.3	7.8	74.9
May	54.5	60.4	4.9	5.1	65.5	21.6	7.8	75.2
June	52.4	57.9	4.8	5.1	63.0	22.7	8.2	73.5
July	50.7	56.5	4.5	4.8	61.3	25.8	7.9	70.3
Aug.	51.7	59.0	2.7	3.1	62.2	26.4	5.0	70.2
Sept.	51.5	57.6	3.2	3.9	61.4	27.0	6.3	69.5
Oct.	52.6	58.8	4.1	4.4	63.3	24.8	7.0	71.8
Nov.	52.4	58.4	4.3	4.8	63.2	24.0	7.6	72.5
Dec.	52.6	59.1	5.3	5.7	64.8	23.8	8.8	73.2
1994 —								
Jan.	52.9	58.0	6.5	6.8	64.8	22.5	10.5	74.3
Feb.	53.3	58.6	5.1	5.2	63.8	22.9	8.2	73.6
FEMALES								
1992 —								
Dec.	20.3	41.7	2.8	4.6	46.3	38.9	10.0	54.3
1993 —								
Jan.	20.8	43.8	3.7	5.2	49.0	37.3	10.6	56.8
Feb.	20.5	43.1	3.1	4.8	47.9	36.7	10.0	56.6
Mar.	20.2	41.1	3.5	5.0	46.1	40.4	10.9	53.3
Apr.	19.8	40.8	2.4	4.6	45.4	40.5	10.2	52.9
May	19.0	40.2	2.4	3.4	43.5	43.3	7.7	50.1
June	20.0	39.4	2.1	2.6	42.0	43.3	6.2	49.2
July	19.6	39.5	2.9	3.3	42.7	42.2	7.6	50.3
Aug.	19.6	40.3	*1.8	3.0	43.3	44.6	6.9	49.2
Sept.	20.6	40.9	3.4	4.5	45.4	43.9	9.8	50.8
Oct.	19.4	39.0	3.3	4.2	43.2	44.8	9.8	49.1
Nov.	20.5	39.8	3.2	3.8	43.5	45.2	8.6	49.1
Dec.	21.0	41.7	2.6	4.2	45.9	44.6	9.1	50.7
1994 —								
Jan.	17.7	40.4	3.5	4.8	45.2	44.3	10.5	50.5
Feb.	18.7	40.2	3.9	5.3	45.5	42.2	11.7	51.9
PERSONS								
1992 —								
Dec.	78.2	104.8	9.9	12.2	117.0	57.9	10.4	66.9
1993 —								
Jan.	77.1	105.9	10.0	11.8	117.7	57.8	10.0	67.1
Feb.	76.2	105.6	9.2	11.6	117.2	56.4	9.9	67.5
Mar.	76.4	103.3	9.0	10.4	113.7	63.3	9.2	64.2
Apr.	74.8	102.1	7.4	9.8	111.9	62.8	8.8	64.0
May	73.5	100.5	7.3	8.4	109.0	65.0	7.7	62.6
June	72.5	97.2	6.9	7.8	105.0	66.0	7.4	61.4
July	70.3	95.9	7.4	8.1	104.0	68.1	7.8	60.5
Aug.	71.3	99.3	4.5	6.1	105.4	71.1	5.8	59.7
Sept.	72.1	98.5	6.5	8.3	106.8	70.9	7.8	60.1
Oct.	72.1	97.8	7.4	8.7	106.5	69.7	8.2	60.5
Nov.	72.9	98.2	7.5	8.5	106.7	69.2	8.0	60.7
Dec.	73.6	100.8	7.9	9.9	110.7	68.4	8.9	61.8
1994 —								
Jan.	70.5	98.5	10.0	11.6	110.0	66.8	10.5	62.2
Feb.	72.0	98.8	9.0	10.5	109.4	65.1	9.6	62.7

(a) Comprises Yorke and Lower North, Northern and Eyre Statistical Divisions. (b) Comprises Outer Adelaide, Murray Lands and South East Statistical Divisions.

TABLE 16 — EMPLOYED PERSONS : OCCUPATION (a), REGIONS OF SOUTH AUSTRALIA ('000)

Occupation (a)	1992		1993		1994	
	Nov.	Feb.	May	Aug.	Nov.	Feb.
SOUTH AUSTRALIA						
Managers and administrators	76.2	76.6	83.6	79.7	81.0	88.2
Professionals	76.6	78.9	88.1	89.6	84.8	81.1
Para-professionals	41.9	40.8	40.7	40.5	42.1	39.3
Tradespersons	95.3	92.4	93.9	94.6	93.3	94.7
Clerks	93.3	90.9	97.4	94.5	95.7	90.2
Salespersons and personal service workers	105.7	111.3	97.7	91.3	94.3	96.2
Plant and machine operators, and drivers	41.6	44.2	43.4	44.7	43.5	42.3
Labourers and related workers	101.3	99.4	93.2	95.5	101.8	100.0
<i>Total</i>	<i>632.0</i>	<i>634.5</i>	<i>638.0</i>	<i>630.3</i>	<i>636.4</i>	<i>631.9</i>
ADELAIDE STATISTICAL DIVISION						
Managers and administrators	40.2	36.0	41.0	40.0	40.9	46.4
Professionals	61.1	63.0	70.3	72.0	68.3	67.3
Para-professionals	31.8	29.5	31.8	31.3	34.0	33.2
Tradespersons	73.2	70.9	68.1	67.5	67.9	72.5
Clerks	77.4	75.5	80.0	76.0	75.1	70.2
Salespersons and personal service workers	83.1	89.1	80.0	75.3	75.0	76.9
Plant and machine operators, and drivers	28.9	31.7	31.8	30.2	33.2	28.3
Labourers and related workers	68.3	68.4	61.1	65.2	70.5	69.3
<i>Total</i>	<i>464.0</i>	<i>464.0</i>	<i>464.0</i>	<i>457.6</i>	<i>465.0</i>	<i>464.0</i>
NORTHERN ADELAIDE						
Managers and administrators	11.7	9.1	9.8	7.6	8.0	10.4
Professionals	10.1	12.6	12.6	13.1	10.3	11.7
Para-professionals	9.5	9.3	8.3	7.1	9.8	10.7
Tradespersons	26.2	24.3	25.4	26.7	24.7	26.3
Clerks	23.8	23.8	26.4	23.7	22.9	22.3
Salespersons and personal service workers	25.6	26.4	21.4	19.9	18.3	21.9
Plant and machine operators, and drivers	13.2	13.5	14.0	12.2	13.3	11.3
Labourers and related workers	25.4	25.3	24.4	24.9	26.7	25.7
<i>Total</i>	<i>145.5</i>	<i>144.1</i>	<i>142.4</i>	<i>135.1</i>	<i>134.0</i>	<i>140.2</i>
WESTERN ADELAIDE						
Managers and administrators	7.4	5.5	4.9	5.2	5.2	6.3
Professionals	10.4	9.0	10.1	11.7	11.2	8.2
Para-professionals	5.3	4.3	7.2	6.1	7.0	6.1
Tradespersons	12.4	12.6	13.2	11.2	12.1	13.5
Clerks	14.5	13.8	15.2	15.3	14.2	13.4
Salespersons and personal service workers	12.8	14.2	14.0	14.8	15.7	14.7
Plant and machine operators, and drivers	6.7	8.8	8.3	6.4	7.9	7.4
Labourers and related workers	15.4	14.9	11.6	12.4	14.4	14.4
<i>Total</i>	<i>84.9</i>	<i>83.1</i>	<i>84.5</i>	<i>83.1</i>	<i>87.7</i>	<i>84.1</i>
EASTERN ADELAIDE						
Managers and administrators	9.9	10.7	11.6	13.7	11.7	14.9
Professionals	23.9	23.2	27.6	27.5	24.6	25.4
Para-professionals	7.5	6.6	7.2	7.4	5.8	6.3
Tradespersons	13.2	13.7	10.9	10.3	10.1	10.9
Clerks	16.9	15.2	15.2	16.2	17.4	15.9
Salespersons and personal service workers	18.0	17.9	18.1	16.6	14.4	14.8
Plant and machine operators, and drivers	3.5	3.2	3.6	4.4	4.0	3.7
Labourers and related workers	9.6	10.6	8.8	9.4	7.6	8.2
<i>Total</i>	<i>102.5</i>	<i>101.2</i>	<i>102.9</i>	<i>105.5</i>	<i>95.6</i>	<i>100.1</i>

TABLE 16 — EMPLOYED PERSONS : OCCUPATION (a), REGIONS OF SOUTH AUSTRALIA—continued
(*000)

Occupation (a)	1992		1993			1994	
	Nov.	Feb.	May	Aug.	Nov.	Feb.	
SOUTHERN ADELAIDE							
Managers and administrators	11.1	10.8	14.6	13.5	16.1	14.8	
Professionals	16.6	18.2	20.0	19.7	22.2	22.0	
Para-professionals	9.5	9.3	9.0	10.6	11.4	10.1	
Tradespersons	21.4	20.2	18.5	19.3	21.0	21.8	
Clerks	22.2	22.7	23.2	20.8	20.6	18.6	
Salespersons and personal service workers	26.7	30.6	26.4	23.9	26.6	25.4	
Plant and machine operators, and drivers	5.5	6.1	5.9	7.2	8.0	5.8	
Labourers and related workers	18.0	17.5	16.4	18.7	21.7	21.1	
<i>Total</i>	<i>131.1</i>	<i>135.5</i>	<i>134.2</i>	<i>133.8</i>	<i>147.7</i>	<i>139.6</i>	
BALANCE OF SOUTH AUSTRALIA							
Managers and administrators	36.1	40.6	42.6	39.7	40.0	41.8	
Professionals	15.5	15.9	17.8	17.5	16.4	13.8	
Para-professionals	10.1	11.3	8.9	9.2	8.0	6.1	
Tradespersons	22.1	21.5	25.8	27.0	25.4	22.3	
Clerks	15.9	15.4	17.5	18.5	20.6	19.9	
Salespersons and personal service workers	22.6	22.2	17.7	16.0	19.3	19.3	
Plant and machine operators, and drivers	12.7	12.6	11.6	14.5	10.3	14.0	
Labourers and related workers	33.0	31.0	32.0	30.3	31.3	30.7	
<i>Total</i>	<i>168.0</i>	<i>170.5</i>	<i>173.9</i>	<i>172.8</i>	<i>171.4</i>	<i>167.9</i>	
NORTHERN AND WESTERN SOUTH AUSTRALIA (b)							
Managers and administrators	15.6	16.8	19.3	16.1	15.4	17.5	
Professionals	5.9	6.9	7.9	8.0	7.2	6.3	
Para-professionals	3.1	4.1	3.5	3.8	3.8	2.8	
Tradespersons	7.2	7.9	10.4	11.9	10.6	8.2	
Clerks	6.3	6.1	7.3	8.6	9.4	8.4	
Salespersons and personal service workers	5.8	7.1	6.9	7.3	9.9	9.6	
Plant and machine operators, and drivers	3.4	3.3	4.0	5.4	4.3	5.3	
Labourers and related workers	12.7	12.7	14.1	12.3	12.5	11.0	
<i>Total</i>	<i>60.0</i>	<i>64.9</i>	<i>73.4</i>	<i>73.5</i>	<i>73.2</i>	<i>69.1</i>	
SOUTHERN AND EASTERN SOUTH AUSTRALIA (c)							
Managers and administrators	20.5	23.8	23.4	23.6	24.7	24.4	
Professionals	9.6	9.0	9.9	9.6	9.2	7.5	
Para-professionals	6.9	7.2	5.3	5.4	4.2	3.3	
Tradespersons	14.9	13.6	15.4	15.1	14.8	14.0	
Clerks	9.5	9.3	10.2	9.9	11.2	11.5	
Salespersons and personal service workers	16.8	15.0	10.8	8.7	9.4	9.7	
Plant and machine operators, and drivers	9.4	9.3	7.6	9.1	6.0	8.8	
Labourers and related workers	20.3	18.3	17.9	18.0	18.7	19.7	
<i>Total</i>	<i>108.0</i>	<i>105.6</i>	<i>100.5</i>	<i>99.3</i>	<i>98.2</i>	<i>98.8</i>	

(a) Classified according to the Australian Standard Classification of Occupations (ASCO). (b) Comprises Yorke and Lower North, Northern and Jyre Statistical Divisions.
(c) Comprises Outer Adelaide, Murray Lands and South East Statistical Divisions.

TABLE 17 — EMPLOYED PERSONS : INDUSTRY, REGIONS OF SOUTH AUSTRALIA
(^{'000})

Industry	1992		1993		1994	
	Nov.	Feb.	May	Aug.	Nov.	Feb.
SOUTH AUSTRALIA						
Agriculture, forestry, fishing and hunting	50.9	51.1	52.0	47.7	48.4	48.8
Mining	4.4	5.3	5.1	5.2	4.2	4.0
Manufacturing	95.6	96.2	96.1	93.0	94.4	94.7
Electricity, gas and water	8.0	9.0	7.8	7.3	6.9	7.5
Construction	37.4	38.9	38.9	39.6	39.8	30.9
Wholesale and retail trade	128.1	128.9	124.4	123.1	128.0	136.8
Transport and storage	25.7	25.4	24.4	28.6	28.7	26.7
Communication	9.7	9.2	9.9	8.2	7.4	8.9
Finance, property and business services	58.6	57.8	56.2	62.3	63.5	60.9
Public administration and defence	23.7	23.2	25.5	22.0	19.7	20.3
Community services (a)	138.9	140.5	150.5	145.6	148.8	141.4
Recreation, personal and other services	51.0	48.9	47.1	47.7	46.6	51.1
<i>Total</i>	<i>632.0</i>	<i>634.5</i>	<i>633.0</i>	<i>630.3</i>	<i>636.4</i>	<i>631.9</i>
ADELAIDE STATISTICAL DIVISION						
Agriculture, forestry, fishing and hunting	5.3	6.4	7.0	6.7	6.6	7.4
Mining	*2.3	3.0	3.4	2.8	*1.9	*2.1
Manufacturing	74.8	76.2	72.5	69.7	70.0	71.2
Electricity, gas and water	5.7	6.2	5.4	5.6	5.5	6.1
Construction	28.8	29.1	28.6	26.9	28.5	24.1
Wholesale and retail trade	99.6	101.4	97.8	96.3	99.4	106.4
Transport and storage	20.4	18.6	19.3	20.7	21.5	18.3
Communication	7.3	7.1	7.4	5.9	5.9	5.9
Finance, property and business services	50.7	48.4	47.5	52.9	53.9	51.6
Public administration and defence	19.7	18.7	20.4	16.8	16.0	16.5
Community services (a)	109.0	110.1	119.6	116.3	120.4	114.0
Recreation, personal and other services	40.3	38.9	35.3	36.9	35.3	40.5
<i>Total</i>	<i>464.0</i>	<i>464.0</i>	<i>464.0</i>	<i>457.6</i>	<i>465.0</i>	<i>464.0</i>
NORTHERN ADELAIDE						
Agriculture, forestry, fishing and hunting	3.9	3.0	2.6	2.3	2.7	3.5
Mining	*0.9	*0.9	*1.6	*0.9	*0.4	*0.4
Manufacturing	28.8	29.0	27.7	25.7	24.3	27.3
Electricity, gas and water	*1.7	*1.6	2.0	2.1	2.1	2.3
Construction	9.9	9.7	9.3	9.3	9.5	9.2
Wholesale and retail trade	31.2	29.8	29.5	29.1	29.0	32.8
Transport and storage	8.1	7.0	8.6	7.9	7.1	4.8
Communication	3.5	3.3	3.7	2.7	2.4	*1.7
Finance, property and business services	11.7	13.5	12.2	12.0	12.5	12.8
Public administration and defence	6.8	6.6	7.2	5.8	5.7	4.3
Community services (a)	29.7	29.8	29.6	29.7	29.5	30.6
Recreation, personal and other services	9.5	10.0	8.5	7.6	8.9	10.6
<i>Total</i>	<i>145.5</i>	<i>144.1</i>	<i>142.4</i>	<i>135.1</i>	<i>134.0</i>	<i>140.2</i>

TABLE 17 — EMPLOYED PERSONS : INDUSTRY, REGIONS OF SOUTH AUSTRALIA—*continued*
(’000)

Industry	1992		1993			1994	
	Nov.	Feb.	May	Aug.	Nov.	Feb.	
WESTERN ADELAIDE							
Agriculture, forestry, fishing and hunting	*0.3	*0.4	*0.5	*0.5	*0.6	*0.3	
Mining	*0.4	*0.7	*0.8	*0.6	*0.3	*0.3	
Manufacturing	16.9	17.6	15.8	14.8	17.0	16.1	
Electricity, gas and water	*1.7	*1.7	*0.9	*1.1	*1.2	*1.3	
Construction	4.7	4.1	4.7	2.8	4.8	3.7	
Wholesale and retail trade	18.3	17.9	15.6	16.4	19.2	22.1	
Transport and storage	4.0	4.5	3.5	4.8	5.5	5.1	
Communication	*1.0	*0.8	*1.2	*1.0	*0.9	*1.1	
Finance, property and business services	7.3	6.4	7.5	9.7	10.5	9.5	
Public administration and defence	3.2	3.7	4.0	3.0	2.4	2.9	
Community services (a)	19.2	15.6	21.1	19.5	19.1	15.4	
Recreation, personal and other services	7.9	9.6	9.0	9.1	6.3	6.2	
<i>Total</i>	84.9	83.1	84.5	83.1	87.7	84.1	
EASTERN ADELAIDE							
Agriculture, forestry, fishing and hunting	*0.5	*0.6	*1.1	*1.2	*0.7	*0.8	
Mining	*0.5	*0.5	*0.2	*0.7	*0.8	*0.5	
Manufacturing	10.3	8.9	9.2	9.4	7.3	7.8	
Electricity, gas and water	*1.5	*1.5	*1.2	*1.5	*1.0	*1.5	
Construction	5.2	7.2	6.5	5.6	5.6	5.2	
Wholesale and retail trade	18.3	21.8	20.9	19.4	18.2	21.6	
Transport and storage	3.5	2.3	2.2	3.3	3.1	3.4	
Communication	*0.9	*0.7	*1.2	*1.3	*0.6	*0.9	
Finance, property and business services	15.1	14.0	13.5	16.4	14.8	14.4	
Public administration and defence	4.4	3.8	4.1	3.8	3.1	4.0	
Community services (a)	29.3	29.9	34.0	31.6	30.4	29.5	
Recreation, personal and other services	13.0	9.9	8.8	11.3	10.1	10.5	
<i>Total</i>	102.5	101.2	102.9	105.5	95.6	100.1	
SOUTHERN ADELAIDE							
Agriculture, forestry, fishing and hunting	*0.7	2.4	2.8	2.8	2.5	2.9	
Mining	*0.5	*0.9	*0.9	*0.6	*0.5	*0.9	
Manufacturing	18.8	20.7	19.8	19.9	21.4	20.0	
Electricity, gas and water	*0.8	*1.3	*1.2	*0.9	*1.2	*1.0	
Construction	9.1	8.2	8.2	9.2	8.6	6.0	
Wholesale and retail trade	31.8	31.9	31.7	31.4	33.1	29.9	
Transport and storage	4.8	4.9	5.0	4.7	5.7	5.0	
Communication	2.0	2.3	*1.2	*0.9	2.0	2.2	
Finance, property and business services	16.5	14.4	14.2	14.8	16.2	14.8	
Public administration and defence	5.3	4.5	5.1	4.2	4.9	5.2	
Community services (a)	30.9	34.7	34.9	35.5	41.5	38.5	
Recreation, personal and other services	9.9	9.4	9.0	8.9	10.1	13.2	
<i>Total</i>	131.1	135.5	134.2	133.8	147.7	139.6	

TABLE 17 — EMPLOYED PERSONS : INDUSTRY, REGIONS OF SOUTH AUSTRALIA—continued
(*000)

Industry	1992		1993			1994	
	Nov.	Feb.	May	Aug.	Nov.	Feb.	
BALANCE OF SOUTH AUSTRALIA							
Agriculture, forestry, fishing and hunting	45.6	44.7	45.0	41.0	41.8	41.4	
Mining	*2.1	2.4	*1.7	2.4	*2.3	*1.9	
Manufacturing	20.8	20.0	23.6	23.3	24.4	23.5	
Electricity, gas and water	*2.3	2.8	2.4	*1.7	*1.4	*1.3	
Construction	8.6	9.8	10.2	12.8	11.3	6.8	
Wholesale and retail trade	28.4	27.5	26.6	26.9	28.6	30.5	
Transport and storage	5.2	6.8	5.1	7.8	7.3	8.4	
Communication	2.4	*2.2	2.5	*2.2	*1.5	3.0	
Finance, property and business services	7.9	9.4	8.8	9.3	9.7	9.2	
Public administration and defence	4.0	4.5	5.1	5.2	3.7	3.8	
Community services (a)	29.8	30.5	31.0	29.3	28.4	27.4	
Recreation, personal and other services	10.7	10.0	11.8	10.9	11.3	10.6	
<i>Total</i>	<i>168.0</i>	<i>170.5</i>	<i>173.9</i>	<i>172.8</i>	<i>171.4</i>	<i>167.9</i>	
NORTHERN AND WESTERN SOUTH AUSTRALIA (b)							
Agriculture, forestry, fishing and hunting	19.1	18.3	20.6	16.4	14.6	14.9	
Mining	*1.5	*2.0	*1.5	2.4	*2.3	*1.4	
Manufacturing	5.1	8.0	10.0	9.4	9.6	8.2	
Electricity, gas and water	*1.0	*0.8	*1.2	*0.6	*0.6	*0.3	
Construction	3.0	3.1	3.0	4.8	4.5	2.4	
Wholesale and retail trade	8.8	8.5	11.3	10.9	11.9	11.6	
Transport and storage	*2.1	2.6	*1.9	3.2	3.5	4.3	
Communication	*0.4	*0.8	*0.9	*0.8	*0.6	*1.3	
Finance, property and business services	2.4	3.3	3.4	4.6	4.4	3.2	
Public administration and defence	*1.2	*1.1	*1.5	*2.2	*2.0	*1.5	
Community services (a)	12.0	13.1	13.3	13.0	13.8	14.4	
Recreation, personal and other services	3.4	3.4	4.8	5.3	5.4	5.6	
<i>Total</i>	<i>60.0</i>	<i>64.9</i>	<i>73.4</i>	<i>73.5</i>	<i>73.2</i>	<i>69.1</i>	
SOUTHERN AND EASTERN SOUTH AUSTRALIA (c)							
Agriculture, forestry, fishing and hunting	26.4	26.4	24.4	24.6	27.2	26.5	
Mining	*0.6	*0.3	*0.2	*0.0	*0.0	*0.4	
Manufacturing	15.7	12.0	13.6	13.8	14.8	15.4	
Electricity, gas and water	*1.3	2.1	*1.3	*1.1	*0.8	*1.1	
Construction	5.6	6.6	7.2	8.0	6.7	4.4	
Wholesale and retail trade	19.6	19.0	15.3	16.0	16.6	18.9	
Transport and storage	3.1	4.2	3.2	4.6	3.8	4.1	
Communication	2.0	*1.4	*1.6	*1.5	*0.8	*1.7	
Finance, property and business services	5.6	6.1	5.4	4.8	5.3	6.0	
Public administration and defence	2.8	3.4	3.6	3.0	*1.7	2.3	
Community services (a)	17.8	17.4	17.7	16.3	14.5	13.0	
Recreation, personal and other services	7.3	6.6	7.0	5.6	5.9	5.0	
<i>Total</i>	<i>108.0</i>	<i>105.6</i>	<i>100.5</i>	<i>99.3</i>	<i>98.2</i>	<i>98.8</i>	

(a) Comprises health, education, libraries etc.; welfare and religious institutions; other community services. (b) Comprises Yorke and Lower North, Northern and Eyre Statistical Divisions. (c) Comprises Outer Adelaide, Murray Lands and South East Statistical Divisions.

EXPLANATORY NOTES

Introduction

This publication contains estimates of the civilian labour force derived from the labour force survey part of the monthly population survey, including estimates for regions of South Australia.

2. Preliminary survey results are published in advance of this more detailed publication in *The Labour Force, Australia, Preliminary* (6202.0).

3. Although emphasis in the population survey is placed on the regular collection of data on demographic and labour force characteristics of the population, supplementary and special surveys of particular aspects of the labour force or of other subjects are carried out from time to time. Statistics from these surveys are published and are available on request. For a list of publications on labour force and related topics, refer to paragraph 35 of these Notes.

The population survey

4. The population survey is based on a multi-stage area sample of private dwellings (about 4,200 houses, flats, etc.) and a list sample of non-private dwellings (hotels, motels, etc.), and covers about seven-tenths of one per cent of the population of South Australia. The information is obtained from the occupants of selected dwellings by carefully chosen and specially trained interviewers. The interviews are generally conducted during the two weeks beginning on the Monday between the 6th and 12th of each month. The information obtained relates to the week before the interview (*i.e.* the reference week).

Scope

5. The labour force survey includes all persons aged 15 and over except:

- (a) members of the permanent defence forces;
- (b) certain diplomatic personnel of overseas governments, customarily excluded from census and estimated populations;
- (c) overseas residents in Australia; and
- (d) members of non-Australian defence forces (and their dependants) stationed in Australia.

Coverage

6. In the labour force survey, coverage rules are applied which aim to ensure that each person is associated with only one dwelling, and hence has only one chance of selection. The coverage rules are, necessarily, a balance between theoretical and operational considerations. Nevertheless, the chance of a person being enumerated at two separate dwellings in the one survey is considered to be negligible.

7. Persons who are away from their usual residence for six weeks or less at the time of interview are enumerated at their usual residence (relevant information may be obtained from other usual residents present at the time of the survey).

Regions of South Australia

8. The regions used in this publication are standard ABS Statistical Regions (*see* maps) and do not necessarily correspond with regions adopted by other government authorities.

Population benchmarks

9. Labour force survey estimates of persons employed, unemployed and not in the labour force are calculated in such a way as to add up to the independently estimated distribution of the population aged 15 and over by age and sex. This procedure compensates for underenumeration in the survey, and leads to more reliable estimates. The independent population statistics (benchmarks) are the latest available estimates at the time the labour force survey is conducted, but they usually differ from the official population estimates subsequently published in *Australian Demographic Statistics* (3101.0) because they are necessarily derived from incomplete information about population changes.

10. Regular estimates of the population at the regional level are not available, and so benchmarks for the Adelaide Statistical Division and the Balance of South Australia have been used to produce regional estimates. For this reason, estimates of the civilian population aged 15 years and over are not made available at the regional level.

Revision of series

11. Survey estimates are not revised for the usually small amendments of population benchmarks arising from new data on deaths and overseas and internal migration. Revisions are made, however, after each Census of Population and Housing, and when population estimation bases are reviewed. These revisions affect original, seasonally adjusted and trend estimates. From February 1994, Labour Force Survey estimates are based on population estimates obtained from the 1991 Census of Population and Housing. Small revisions have been made to many of the historical estimates from January 1989 to January 1994.

12. Population benchmarks used in the estimation of Labour Force Survey data are compiled according to place of usual residence. For an explanation of the conceptual basis of population estimates, *see Information Paper: Population Estimates: An Outline of The New Conceptual Basis of ABS Population Estimates* (3216.0). Prior to October 1992, labour force estimates were based on a combination of place of enumeration and place of usual residence.

13. National surveys were conducted in February, May, August and November each year from 1964 to February 1978. The survey has been conducted on a monthly basis since February 1978.

14. The questionnaire used in the survey for the collection of labour force data has been revised from time to time, the latest occasion being for the April 1986 survey. Details of these changes have been published in *Information Paper: Questionnaires Used in the Labour Force Survey* (6232.0) in March 1978, December 1981, August 1984, June 1986, June 1991 and March 1993.

15. In April 1986, the questionnaire was revised following the extension of the definition of employed persons to include persons who worked without pay between 1 and 14 hours per week in a family business or on a farm (*i.e.* unpaid family helpers). This definition aligned the Australian labour force concepts with the set of definitions adopted by the 13th International Conference of Labour Statisticians in October 1982.

16. Previously, unpaid family helpers who worked 1 to 14 hours, or who had such a job but were not at work, were defined as either unemployed or not in the labour force, depending on whether they were actively looking for work.

Comparability of series

17. As noted in paragraph 11, estimates from January 1989 have been revised to conform to revised population estimates following the 1991 Census of Population and Housing, and are thus not strictly comparable with estimates for periods prior to January 1989 which have not been revised. An examination of the revised estimates showed that the effects on Labour Force Survey estimates for the period before January 1989 were inconsequential, and that no meaningful purpose would be served by publishing revised estimates for that period.

18. Comparability with estimates produced from the quarterly survey of employment and earnings is affected by the use of a different survey methodology and definitions. The labour force survey provides estimates of people in jobs whereas the survey of employment and earnings provides an estimate of the number of jobs held by wage and salary earners. A more detailed description of the differences between these two series is provided in *Information Paper: Comparison of Employment Estimates from the Labour Force Survey and the Survey of Employment and Earnings* (6263.0).

Survey sample redesign

19. Following each Population Census, the ABS redesigns and reselects the labour force survey to take into account the new information which is obtained from the Census. The sample used in the labour force survey from September 1987 to August 1992, which was designed and selected using preliminary data from the 1986 Census, has been updated and reselected using information collected in the 1991 Census. The new sample was phased in over the period September 1992 to December 1992.

20. For the most part, one quarter of the new sample was introduced each month so that, by December 1992, the entire new sample was in place. Replacement occurred generally at the rotation group level with two groups being substituted each month. Such a pattern of implementation means that any changes to labour force estimates due to differences between the two samples, or any other influences, are spread over the four months rather than being concentrated in one inter-month period.

21. This phase-in scheme applied to the private dwelling sample in urban areas. The new sample for non-private dwellings and for private dwellings in rural areas was introduced in a single stage in November 1992.

22. The sampling fractions for each State/Territory differ and are such that the resultant sample yields reliable estimates of the main labour force aggregates for each State and Territory. The sampling fractions for the new sample together with the sampling fractions determined from the 1986 Census are:

	1986 Census redesign	1991 Census redesign
New South Wales	1 in 230	1 in 277
Victoria	1 in 230	1 in 242
Queensland	1 in 160	1 in 195
South Australia	1 in 115	1 in 139
Western Australia	1 in 115	1 in 146
Tasmania	1 in 70	1 in 75
Northern Territory	1 in 115	1 in 75
Australian Capital Territory	1 in 115	1 in 75

Reliability of the estimates

23. Estimates in this publication are subject to two sources of error:

- (a) *sampling error*: since the estimates are based on information obtained from occupants of a sample of dwellings, they, and the movements derived from them, may differ from the figures that would have been produced if all dwellings had been included in the survey. As noted in paragraph 11, the use of benchmarks in the compilation of regional estimates has not been possible. For this reason users should note that regional estimates may be more volatile than corresponding State estimates and therefore they should not be regarded as reliable indicators of short-term (monthly) movements. More information on sampling error is given in the Technical Notes; and
- (b) *non-sampling error*: inaccuracies may occur because of imperfections in reporting by respondents and interviewers and errors made in the coding and processing of data. These inaccuracies may occur in any enumeration, whether it be a full count or a sample. Every effort is made to reduce the non-sampling error to a minimum by careful design of questionnaires, intensive training and supervision of interviewers and efficient operating procedures.

Differences between population census and population survey estimates

24. The results of the 1991 Census of Population and Housing show that labour force figures derived from the census differ from estimates derived from the labour force surveys.

25. The broad concepts underlying the measures of the labour force and its components, employment and unemployment, are similar in the census and the survey. However there are considerable differences in both the collection methodology adopted (including the detailed questions asked) and estimation procedures. Factors contributing to differences in estimates include: underenumeration in the population census for which census labour force estimates have not been adjusted; the use in the labour force survey of population benchmarks derived from incomplete information about population change (see paragraph 9); the inclusion of permanent defence forces in census estimates; the personal interview approach adopted in the survey as opposed to self-enumeration of census schedules; differing questions used to determine labour force characteristics (particularly the identification of unemployed persons); and differing methods of adjustment for non-response to the survey or census.

26. The labour force survey provides detailed and up-to-date estimates of employment and unemployment for Australia, States and Statistical Regions, whereas the census of population and housing provides counts for small areas but in less detail than is available from the survey.

27. The above considerations should be borne in mind if comparisons are made between population census and labour force survey estimates.

Seasonal adjustment

28. Seasonally adjusted series are published in Table 2. Seasonal adjustment is a means of removing the estimated effects of normal seasonal variation from the series so that the

effects of other influences on the series can be recognised more clearly. Seasonal adjustment does not remove the irregular or non-seasonal influences which may be present in any particular month. This means that month-to-month movements of the seasonally adjusted estimates may not be reliable indicators of trend behaviour. For example, irregular factors unrelated to the trend account for more than half the seasonally adjusted movement with the following frequency:

Employment:	5 in 10 monthly movements
Unemployment:	7 in 10 monthly movements
Unemployment rate:	7 in 10 monthly movements
Participation rate:	9 in 10 monthly movements

29. The seasonal factors for all seasonally adjusted series are reviewed annually to take account of each additional year's original data. The latest review, in February 1994, revised the Australian and State seasonally adjusted and trend monthly series back to February 1978. Information about the method of adjustment and revised seasonally adjusted and trend estimates for all months since January 1989 for Australia and the States are published in the Appendix of *The Labour Force, Australia, February 1994* (6203.0)

Trend estimation

30. Smoothing seasonally adjusted series produces a measure of trend by reducing the impact of the irregular component of the series. The trend estimates are derived by applying a 13-term Henderson-weighted moving average to the respective seasonally adjusted series. These trend series are used to analyse the underlying behaviour of the series over time. Table 2 shows trend estimates for the past 15 months, while the Appendix to the February 1993 issue shows estimates back to January 1981. Trend series graphs are shown on page 5.

31. While this smoothing technique enables estimates to be produced which include the latest month, it does result in revisions to the most recent months as additional observations become available. Generally, subsequent revisions become smaller and, after 3 months, have a negligible impact on the series. There will also be revisions as a result of the annual review of seasonal factors mentioned in paragraph 29.

32. Users may wish to refer to the ABS Information Papers: *A Guide to Smoothing Time Series - Estimate of 'Trend'* (1316.0), and *Time Series Decomposition - An Overview* (1317.0), for more detailed information on producing trend estimates by smoothing seasonally adjusted time series data.

Month-to-month movements

33. Care should be taken in the interpretation of month-to-month movements in these estimates. Survey estimates are subject to sampling and non-sampling variability as explained in paragraph 23. Trend estimates are expected to be relatively unaffected by these changes.

Semi-logarithmic graphs

34. A number of the graphs on page 5 have been drawn using logarithmic vertical scales to facilitate comparisons of rates of growth in series of differing magnitude. Equal distances on the vertical scales (over equal time periods) indicate equal rates of growth for those graphs.

Related publications

35. Users may also wish to refer to the following publications which are available on request:

- Labour Statistics, Australia* (6101.0) – issued annually
- A Guide to Labour Statistics* (6102.0)
- The Labour Force, Australia, Preliminary* (6202.0) – issued monthly
- The Labour Force, Australia* (6203.0) – issued monthly
- The Labour Force, Australia : Historical Summary, 1978 to 1989* (6204.0)
- Information Paper : Questionnaires Used in the Labour Force Survey* (6232.0) – issued March 1993
- Employed Wage and Salary Earners, Australia* (6248.0) – issued quarterly
- Information Paper : Comparison of Employment Estimates from the Labour Force Survey and the Survey of Employment and Earnings* (6263.0) – issued July 1985
- Information Paper : Labour Force Survey Sample Design* (6269.0) – issued September 1992
- Information Paper : Labour Force Survey - Measuring Teenage Unemployment* (6270.0) – issued October 1987
- Information Paper : Revised Labour Force Survey Estimates : January 1984 to January 1989* (6276.0) – issued July 1989
- Information Paper : Measuring Employment and Unemployment* (6279.0) – issued August 1991

36. Current publications produced by the ABS are listed in the *Catalogue of Publications and Products, Australia* (1101.0). The ABS also issues, on Tuesdays and Fridays, a *Publications Advice* (1105.0) which lists publications to be released in the next few days. The Catalogue and Publications Advice are available from any ABS office.

Unpublished statistics

37. The ABS can also make available unpublished labour force survey data. Where it is not possible to do so briefly over the telephone, a charge will be levied depending on the amount of data requested and the medium on which they are provided. Inquiries should be made to the officer whose name appears in the Inquiries box at the front of this publication, or to Information Services in the nearest ABS office.

Symbols and other usages

- n.e.c. not elsewhere classified
- break in continuity of series (where a line is drawn across a column between two consecutive figures in the same column)
- * subject to sampling variability too high for most reasonable uses. See paragraph 6 of the Technical Notes.

38. Estimates have been rounded and discrepancies may occur between sums of the component items and totals.

**PERSONS NOT IN THE LABOUR FORCE,
AUSTRALIA, SEPTEMBER 1993**

This recently released publication (January 1994) provides information on the people who were not officially in the work force in September 1993.

Included in this publication are details relating to:

- *age and main activity when not in the labour force*
- *main reasons for not seeking work*
- *marginal attachment to the work force*
- *discouraged job seekers*
- *the effect of child care on labour force status*
- *previous employment*

The cost of this publication (Catalogue No. 6220.0) is **\$13.00**
Unpublished data for South Australia is also available

For further information contact Brian Moody on (08) 237 7315

FOR A COPY OF THE PUBLICATION CONTACT THE ABS BOOKSHOP IN YOUR STATE



ABS BOOKSHOPS

Adelaide	(08) 237 7582	Sydney	(02) 268 4654
Melbourne	(03) 615 7829	Perth	(09) 323 5143
Brisbane	(07) 222 6350	Canberra	(06) 252 5249
Hobart	(002) 20 5800	Darwin	(089) 43 2111

TECHNICAL NOTES

A new sample was phased in over the period September to December 1992. For information about the sample design see paragraphs 19 to 22 of the Explanatory Notes of this publication or *Information Paper – Labour Force Survey Sample Design* (6269.0).

Estimation procedure

2. The labour force estimates are derived from the population survey by use of a complex ratio estimation procedure, which ensures that the survey estimates conform to an independently estimated distribution of the population by age and sex, rather than to the age and sex distribution within the sample itself.

Reliability of the estimates

3. Two types of error are possible in an estimate based on a sample survey: sampling error and non-sampling error. For an explanation of non-sampling error see paragraph 13 of these technical notes. The *sampling error* is a measure of the variability that occurs by chance because a sample, rather than the entire population, is surveyed. Since the estimates in this publication are based on information obtained from occupants of a sample of dwellings, they, and the movements derived from them, are subject to sampling variability; that is, they may differ from the estimates that would have been produced if all dwellings had been included in the surveys. One measure of the likely difference is given by the *standard error*, which indicates the extent to which an estimate might have varied by chance because only a sample of dwellings was included. There are about two chances in three that a sample estimate will differ by less than one standard error from the estimate that would have been obtained if all dwellings had been included, and about nineteen chances in twenty that the difference will be less than two standard errors. Another measure of sampling variability is the *relative standard error* which is obtained by expressing the standard error as a percentage of the estimate to which it refers. The *relative standard error* is a useful measure in that it provides an immediate indication of the percentage errors likely to have occurred due to sampling, and thus avoids the need to refer also to the size of the estimate.

4. Space does not allow for the separate indication of the standard errors of all estimates in this publication. Standard errors of estimates derived from the survey, and of monthly movements between surveys can be determined by using the table on page 39.

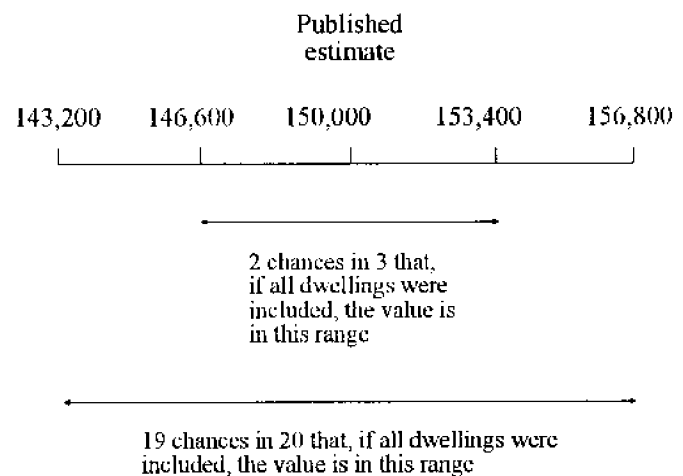
5. The size of the standard error increases with the level of the estimate, so that the larger the estimate the larger is the standard error. However, it should be noted that the larger the sample estimate the smaller will be the standard error in percentage terms. Thus, larger sample estimates will be relatively more reliable than smaller estimates.

6. As the standard errors in the following table show, the smaller the estimate the higher is the *relative standard error*. Very small estimates are subject to such high standard errors (relative to the size of the estimate) as to detract seriously from their value for most reasonable uses. In the tables in this publication, only estimates with relative standard errors of 25 per cent or less, and percentages based on such estimates, are considered sufficiently reliable for most purposes. However, estimates and percentages with larger relative standard errors have been included and are preceded by an asterisk (e.g. *1.5) to indicate they are subject to high standard errors and should be used with caution.

7. The movement in the level of an estimate is also subject to sampling variability. The standard error of the movement depends on the levels of the estimates from which the movement is obtained rather than the size of the movement. An indication of the magnitude of standard errors of monthly movements is also given in the following table. The estimates of standard error of monthly movements apply only to estimates of movements between two consecutive months. Movements between corresponding months of consecutive quarters (quarterly movements), corresponding months of consecutive years (annual movements) and other non-consecutive months, will generally be subject to somewhat greater sampling variability than is indicated in the table. Standard errors of *quarterly* movements can be obtained by multiplying the figures in column 1 of the following table by 1.21. Standard errors of all *annual* movements can be obtained by multiplying the figures in column 1 of the following table by 1.3. When using the table to calculate standard errors of movements, refer to the larger of the two estimates from which the movement is derived.

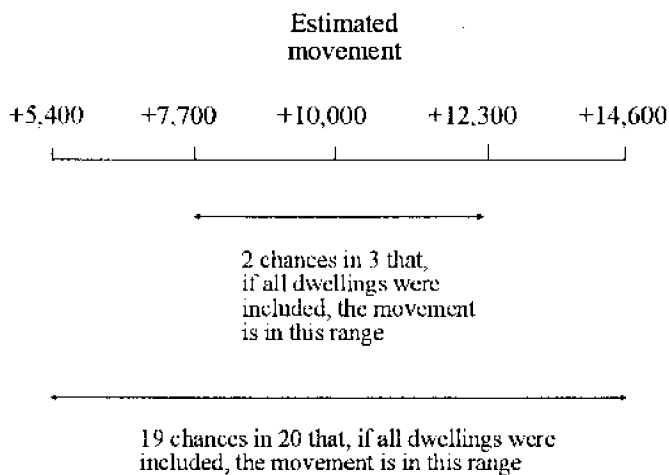
8. Examples of the calculation and use of standard errors are given below:

- (a) From column 1 of the following table it will be seen that an estimate of 150,000 persons in South Australia has a standard error of about 3,400. Therefore, there are about two chances in three that the number that would have been obtained if all dwellings had been included in the survey would have been within the range 146,600 to 153,400 and about nineteen chances in twenty that it would have been within the range 143,200 to 156,800.



- (b) Suppose that in the previous month the equivalent estimate was 140,000 persons (*i.e.* there was an increase of 10,000 persons since the previous month).

Column 3 in the following table relates the standard error of the monthly movement to the larger of the two estimates from which the movement is derived. In this case, the larger of the two estimates from which the movement is derived is 150,000 and from column 3 it will be seen that the standard error of the monthly movement is about 2,300. Therefore, there are about two chances in three that if all dwellings had been included in the surveys the movement would have been within the range +7,700 to +12,300 and about nineteen chances in twenty that it would have been within the range +5,400 to +14,600.



9. The relative standard errors of estimates of *average hours worked, average duration of unemployment and median duration of unemployment* are obtained by first finding the relative standard error of the estimates of the total number of persons contributing to the estimate (see column 2 in the following table) and then multiplying the figure so obtained by the following relevant factors:

Average hours worked: 0.7
Average duration of unemployment: 1.3
Median duration of unemployment: 2.0

10. An example of the calculation of standard errors by the use of these factors is as follows:

If an estimate of median duration of unemployment is 25 weeks and the number unemployed is estimated as 30,000, from column 2 of the following table it can be estimated that this figure (30,000) has a relative standard error of about 6.0 per cent. The *relative standard error* of the estimate of median duration of unemployment is calculated by multiplying this figure (6.0) by the appropriate factor shown in the previous paragraph (in this case 2.0): $6.0 \times 2.0 = 12.0$ per cent. The *standard error* of this estimate of median duration of unemployment is therefore 12.0 per cent of 25, *i.e.* about 3. Therefore there are about two chances in three that the median duration of

unemployment that would have been obtained if all dwellings had been included in the survey would have been within the range 22 to 28 weeks, and about nineteen chances in twenty that it would have been within the range 19 to 31 weeks.

11. Proportions and percentages (for example, participation rates) formed from the ratio of two estimates are also subject to sampling error. The size of the error depends on the accuracy of both the numerator and denominator. The formula for the relative standard error (RSE) of a proportion or percentage is given below:

$$RSE(x/y) = \sqrt{[RSE(x)]^2 + [RSE(y)]^2}$$

12. Standard errors contained in the following table are designed to provide an average standard error applicable for all monthly labour force survey estimates. Analysis of the standard errors for South Australia applicable to particular survey estimates has shown that the standard errors of estimates of employment are generally equivalent to those shown in the following table, while standard errors for unemployment and not in the labour force are approximately 3 per cent and 11 per cent respectively higher than those shown in the table. Standard errors of estimates of persons born in Australia are approximately the same as those shown in the table. For aggregate estimates of persons born outside Australia the standard errors are about 14 per cent higher. The standard errors vary for individual countries of birth, but are on average about 7 per cent higher.

13. The imprecision due to sampling variability, which is measured by the standard error, should not be confused with inaccuracies that may occur because of imperfections in reporting by respondents, errors made in collection such as in recording and coding data, and errors made in processing the data. Inaccuracies of this kind are referred to as the *non sampling error* and they may occur in any enumeration, whether it be a full count or a sample. It is not possible to quantify nonsampling error but every effort is made to reduce it to a minimum by careful design of questionnaires, intensive training and supervision of interviewers and efficient operating procedures.

**STANDARD ERRORS OF ESTIMATES OF LEVELS FROM DECEMBER 1992 AND OF MONTHLY MOVEMENTS^(a)
DECEMBER 1992 – JANUARY 1993 ONWARDS^(b), STATISTICAL REGIONS OF SOUTH AUSTRALIA**

Size of estimate	South Australia; Adelaide Statistical Division; and Balance of South Australia			Northern Adelaide			Western Adelaide			Eastern Adelaide		
	SE	RSE	SEM	SE	RSE	SEM	SE	RSE	SEM	SE	RSE	SEM
	No.	%	No.	No.	%	No.	No.	%	No.	No.	%	No.
No.	(1)	(2)	(3)	(1)	(2)	(3)	(1)	(2)	(3)	(1)	(2)	(3)
200	180	90.0	210	170	85.0	120	170	85.0	130	170	85.0	140
300	220	73.3	240	200	66.7	140	200	66.7	160	210	70.0	160
500	290	58.0	290	260	52.0	180	260	52.0	200	270	54.0	200
700	340	48.6	330	300	42.9	210	310	44.3	230	320	45.7	240
1,000	400	40.0	380	360	36.0	240	360	36.0	270	370	37.0	280
1,500	490	32.7	430	430	28.7	290	440	29.3	320	450	30.0	330
2,000	560	28.0	480	500	25.0	330	510	25.5	360	520	26.0	370
2,500	620	24.8	520	550	22.0	360	560	22.4	400	580	23.2	410
3,000	670	22.3	560	600	20.0	390	610	20.3	430	640	21.3	440
4,000	770	19.3	620	690	17.3	440	710	17.8	490	730	18.3	500
5,000	850	17.0	670	770	15.4	480	790	15.8	540	810	16.2	550
7,000	980	14.0	760	910	13.0	560	930	13.3	630	960	13.7	640
10,000	1,150	11.5	860	1,100	11.0	650	1,100	11.0	730	1,150	11.5	750
15,000	1,350	9.0	1,000	1,300	8.7	780	1,350	9.0	880	1,400	9.3	890
20,000	1,550	7.8	1,100	1,500	7.5	880	1,550	7.8	990	1,600	8.0	1,000
30,000	1,800	6.0	1,300	1,850	6.2	1,050	1,900	6.3	1,200	1,950	6.5	1,200
50,000	2,250	4.5	1,550	2,350	4.7	1,300	2,400	4.8	1,500	2,500	5.0	1,500
70,000	2,550	3.6	1,750	2,800	4.0	1,500	2,850	4.1	1,700	2,950	4.2	1,750
100,000	2,900	2.9	2,000	3,350	3.4	1,800	3,400	3.4	2,000	3,500	3.5	2,050
150,000	3,400	2.3	2,300	4,050	2.7	2,100	4,150	2.8	2,400	4,300	2.9	2,450
200,000	3,750	1.9	2,550	4,700	2.4	2,400	4,800	2.4	2,700	4,950	2.5	2,750
300,000	4,350	1.5	2,950	5,700	1.9	2,850	5,800	1.9	3,200	6,000	2.0	3,300
500,000	5,200	1.0	3,550	7,400	1.5	3,600	7,500	1.5	4,000	7,800	1.6	4,100

Size of estimate	Southern Adelaide			Northern and Western SA (c)			Southern and Eastern SA (d)		
	SE	RSE	SEM	SE	RSE	SEM	SE	RSE	SEM
	No.	%	No.	No.	%	No.	No.	%	No.
No.	(1)	(2)	(3)	(1)	(2)	(3)	(1)	(2)	(3)
200	160	80.0	120	180	90.0	130	160	80.0	130
300	190	63.3	140	220	73.3	160	200	66.7	150
500	250	50.0	170	280	56.0	200	260	52.0	190
700	290	41.4	200	330	47.1	230	300	42.9	220
1,000	350	35.0	230	390	39.0	270	360	36.0	260
1,500	420	28.0	280	480	32.0	320	430	28.7	310
2,000	480	24.0	310	550	27.5	360	500	25.0	350
2,500	540	21.6	350	610	24.4	400	550	22.0	380
3,000	590	19.7	370	660	22.0	430	600	20.0	410
4,000	670	16.8	420	760	19.0	490	690	17.3	470
5,000	750	15.0	470	850	17.0	540	770	15.4	520
7,000	880	12.6	540	1,000	14.3	630	910	13.0	600
10,000	1,050	10.5	630	1,200	12.0	730	1,100	11.0	700
15,000	1,300	8.7	750	1,450	9.7	880	1,300	8.7	830
20,000	1,450	7.3	850	1,650	8.3	990	1,500	7.5	940
30,000	1,800	6.0	1,000	2,050	6.8	1,200	1,850	6.2	1,100
50,000	2,300	4.6	1,250	2,600	5.2	1,500	2,350	4.7	1,400
70,000	2,700	3.9	1,450	3,100	4.4	1,700	2,800	4.0	1,600
100,000	3,250	3.3	1,700	3,650	3.7	2,000	3,350	3.4	1,900
150,000	3,950	2.6	2,050	4,500	3.0	2,400	4,050	2.7	2,250
200,000	4,550	2.3	2,300	5,200	2.6	2,700	4,700	2.4	2,550
300,000	5,600	1.9	2,750	6,300	2.1	3,200	5,700	1.9	3,050
500,000	7,200	1.4	3,450	8,100	1.6	4,000	7,400	1.5	3,800

(a) See Technical Notes paragraph 7 for details on calculating standard errors for quarterly and annual movements

(b) For standard errors, etc. for earlier periods, see previous issues of this publication.

(c) Comprises Yorke and Lower North, Northern and Eyre Statistical Divisions.

(d) Comprises Outer Adelaide, Murray Lands and South East Statistical Divisions

SE standard error RSE relative standard error SEM standard error of monthly movements

GLOSSARY

Actively looking for work: Includes writing, telephoning or applying in person to an employer for work; answering a newspaper advertisement for a job; checking factory or Commonwealth Employment Service noticeboards; being registered with the Commonwealth Employment Service; checking or registering with any other employment agency; advertising or tendering for work; and contacting friends or relatives.

Aggregate hours worked: The total number of hours a group of employed persons has actually worked during the reference week, not necessarily hours paid for.

Average hours worked: Aggregate hours worked by a group divided by the number of persons in that group.

Average duration of unemployment: For a group of unemployed persons, the aggregate duration of unemployment divided by the number of persons in the group.

Duration of unemployment: The period from the time a person began looking for work or was stood down, to the end of the reference week. Thus, the survey measures current (and continuing) periods of unemployment rather than completed spells. For persons who may have begun looking for work while still employed, the duration of unemployment is defined as the period from the time the person last worked full-time for two weeks or more to the end of the reference week.

Employed: Persons aged 15 years and over who, during the reference week:

- (a) worked for one hour or more for pay, profit, commission or payment in kind in a job or business, or on a farm (comprising employees, employers and self-employed persons); or
- (b) worked for one hour or more without pay in a family business or on a farm (*i.e.* unpaid family helpers); or
- (c) were employees who had a job but were not at work and were: on paid leave; on leave without pay for less than four weeks up to the end of the reference week; stood down without pay because of bad weather or plant breakdown at their place of employment for less than four weeks up to the end of the reference week; on strike or locked out; on workers compensation and expected to be returning to their job; or receiving wages or salary while undertaking full-time study; or
- (d) were employers, self-employed persons or unpaid family helpers who had a job, business or farm, but were not at work.

Employment status: Persons in the labour force classified according to whether they are employed or unemployed.

Full-time workers: Employed persons who usually work 35 hours or more a week (in all jobs) and others who, although usually working less than 35 hours a week, worked 35 hours or more during the reference week.

Industry: Classified according to the *Australian Standard Industrial Classification (ASIC) 1983* (1201.0 and 1202.0).

Labour force: For any group, persons who were employed or unemployed, as defined.

Labour force status: A classification of the civilian population aged 15 years and over into employed, unemployed or not in the labour force, as defined. The definitions conform closely to the international standard definitions adopted by the International Conferences of Labour Statisticians.

Marital status: Persons are classified as married (husband and wife) if they are reported as being married (including *de facto*) and their spouse was a usual resident of the household at the time of the survey. The not-married category comprises persons who have never married, or are separated, widowed or divorced, as well as those who, although reported as being married, did not have a spouse who usually lived in the household.

Median duration of unemployment: The duration which divides unemployed persons into two equal groups, one comprising persons whose duration of unemployment is above the median, and the other, persons whose duration is below it.

Not in the labour force: Persons who were not in the categories employed or unemployed, as defined. They include persons who were keeping house (unpaid), retired, voluntarily inactive, permanently unable to work, persons in institutions (hospitals, gaols, sanatoriums, etc.), trainee teachers, members of contemplative religious orders, and persons whose only activity during the reference week was jury service or unpaid voluntary work for a charitable organisation.

Occupation: Classified according to the *Australian Standard Classification of Occupations (ASCO) 1986* (1222.0).

Participation rate: For any group, the labour force expressed as a percentage of the civilian population aged 15 years and over in the same group.

Part-time workers: Employed persons who usually worked less than 35 hours a week and who did so during the reference week.

Seasonally adjusted series: A time series of estimates with the estimated effects of normal seasonal variation removed. See paragraphs 28 and 29 of the Explanatory Notes for more detail.

Status of worker: Employed persons classified by whether they were employers, self-employed persons, wage and salary earners (employees), or unpaid family helpers.

Trend series: A smoothed seasonally adjusted series of estimates. See paragraphs 30 to 32 of the Explanatory Notes for more detail.

Unemployed: Persons aged 15 years and over who were not employed during the reference week, and:

- (a) had actively looked for full-time or part-time work at any time in the four weeks up to the end of the reference week and:
 - (i) were available for work in the reference week, or would have been available except for temporary illness (*i.e.* lasting for less than four weeks to the end of the reference week); or
 - (ii) were waiting to start a new job within four weeks from the end of the reference week and would have started in the reference week if the job had been available then; or

- (b) were waiting to be called back to a full-time or part-time job from which they had been stood down without pay for less than four weeks up to the end of the reference week (including the whole of the reference week) for reasons other than bad weather or plant breakdown.

Unemployed looking for full-time work: Unemployed persons who actively looked for full-time work or were to resume a full-time job, from which they had been stood down.

Unemployed looking for part-time work: Unemployed persons who had actively looked for part-time work only, or were to resume a part-time job, from which they had been stood down.

Unemployment rate: For any group, the number of unemployed persons expressed as a percentage of the labour force in the same group.

EARLY RELEASE OF FINAL LABOUR FORCE ESTIMATES

New Service

- Final labour force estimates are now available on subscription as a special data service well before the release of *The Labour Force, Australia* (6203.0). As part of this new service, clients will be able to specify the data items they require and set out formats of tables to suit their personal needs. It will also be possible to specify the medium (hard copy, disk, electronic mail) of their choice.
- Subscription orders only will be catered for initially although it is envisaged that the service will be extended to include ad hoc requests at a later date.

Data detail

- All the data in 6203.0 including status of worker, industry and occupation will be available. State and regional data not ordinarily available before the release of 6203.0 can also be ordered.

Timing

- Under this special new service, data are expected to be available within a week after the release of *The Labour Force, Australia, Preliminary* (6202.0) and up to two weeks ahead of the final publication. Data will be despatched when available, rather than on a fixed schedule.

Cost

- The cost of this service will vary according to the level of detail required. However, the charging will follow the normal schedule for ad hoc user requests with substantial discounts for subscriptions.

Inquiries

- Inquiries concerning the new service should be directed to Heather Crawford on (06) 252 6525 or any ABS State office.

LABOUR FORCE SUPPLEMENTARY AND SPECIAL SURVEYS

Listed below are some recent Australian publications produced from supplementary and special surveys. Equivalent State data and special tabulations are available, subject to statistical reliability.

Title of publication	Catalogue No.
<i>Employment Benefits, Annual, August 1992</i>	6334.0
<i>Job Search Experience of Unemployed Persons, Annual, July 1993</i>	6222.0
<i>Labour Force Experience, Annual, March 1993</i>	6206.0
<i>Labour Force Status and Educational Attainment, Annual, February 1993</i>	6235.0
<i>Labour Force Status and Other Characteristics of Families, Annual, June 1993</i>	6224.0
<i>Labour Force Status and Other Characteristics of Migrants, Three-yearly September 1990</i>	6250.0
<i>Labour Mobility, Annual, February 1992</i>	6209.0
<i>Multiple Jobholding, Australia, July 1991</i>	6216.0
<i>Participation in Education, September 1993</i>	6272.0
<i>Persons Employed at Home, March 1992</i>	6275.0
<i>Persons Not in the Labour Force, Annual, September 1993</i>	6220.0
<i>Persons Who Had Re-entered the Labour Force, May 1993</i>	6264.0
<i>Persons Who Have Left the Labour Force, April 1991</i>	6267.0
<i>Retirement and Retirement Intentions, Australia, October 1992</i>	6238.0
<i>Successful and Unsuccessful Job Search Experience, Two-yearly, July 1992</i>	6245.0
<i>Superannuation, Australia, November 1991</i>	6319.0
<i>Trade Union Members, Two-yearly, August 1992</i>	6325.0
<i>Transition From Education to Work, Annual, May 1993</i>	6227.0
<i>Underemployed Workers, Australia, May 1991</i>	6265.0
<i>Weekly Earnings of Employees (Distribution), Annual, August 1992</i>	6310.0

Contact: Brian Moody (08) 237 7315

TABLE A1 — CIVILIAN LABOUR FORCE: ORIGINAL, SEASONALLY ADJUSTED AND TREND SERIES
MALES, SOUTH AUSTRALIA

Month	Employed			Unemployed			Labour force			Unemployment rate			Participation rate		
	Original '000	Seasonally adjusted '000	Trend '000	Original '000	Seasonally adjusted '000	Trend '000	Original '000	Seasonally adjusted '000	Trend '000	Original per cent	Seasonally adjusted per cent	Trend per cent	Original per cent	Seasonally adjusted per cent	Trend per cent
1989 —															
Jan.	372.1	373.7	376.4	37.0	33.4	31.7	409.0	407.1	408.1	9.0	8.2	7.8	74.8	74.5	74.6
Feb.	377.2	376.8	376.2	33.2	31.1	31.7	410.5	408.0	408.0	8.1	7.6	7.8	75.0	74.6	74.6
Mar.	378.5	376.2	376.2	30.0	30.7	31.8	408.4	406.8	408.0	7.3	7.5	7.8	74.6	74.3	74.5
Apr.	379.0	378.1	376.7	30.2	31.1	31.7	409.2	409.2	408.4	7.4	7.6	7.8	74.7	74.7	74.5
May	375.9	376.4	377.8	32.8	33.5	31.2	409.9	409.9	409.0	8.0	8.2	7.6	74.5	74.7	74.5
June	378.0	378.1	379.2	28.1	29.5	30.4	406.1	407.6	409.7	6.9	7.2	7.4	73.9	74.2	74.6
July	378.1	379.2	380.7	31.3	31.6	29.5	409.4	410.8	410.2	7.6	7.7	7.2	74.5	74.8	74.6
Aug.	379.8	384.7	382.1	27.4	27.6	28.6	407.2	412.2	410.6	6.7	6.7	7.0	74.0	74.9	74.6
Sept.	386.0	385.5	383.2	25.9	25.3	27.8	411.2	410.8	410.9	6.3	6.2	6.8	74.8	74.6	74.6
Oct.	380.9	380.7	383.6	26.4	27.3	27.4	407.2	408.0	411.0	6.5	6.7	6.7	73.9	74.0	74.6
Nov.	385.0	384.7	383.5	28.7	30.2	27.4	413.7	414.9	410.9	6.9	7.3	6.7	75.0	75.2	74.5
Dec.	386.0	382.2	382.8	27.1	26.5	27.8	413.1	408.7	410.6	6.6	6.5	6.8	74.8	74.0	74.3
1990 —															
Jan.	382.6	384.4	382.3	30.1	27.2	28.2	412.7	411.6	410.4	7.3	6.6	6.9	74.7	74.5	74.3
Feb.	380.9	380.7	382.3	31.7	29.7	28.5	412.7	410.4	410.8	7.7	7.2	6.9	74.6	74.2	74.3
Mar.	383.4	381.1	383.2	28.4	29.1	28.6	411.7	410.2	411.8	6.9	7.1	6.9	74.4	74.1	74.4
Apr.	384.0	383.2	384.4	27.1	27.8	28.7	411.1	411.0	413.1	6.6	6.8	7.0	74.2	74.2	74.6
May	386.0	386.4	385.5	30.0	30.6	29.2	416.0	417.0	414.6	7.2	7.3	7.0	75.0	75.2	74.8
June	389.0	389.1	385.9	27.9	29.3	30.0	416.9	418.4	415.9	6.7	7.0	7.2	75.1	75.4	74.9
July	386.1	387.3	385.4	28.4	28.5	31.2	414.5	415.8	416.6	6.8	6.9	7.5	74.6	74.8	75.0
Aug.	378.8	383.4	384.1	33.7	34.0	32.8	412.5	417.5	417.0	8.2	8.2	7.9	74.2	75.1	75.0
Sept.	378.9	378.5	382.5	35.9	35.3	34.6	414.8	413.9	417.1	8.7	8.5	8.3	74.5	74.4	74.9
Oct.	383.4	383.2	381.1	35.6	36.8	36.1	419.0	420.0	417.3	8.5	8.8	8.7	75.2	75.4	74.9
Nov.	378.7	378.5	380.5	35.8	37.5	37.3	414.5	416.1	417.8	8.6	9.0	8.9	74.3	74.6	74.9
Dec.	384.3	380.3	380.2	38.2	37.6	38.2	422.5	417.9	418.4	9.1	9.0	9.1	75.7	74.9	75.0
1991 —															
Jan.	380.0	381.7	380.2	43.0	38.9	38.8	423.0	420.6	419.0	10.2	9.2	9.3	75.7	75.3	75.0
Feb.	378.8	378.9	379.7	42.7	39.8	39.4	421.5	418.7	419.1	10.1	9.5	9.4	75.4	74.9	75.0
Mar.	381.5	379.2	378.2	37.5	38.7	40.1	419.1	417.8	418.3	9.0	9.3	9.6	74.9	74.7	74.8
Apr.	376.4	375.6	375.7	41.8	42.8	41.0	418.2	418.4	416.6	10.0	10.2	9.8	74.7	74.7	74.4
May	373.3	373.7	372.4	40.5	41.2	41.9	413.8	414.8	414.4	9.8	9.9	10.1	73.8	74.0	73.9
June	371.9	372.1	368.7	40.4	42.3	43.1	412.3	414.4	411.8	9.8	10.2	10.5	73.5	73.9	73.4
July	358.1	359.1	365.2	44.6	44.7	44.4	402.7	403.8	409.6	11.1	11.1	10.8	71.7	71.9	73.0
Aug.	358.7	363.0	362.5	45.0	45.5	45.6	403.7	408.5	408.2	11.1	11.1	11.2	71.8	72.7	72.6
Sept.	361.8	361.6	361.0	47.8	47.3	46.8	409.7	408.9	407.7	11.7	11.6	11.5	72.9	72.7	72.5
Oct.	360.4	360.1	360.5	46.8	48.4	47.8	407.3	408.6	408.3	11.5	11.9	11.7	72.4	72.6	72.5
Nov.	360.1	359.9	360.8	45.9	48.1	48.7	405.9	408.0	409.5	11.3	11.8	11.9	72.1	72.4	72.7
Dec.	365.6	361.9	361.3	50.6	49.9	49.5	416.3	411.8	410.9	12.2	12.1	12.1	73.8	73.0	72.9
1992 —															
Jan.	362.4	363.8	361.6	54.0	48.8	50.4	416.3	412.7	412.0	13.0	11.8	12.2	73.8	73.1	73.0
Feb.	359.7	359.8	361.5	56.7	52.8	51.4	416.4	412.7	412.9	13.6	12.8	12.4	73.7	73.1	73.1
Mar.	364.4	362.1	361.2	50.5	52.2	52.4	414.9	414.3	413.6	12.2	12.6	12.7	73.4	73.3	73.2
Apr.	361.4	360.8	360.5	51.3	52.3	53.4	412.6	413.0	413.9	12.4	12.7	12.9	73.0	73.1	73.2
May	359.5	359.7	359.7	53.8	54.5	54.1	413.3	414.3	413.8	13.0	13.2	13.1	73.1	73.2	73.2
June	358.1	358.2	359.4	53.1	55.5	54.2	411.2	413.7	413.5	12.9	13.4	13.1	72.7	73.1	73.1

TABLE A1 — CIVILIAN LABOUR FORCE: ORIGINAL, SEASONALLY ADJUSTED AND TREND SERIES
 MALES, SOUTH AUSTRALIA—continued

Month	Employed			Unemployed			Labour force			Unemployment rate			Participation rate		
	Original '000	Seasonally adjusted '000	Trend '000	Original '000	Seasonally adjusted '000	Trend '000	Original '000	Seasonally adjusted '000	Trend '000	Original per cent	Seasonally adjusted per cent	Trend per cent	Original per cent	Seasonally adjusted per cent	Trend per cent
1992 —															
July	359.0	360.1	359.6	53.5	53.6	53.9	412.5	413.7	413.5	13.0	13.0	13.0	72.9	73.1	73.0
Aug.	354.5	358.6	360.2	53.6	54.3	53.4	408.1	412.9	413.6	13.1	13.2	12.9	72.1	72.9	73.0
Sept.	360.2	360.1	360.9	52.2	51.8	52.9	411.9	411.9	413.7	12.7	12.6	12.8	72.8	72.7	73.0
Oct.	364.8	364.5	361.4	48.5	50.1	52.4	413.3	414.6	413.8	11.7	12.1	12.7	72.9	73.1	73.0
Nov.	363.5	363.3	361.4	50.6	53.0	52.2	414.2	416.3	413.6	12.2	12.7	12.6	73.0	73.4	72.9
Dec.	362.6	359.0	361.1	54.8	54.1	52.1	417.4	413.1	413.2	13.1	13.1	12.6	73.6	72.8	72.8
1993 —															
Jan.	357.3	358.6	360.9	58.0	52.6	52.0	415.3	411.1	412.9	14.0	12.8	12.6	73.2	72.4	72.7
Feb.	362.8	363.0	360.9	52.7	49.0	51.9	415.4	412.0	412.8	12.7	11.9	12.6	73.2	72.6	72.7
Mar.	362.2	360.0	361.3	50.7	52.3	51.5	412.9	412.3	412.8	12.3	12.7	12.5	72.7	72.6	72.7
Apr.	361.0	360.5	362.0	51.0	51.9	50.7	412.0	412.4	412.8	12.4	12.6	12.3	72.5	72.6	72.6
May	366.7	366.7	362.6	48.5	49.1	49.8	415.2	415.9	412.4	11.7	11.8	12.1	73.0	73.1	72.5
June	362.0	362.0	362.8	48.6	50.7	48.9	410.6	412.7	411.7	11.8	12.3	11.9	72.2	72.6	72.4
July	359.5	360.7	362.6	47.7	47.9	48.1	407.2	408.5	410.7	11.7	11.7	11.7	71.6	71.8	72.2
Aug.	360.4	364.6	362.3	44.0	44.6	47.7	404.4	409.2	410.1	10.9	10.9	11.6	71.0	71.9	72.0
Sept.	360.7	360.8	362.2	47.4	47.1	47.8	408.0	408.0	410.0	11.6	11.6	11.7	71.6	71.6	72.0
Oct.	361.2	360.8	362.1	48.7	50.2	48.2	409.9	411.1	410.3	11.9	12.2	11.7	71.9	72.1	72.0
Nov.	362.7	362.4	362.2	47.5	49.7	48.4	410.2	412.1	410.7	11.6	12.0	11.8	71.9	72.3	72.0
Dec.	367.8	364.2	362.2	48.3	47.7	48.5	416.1	411.9	410.7	11.6	11.6	11.8	72.9	72.2	72.0
1994 —															
Jan.	361.3	362.5	362.0	54.1	49.1	48.5	415.4	411.7	410.5	13.0	11.9	11.8	72.8	72.1	71.9
Feb.	359.6	359.8	361.7	50.1	46.6	48.3	409.6	406.4	410.0	12.2	11.5	11.8	71.7	71.2	71.8

TABLE A2 — CIVILIAN LABOUR FORCE: ORIGINAL, SEASONALLY ADJUSTED AND TREND SERIES
FEMALES, SOUTH AUSTRALIA

Month	Employed			Unemployed			Labour force			Unemployment rate			Participation rate		
	Original '000	Seasonally adjusted '000	Trend '000	Original '000	Seasonally adjusted '000	Trend '000	Original '000	Seasonally adjusted '000	Trend '000	Original per cent	Seasonally adjusted per cent	Trend per cent	Original per cent	Seasonally adjusted per cent	Trend per cent
1989 —															
Jan.	256.0	262.1	262.5	23.8	22.7	22.0	279.8	284.8	284.5	8.5	8.0	7.7	49.3	50.2	50.2
Feb.	262.4	262.9	263.8	26.4	21.5	21.5	288.9	286.3	285.3	9.1	8.2	7.5	50.9	50.4	50.3
Mar.	272.3	267.2	264.9	30.1	18.8	21.2	292.4	286.0	286.1	6.9	6.6	7.4	51.4	50.3	50.3
Apr.	269.7	266.2	265.8	20.2	20.0	21.0	289.9	286.2	286.9	7.0	7.0	7.3	51.0	50.3	50.4
May	268.3	266.3	266.9	21.6	21.8	20.9	289.9	288.1	287.8	7.5	7.6	7.3	50.9	50.6	50.5
June	265.5	265.3	268.0	20.7	21.9	20.8	286.2	287.3	288.8	7.2	7.6	7.2	50.2	50.4	50.7
July	264.5	267.5	268.9	20.0	21.5	20.8	284.5	289.0	289.7	7.0	7.5	7.2	49.9	50.7	50.8
Aug.	270.8	273.3	269.2	18.5	19.3	20.8	289.3	292.6	290.1	6.4	6.6	7.2	51.2	50.7	50.8
Sept.	270.9	271.4	269.1	20.2	20.0	20.9	291.1	291.4	289.9	6.9	6.9	7.2	50.9	51.0	50.7
Oct.	266.1	267.6	268.5	21.5	21.9	21.0	287.6	289.5	289.5	7.5	7.6	7.2	50.3	50.6	50.6
Nov.	265.9	265.8	267.9	19.9	21.7	21.2	285.8	287.5	289.0	7.0	7.5	7.3	49.9	50.2	50.5
Dec.	267.7	265.0	267.6	21.1	20.7	21.3	288.8	285.7	288.9	7.3	7.2	7.4	50.4	49.8	50.4
1990 —															
Jan.	263.5	269.0	267.8	22.2	21.1	21.2	285.7	290.1	289.0	7.8	7.3	7.3	49.8	50.6	50.4
Feb.	270.1	270.2	268.5	26.3	23.1	20.9	296.4	293.3	289.4	8.9	7.9	7.2	51.6	51.1	50.4
Mar.	274.1	269.4	269.4	20.3	19.1	20.7	294.4	288.5	290.1	6.9	6.6	7.1	51.2	50.2	50.5
Apr.	273.3	270.4	270.1	19.9	19.7	20.8	293.2	290.1	290.9	6.8	6.8	7.1	51.0	50.4	50.6
May	272.5	270.9	270.7	21.2	21.4	21.2	293.7	292.4	292.4	7.2	7.3	7.3	51.0	50.8	50.7
June	269.2	269.0	271.3	20.2	21.5	22.0	289.4	290.5	293.3	7.0	7.4	7.5	50.2	50.4	50.9
July	269.8	273.0	272.3	21.2	22.9	22.6	291.0	295.9	294.9	7.3	7.7	7.7	50.4	51.3	51.1
Aug.	272.9	275.0	273.5	23.6	24.7	23.1	296.6	299.7	296.6	8.0	8.2	7.8	51.4	51.9	51.4
Sept.	273.5	273.2	274.7	24.2	24.2	23.4	297.7	297.4	298.1	8.1	8.1	7.8	51.5	51.5	51.6
Oct.	274.1	275.3	275.5	22.0	22.4	23.4	296.1	297.7	299.0	7.4	7.5	7.8	51.2	51.5	51.7
Nov.	275.4	275.5	275.7	21.0	22.7	23.7	296.4	298.2	299.4	7.1	7.6	7.9	51.2	51.5	51.7
Dec.	282.7	280.2	275.1	23.5	22.9	24.4	306.2	303.1	299.5	7.7	7.6	8.1	52.8	52.3	51.7
1991 —															
Jan.	265.6	270.7	274.4	29.5	27.9	25.3	295.1	298.5	299.7	10.0	9.3	8.4	50.9	51.5	51.7
Feb.	275.1	274.8	273.7	28.0	24.5	26.3	303.1	299.3	300.0	9.2	8.2	8.8	52.2	51.5	51.7
Mar.	273.0	268.8	273.3	29.8	28.3	27.1	302.8	297.2	300.4	9.8	9.5	9.0	52.1	51.1	51.7
Apr.	276.6	274.4	272.9	29.0	28.7	27.6	305.6	303.1	300.5	9.5	9.5	9.2	52.5	52.1	51.7
May	275.6	274.6	272.6	27.4	27.7	27.8	303.0	302.3	300.4	9.0	9.2	9.2	52.0	51.9	51.6
June	274.8	274.5	272.1	24.2	25.8	27.7	299.0	300.3	299.9	8.1	8.6	9.2	51.3	51.5	51.5
July	266.1	269.0	271.4	26.1	28.5	27.7	292.2	297.5	299.1	8.9	9.6	9.3	50.1	51.0	51.3
Aug.	267.8	269.5	270.5	27.0	28.3	27.7	294.8	297.8	298.3	9.2	9.5	9.3	50.5	51.0	51.1
Sept.	270.1	269.2	269.7	28.0	28.1	27.9	298.1	297.3	297.6	9.4	9.5	9.4	51.0	50.9	51.0
Oct.	268.7	269.7	269.0	26.1	26.7	28.2	294.8	296.4	297.2	8.9	9.0	9.5	50.4	50.7	50.8
Nov.	270.0	270.0	268.4	26.5	28.5	28.3	296.5	298.5	296.8	8.9	9.6	9.5	50.7	51.0	50.7
Dec.	269.7	267.3	267.7	31.1	30.3	28.4	300.8	297.6	296.2	10.4	10.2	9.6	51.4	50.8	50.6
1992 —															
Jan.	261.6	266.5	266.8	30.2	28.3	28.7	291.8	294.8	295.5	10.3	9.6	9.7	49.8	50.3	50.4
Feb.	266.0	265.4	265.8	32.7	28.5	29.3	298.7	293.9	295.1	10.9	9.7	9.9	51.0	50.1	50.3
Mar.	269.2	265.7	265.2	29.6	28.3	29.9	298.8	293.9	295.1	9.9	9.6	10.1	50.9	50.1	50.3
Apr.	266.7	265.2	265.3	31.7	31.3	30.5	298.4	296.6	295.7	10.6	10.6	10.3	50.8	50.5	50.4
May	264.8	264.2	266.0	32.2	32.5	30.8	297.0	296.7	296.8	10.8	11.0	10.4	50.6	50.5	50.6
June	267.3	266.6	267.1	30.1	32.3	31.0	297.5	298.9	298.2	10.1	10.8	10.4	50.7	50.9	50.8

TABLE A2 — CIVILIAN LABOUR FORCE: ORIGINAL, SEASONALLY ADJUSTED AND TREND SERIES
FEMALES, SOUTH AUSTRALIA—continued

Month	Employed			Unemployed			Labour force			Unemployment rate			Participation rate		
	Original '000	Seasonally adjusted '000	Trend '000	Original '000	Seasonally adjusted '000	Trend '000	Original '000	Seasonally adjusted '000	Trend '000	Original per cent	Seasonally adjusted per cent	Trend per cent	Original per cent	Seasonally adjusted per cent	Trend per cent
1992 —															
July	267.1	269.9	268.3	26.6	29.1	31.1	293.7	299.0	299.4	9.1	9.7	10.4	50.0	50.9	51.0
Aug.	268.0	269.7	269.2	28.8	30.4	31.1	296.9	300.1	300.3	9.7	10.1	10.4	50.5	51.1	51.1
Sept.	271.6	270.4	269.8	30.6	30.9	31.2	302.2	301.2	301.0	10.1	10.2	10.4	51.4	51.2	51.2
Oct.	269.5	270.7	270.1	31.1	31.8	31.4	300.6	302.4	301.4	10.3	10.5	10.4	51.1	51.4	51.2
Nov.	268.4	268.3	270.0	30.8	32.9	31.6	299.3	301.2	301.6	10.3	10.9	10.5	50.8	51.2	51.3
Dec.	271.1	268.6	269.9	32.4	31.4	31.5	303.5	300.0	301.4	10.7	10.5	10.5	51.6	51.0	51.2
1993 —															
Jan.	266.8	271.8	269.7	32.8	30.4	31.0	299.6	302.2	300.7	10.9	10.1	10.3	50.9	51.3	51.1
Feb.	271.7	271.1	269.7	34.9	30.4	30.2	306.6	301.5	299.8	11.4	10.1	10.1	52.0	51.2	50.9
Mar.	272.1	268.8	270.0	31.1	29.8	29.2	303.2	298.6	299.3	10.3	10.0	9.8	51.4	50.7	50.8
Apr.	270.0	268.8	270.9	28.9	28.5	28.3	298.9	297.4	299.2	9.7	9.6	9.5	50.7	50.4	50.7
May	271.3	270.8	271.9	26.1	26.4	27.6	297.4	297.2	299.5	8.8	8.9	9.2	50.4	50.4	50.8
June	273.9	272.9	272.8	25.3	27.2	27.2	299.3	300.1	300.0	8.5	9.1	9.1	50.7	50.9	50.8
July	276.3	279.2	273.5	25.0	27.5	27.3	301.3	306.7	300.8	8.3	9.0	9.1	51.0	51.9	50.9
Aug.	269.9	271.6	273.9	26.0	27.6	27.8	295.9	299.2	301.7	8.8	9.2	9.2	50.1	50.6	51.1
Sept.	275.1	273.7	273.8	27.4	27.7	28.7	302.5	301.4	302.5	9.1	9.2	9.5	51.2	51.0	51.2
Oct.	269.7	270.8	273.6	29.8	30.5	29.5	299.5	301.3	303.0	10.0	10.1	9.7	50.7	51.0	51.3
Nov.	273.7	273.5	273.4	28.9	30.6	30.1	302.6	304.2	303.5	9.5	10.1	9.9	51.2	51.4	51.3
Dec.	279.0	276.4	273.4	31.8	30.8	30.5	310.9	307.2	303.8	10.2	10.0	10.0	52.5	51.9	51.3
1994 —															
Jan.	268.3	273.3	273.3	33.7	31.1	30.7	302.0	304.4	303.9	11.1	10.2	10.1	51.0	51.4	51.3
Feb.	272.3	271.6	273.5	33.6	29.3	30.7	305.9	300.9	304.2	11.0	9.7	10.1	51.6	50.8	51.3

TABLE A3 — CIVILIAN LABOUR FORCE: ORIGINAL, SEASONALLY ADJUSTED AND TREND SERIES
PERSONS, SOUTH AUSTRALIA

Month	Employed			Unemployed			Labour force			Unemployment rate			Participation rate		
	Original '000	Seasonally adjusted '000	Trend '000	Original '000	Seasonally adjusted '000	Trend '000	Original '000	Seasonally adjusted '000	Trend '000	Original per cent	Seasonally adjusted per cent	Trend per cent	Original per cent	Seasonally adjusted per cent	Trend per cent
1989 —															
Jan.	628.1	635.8	638.9	60.7	56.1	53.7	688.9	691.9	692.6	8.8	8.1	7.7	61.8	62.1	62.2
Feb.	639.7	640.1	641.0	59.7	54.5	53.2	699.3	694.2	693.3	8.5	7.8	7.7	62.7	62.3	62.2
Mar.	650.8	643.4	641.0	50.0	49.5	53.0	700.8	692.8	694.1	7.1	7.1	7.6	62.8	62.1	62.2
Apr.	648.8	644.4	642.5	50.4	51.1	52.8	699.1	695.5	695.2	7.2	7.3	7.6	62.6	62.3	62.2
May	644.3	642.7	644.6	54.4	55.4	52.1	698.7	698.0	696.7	7.8	7.9	7.5	62.5	62.4	62.3
June	643.5	643.4	647.2	48.8	51.4	51.3	692.3	694.9	698.5	7.0	7.4	7.3	61.9	62.1	62.4
July	642.6	646.7	649.5	51.3	53.1	50.4	693.9	699.9	699.9	7.4	7.6	7.2	62.0	62.5	62.5
Aug.	650.6	658.0	651.3	45.9	46.9	49.4	696.5	704.8	700.7	6.6	6.6	7.1	62.1	62.9	62.5
Sept.	657.0	656.9	652.2	46.0	45.3	48.6	703.0	702.2	700.8	6.5	6.5	6.9	62.7	62.6	62.5
Oct.	647.0	648.2	652.2	47.8	49.3	48.4	694.8	697.5	700.5	6.9	7.1	6.9	61.9	62.1	62.4
Nov.	650.8	650.5	651.3	48.6	51.8	48.6	699.5	702.4	699.9	7.0	7.4	6.9	62.2	62.5	62.2
Dec.	653.7	647.2	650.4	48.2	47.2	49.1	702.0	694.4	699.4	6.9	6.8	7.0	62.4	61.7	62.1
1990 —															
Jan.	646.1	653.4	650.1	52.3	48.4	49.4	698.4	701.8	699.5	7.5	6.9	7.1	62.0	62.3	62.1
Feb.	651.0	650.9	650.9	58.1	52.8	49.4	709.1	703.7	700.3	8.2	7.5	7.1	62.9	62.4	62.1
Mar.	657.5	650.5	652.6	48.7	48.2	49.3	706.1	698.7	701.9	6.9	6.9	7.0	62.6	61.9	62.2
Apr.	657.3	653.6	654.6	47.0	47.5	49.5	704.3	701.1	704.1	6.7	6.8	7.0	62.4	62.1	62.3
May	658.5	657.3	656.2	51.2	52.0	50.4	709.7	709.4	706.6	7.2	7.3	7.1	62.8	62.8	62.5
June	658.2	658.0	657.3	48.1	50.8	52.0	706.3	708.8	709.2	6.8	7.2	7.3	62.4	62.6	62.7
July	656.0	660.3	657.7	49.5	51.4	53.9	705.5	711.7	711.6	7.0	7.2	7.6	62.3	62.8	62.8
Aug.	651.7	658.4	657.6	57.4	58.7	56.0	709.1	717.1	713.6	8.1	8.2	7.8	62.6	63.3	63.0
Sept.	652.5	651.7	657.2	60.1	59.5	58.0	712.6	711.2	715.2	8.4	8.4	8.1	62.8	62.7	63.0
Oct.	657.6	658.5	656.7	57.5	59.3	59.6	715.1	717.8	716.3	8.0	8.3	8.3	63.0	63.2	63.1
Nov.	654.1	654.0	656.1	56.8	60.2	61.0	710.9	714.3	717.2	8.0	8.4	8.5	62.5	62.8	63.1
Dec.	667.0	660.5	655.4	61.7	60.5	62.6	728.7	721.0	717.9	8.5	8.4	8.7	64.0	63.4	63.1
1991 —															
Jan.	645.6	652.4	654.6	72.5	66.7	64.1	718.1	719.1	718.7	10.1	9.3	8.9	63.1	63.2	63.1
Feb.	654.0	653.7	653.4	70.7	64.3	65.7	724.7	718.0	719.1	9.8	9.0	9.1	63.6	63.0	63.1
Mar.	654.5	648.0	651.5	67.4	67.0	67.3	721.9	715.0	718.7	9.3	9.4	9.4	63.3	62.7	63.0
Apr.	652.9	650.0	648.6	70.8	71.5	68.6	723.8	721.5	717.2	9.8	9.9	9.6	63.4	63.2	62.8
May	648.9	648.2	645.0	67.9	68.9	69.7	716.8	717.1	714.7	9.5	9.6	9.8	62.7	62.8	62.6
June	646.7	646.6	640.8	64.6	68.2	70.8	711.3	714.7	711.6	9.1	9.5	10.0	62.2	62.5	62.2
July	624.1	628.1	636.6	70.7	73.2	72.0	694.8	701.3	708.7	10.2	10.4	10.2	60.7	61.3	61.9
Aug.	626.5	632.5	633.1	72.0	73.8	73.4	698.5	706.3	706.5	10.3	10.5	10.4	61.0	61.7	61.7
Sept.	631.9	630.8	630.7	75.8	75.4	74.7	707.7	706.2	705.4	10.7	10.7	10.6	61.7	61.6	61.5
Oct.	629.1	629.9	629.5	72.9	75.1	76.0	702.0	705.0	705.5	10.4	10.7	10.8	61.2	61.4	61.5
Nov.	630.1	629.9	629.2	72.4	76.6	77.1	702.4	706.5	706.3	10.3	10.8	10.9	61.2	61.5	61.5
Dec.	635.3	629.2	629.1	81.8	80.1	78.0	717.1	709.4	707.0	11.4	11.3	11.0	62.4	61.7	61.5
1992 —															
Jan.	624.0	630.4	628.4	84.2	77.1	79.1	708.2	707.5	707.5	11.9	10.9	11.2	61.6	61.5	61.5
Feb.	625.7	625.3	627.3	89.4	81.3	80.7	715.1	706.6	708.0	12.5	11.5	11.4	62.1	61.4	61.5
Mar.	633.6	627.8	626.4	82.9	80.5	82.3	713.7	708.2	708.7	11.2	11.4	11.6	62.0	61.5	61.5
Apr.	628.1	626.0	625.7	80.2	83.6	83.9	711.0	709.6	709.6	11.7	11.8	11.8	61.7	61.6	61.6
May	624.3	623.9	625.7	86.0	87.1	84.9	710.3	711.0	710.6	12.1	12.2	11.9	61.6	61.7	61.6
June	625.4	624.8	626.5	83.2	87.8	85.2	708.6	712.6	711.7	11.7	12.3	12.0	61.5	61.8	61.7

TABLE A3 — CIVILIAN LABOUR FORCE : ORIGINAL, SEASONALLY ADJUSTED AND TREND SERIES
PERSONS, SOUTH AUSTRALIA—continued

Month	Employed			Unemployed			Labour force			Unemployment rate			Participation rate		
	Original '000	Seasonally adjusted '000	Trend '000	Original '000	Seasonally adjusted '000	Trend '000	Original '000	Seasonally adjusted '000	Trend '000	Original per cent	Seasonally adjusted per cent	Trend per cent	Original per cent	Seasonally adjusted per cent	Trend per cent
1992 —															
July	626.1	630.0	628.0	80.1	82.7	84.9	706.2	712.7	712.9	11.3	11.6	11.9	61.2	61.8	61.8
Aug.	622.5	628.3	629.5	82.4	84.7	84.5	704.9	713.0	713.9	11.7	11.9	11.8	61.1	61.8	61.9
Sept.	631.8	630.4	630.7	82.9	82.7	84.1	714.6	713.1	714.7	11.6	11.6	11.8	61.9	61.8	61.9
Oct.	634.3	635.2	631.4	79.6	81.9	83.8	714.0	717.0	715.2	11.2	11.4	11.7	61.8	62.1	61.9
Nov.	632.0	631.6	631.4	81.5	85.9	83.8	713.4	717.5	715.2	11.4	12.0	11.7	61.7	62.1	61.9
Dec.	633.7	627.6	631.0	87.2	85.5	83.7	720.9	713.1	714.6	12.1	12.0	11.7	62.4	61.7	61.8
1993 —															
Jan.	624.1	630.3	630.5	90.8	83.0	83.1	714.9	713.3	713.6	12.7	11.6	11.6	61.8	61.7	61.7
Feb.	634.5	634.0	630.6	87.6	79.5	82.0	722.1	713.5	712.6	12.1	11.1	11.5	62.4	61.7	61.6
Mar.	634.3	628.8	631.4	81.8	82.1	80.7	716.1	710.9	712.1	11.4	11.5	11.3	61.9	61.4	61.5
Apr.	631.0	629.3	632.9	79.9	80.4	79.0	710.9	709.8	711.9	11.2	11.3	11.1	61.4	61.3	61.5
May	638.0	637.6	634.6	74.6	75.5	77.4	712.6	713.1	711.9	10.5	10.6	10.9	61.5	61.6	61.5
June	636.0	634.9	635.6	73.9	78.0	76.1	709.9	712.9	711.7	10.4	10.9	10.7	61.2	61.5	61.4
July	635.8	639.9	636.1	72.7	75.3	75.4	708.5	715.2	711.5	10.3	10.5	10.6	61.1	61.7	61.4
Aug.	630.3	636.2	636.2	70.0	72.2	75.6	700.3	708.4	711.8	10.0	10.2	10.6	60.4	61.1	61.4
Sept.	635.8	634.5	636.0	74.8	74.8	76.5	710.5	709.4	712.5	10.5	10.6	10.7	61.2	61.1	61.4
Oct.	630.9	631.7	635.7	78.6	80.7	77.6	709.4	712.4	713.3	11.1	11.3	10.9	61.1	61.4	61.4
Nov.	636.4	636.0	635.6	76.4	80.3	78.5	712.8	716.3	714.2	10.7	11.2	11.0	61.4	61.7	61.5
Dec.	646.9	640.6	635.6	80.1	78.4	79.0	727.0	719.0	714.6	11.0	10.9	11.1	62.5	61.9	61.5
1994 —															
Jan.	629.6	635.8	635.3	87.8	80.3	79.1	717.4	716.1	714.4	12.2	11.2	11.1	61.7	61.6	61.4
Feb.	631.9	631.4	635.1	83.6	75.9	79.0	715.5	707.3	714.2	11.7	10.7	11.1	61.5	60.8	61.4

BALANCE OF SOUTH AUSTRALIA

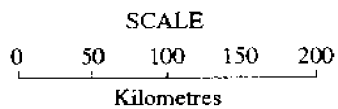
Northern and Western SA

Southern and Eastern SA

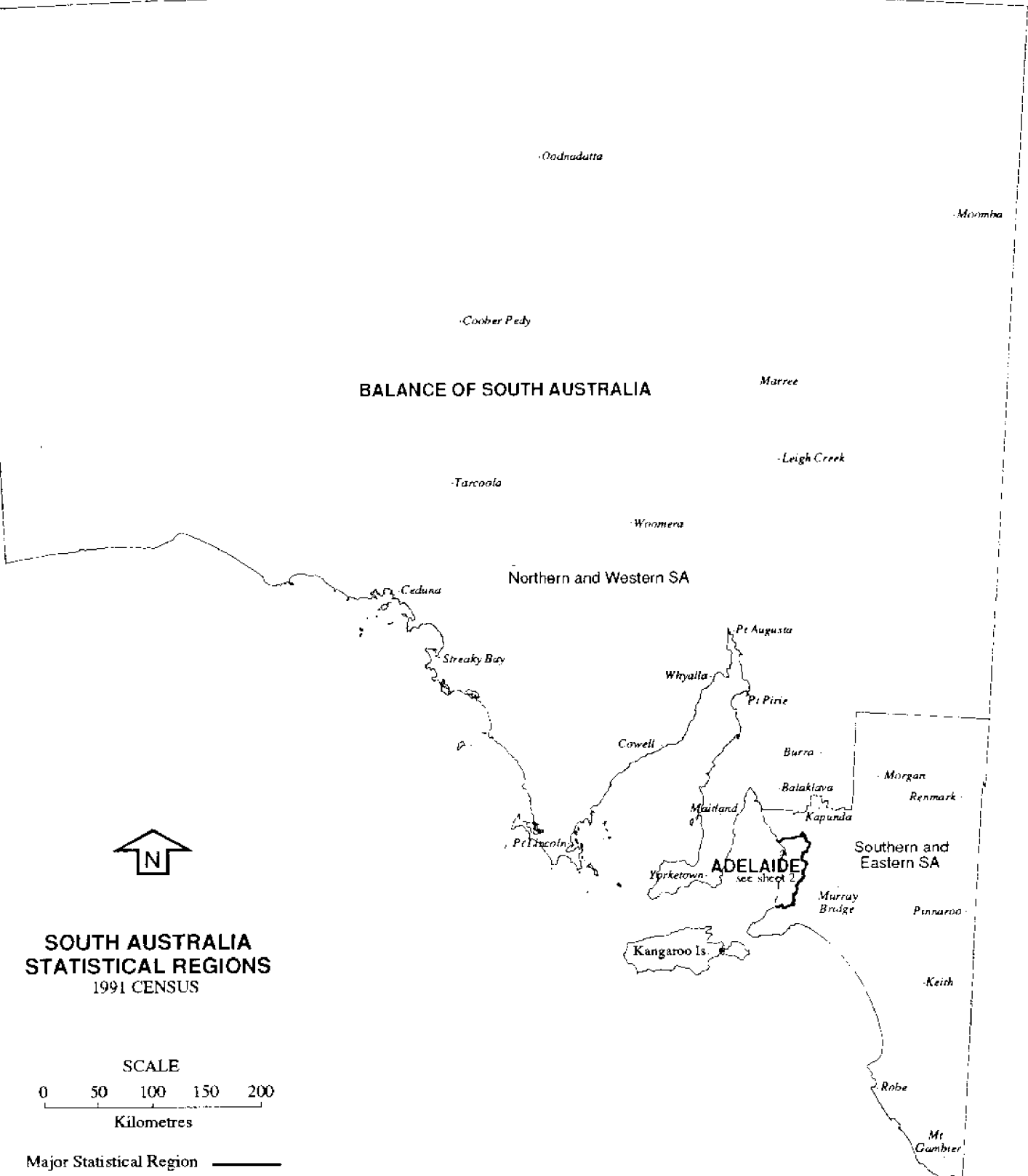
ADELAIDE
see sheet 2



SOUTH AUSTRALIA
STATISTICAL REGIONS
1991 CENSUS

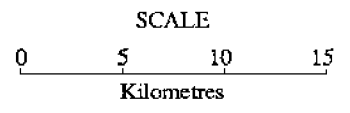


Major Statistical Region **—————**
Statistical Region **—————**





**ADELAIDE
STATISTICAL REGIONS
1991 CENSUS**



Major Statistical Region ———
 Statistical Region ———



1. 2. 3. 4. 5. 6. 7. 8. 9. 10. 11. 12. 13. 14. 15. 16. 17. 18. 19. 20. 21. 22. 23. 24. 25. 26. 27. 28. 29. 30. 31. 32. 33. 34. 35. 36. 37. 38. 39. 40. 41. 42. 43. 44. 45. 46. 47. 48. 49. 50. 51. 52. 53. 54. 55. 56. 57. 58. 59. 60. 61. 62. 63. 64. 65. 66. 67. 68. 69. 70. 71. 72. 73. 74. 75. 76. 77. 78. 79. 80. 81. 82. 83. 84. 85. 86. 87. 88. 89. 90. 91. 92. 93. 94. 95. 96. 97. 98. 99. 100.

1

1. 2. 3. 4. 5. 6. 7. 8. 9. 10. 11. 12. 13. 14. 15. 16. 17. 18. 19. 20. 21. 22. 23. 24. 25. 26. 27. 28. 29. 30. 31. 32. 33. 34. 35. 36. 37. 38. 39. 40. 41. 42. 43. 44. 45. 46. 47. 48. 49. 50. 51. 52. 53. 54. 55. 56. 57. 58. 59. 60. 61. 62. 63. 64. 65. 66. 67. 68. 69. 70. 71. 72. 73. 74. 75. 76. 77. 78. 79. 80. 81. 82. 83. 84. 85. 86. 87. 88. 89. 90. 91. 92. 93. 94. 95. 96. 97. 98. 99. 100.

1. 2. 3. 4. 5. 6. 7. 8. 9. 10. 11. 12. 13. 14. 15. 16. 17. 18. 19. 20. 21. 22. 23. 24. 25. 26. 27. 28. 29. 30. 31. 32. 33. 34. 35. 36. 37. 38. 39. 40. 41. 42. 43. 44. 45. 46. 47. 48. 49. 50. 51. 52. 53. 54. 55. 56. 57. 58. 59. 60. 61. 62. 63. 64. 65. 66. 67. 68. 69. 70. 71. 72. 73. 74. 75. 76. 77. 78. 79. 80. 81. 82. 83. 84. 85. 86. 87. 88. 89. 90. 91. 92. 93. 94. 95. 96. 97. 98. 99. 100.



For more information ...

The ABS publishes a wide range of information on Australia's economic and social conditions. A catalogue of publications and products is available from any of our Offices (see below for contact details).

Information Consultancy Service

Special tables or in-depth data investigations are provided by the ABS Information Consultancy Service in each of our Offices (see below for contact details).

Electronic Data Services

A growing range of our data is available on electronic media. Selections of the most frequently requested data are available, updated daily, on DISCOVERY (Key *656#). Our PC TELESTATS service delivers major economic indicator publications ready to download into your computer on the day of release. Our PC AUSSTATS service enables on-line access to a data base of thousands of up-to-date time series. Selected data sets are also available on diskette or CD-ROM. For more details on our electronic data services, contact Information Services in any of our Offices on the numbers below.

Bookshops and Subscriptions

There are over 500 titles available from the ABS Bookshops in each of our Offices. You can also receive any of our publications on a regular basis. Join our subscription mailing service and have your publications mailed to you in Australia at no additional cost. Telephone our Publications Subscription Service toll free on 008 02 33 08 Australia wide.

Sales and Inquiries

55 Currie Street, Adelaide



SYDNEY (02) 268 4611
MELBOURNE (03) 615 7000
BRISBANE (07) 222 6351
PERTH (09) 323 5140

ADELAIDE (08) 237 7100
HOBART (002) 20 5800
DARWIN (089) 43 2111
CANBERRA (06) 207 0326

NATIONAL OFFICE (CANBERRA) (06) 252 6007



Information Services, ABS, GPO Box 2272, ADELAIDE SA 5001
or any ABS Office.

